

138 Narrows West Road (Lot 4)



Legend

1: 2,500



Notes

127.0 0 63.5 127.0 Meters

NAD_1983_UTM_Zone_10N
© Capital Regional District

Important: This map is for general information purposes only. The Capital Regional District (CRD) makes no representations or warranties regarding the accuracy or completeness of this map or the suitability of the map for any purpose. This map is not for navigation. The CRD will not be liable for any damage, loss or injury resulting from the use of the map or information on the map and the map may be changed by the CRD at any time.

Contours



Legend

- Shoreline 1.6m
- 1m
- Hundred
- Twenty
- Ten
- Five
- Metre
- Bathymetry**
- 2
- 5
- 10
- 20
- 30
- 50
- 100
- 200

127.0 0 63.5 127.0 Meters

NAD_1983_UTM_Zone_10N
© Capital Regional District

Important: This map is for general information purposes only. The Capital Regional District (CRD) makes no representations or warranties regarding the accuracy or completeness of this map or the suitability of the map for any purpose. This map is not for navigation. The CRD will not be liable for any damage, loss or injury resulting from the use of the map or information on the map and the map may be changed by the CRD at any time.

1: 2,500



Notes

Zoning (R)



Legend

Zoning

1: 2,000



101.6 0 50.8 101.6 Meters

Important: This map is for general information purposes only. The Capital Regional District (CRD) makes no representations or warranties regarding the accuracy or completeness of this map or the suitability of the map for any purpose. This map is not for navigation. The CRD will not be liable for any damage, loss or injury resulting from the use of the map or information on the map and the map may be changed by the CRD at any time.

Notes

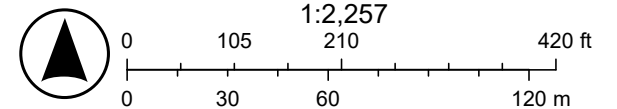
Islands Trust Map

Development Permit Areas



4/16/2026, 11:37:58 AM

- | | | |
|---|--|-----------------|
| Property Boundaries | DPA 6 - High Soil Erosion Area (Map 23) | Red: Band_1 |
| Civic Address | High Soil Erosion Hazard Area (Map13) | Green: Band_2 |
| DPA 3- Shoreline - On-land portion (Map 20) | DPA 6 - High Slope Stability Hazard Areas (Map 24) | Blue: Band_3 |
| Shoreline - Forshore | High Slope Stability Hazard Areas (Map 14) | World_Hillshade |
| DPA 4 - Lakes, Streams, Wetlands (Map 21) | DPA 7 - Riparian (Map28) | |



Sources: Esri, TomTom, Garmin, FAO, NOAA, USGS, © OpenStreetMap contributors, and the GIS User Community, Sources: Esri, Vantor, Airbus DS,

Geo Envelope



Legend

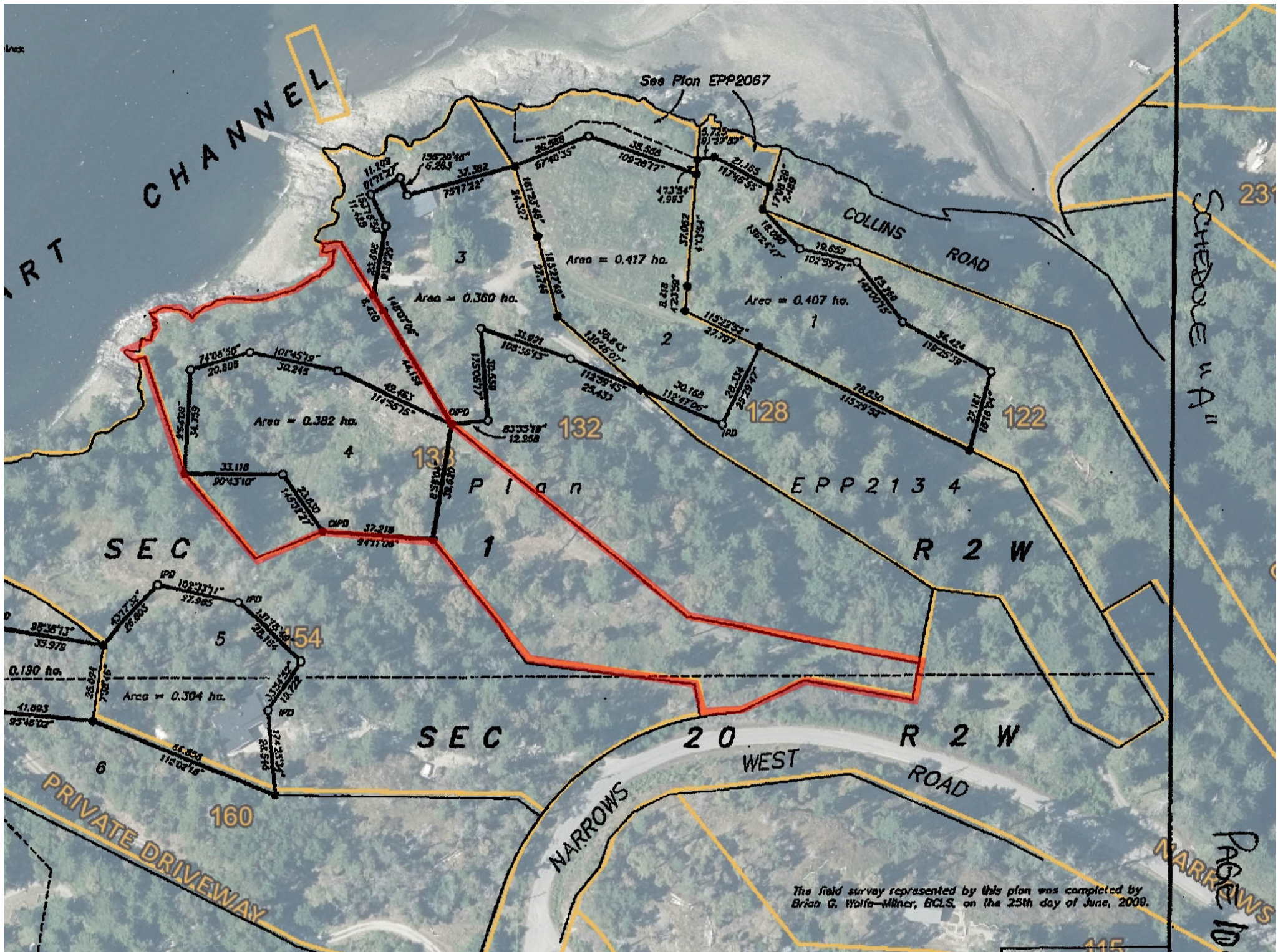
- Right of Way
- Covenant
- Lease or License
- Other
- Not Active
- Right of Way
- Covenant
- Lease or License
- Other
- Not Active
- Properties

Notes

127.0 0 63.5 127.0 Meters

NAD_1983_UTM_Zone_10N
© Capital Regional District

Important: This map is for general information purposes only. The Capital Regional District (CRD) makes no representations or warranties regarding the accuracy or completeness of this map or the suitability of the map for any purpose. This map is not for navigation. The CRD will not be liable for any damage, loss or injury resulting from the use of the map or information on the map and the map may be changed by the CRD at any time.



The field survey represented by this plan was completed by Brian G. Wolfe-Milner, BCLS, on the 23th day of June, 2009.

Page 10