





# 125 Horel Road - VIP51937 Composite Image

## LEGEND Operational Layers



114.7 0 57.3 114.7 Meters

WGS\_1984\_Web\_Mercator\_Auxiliary\_Sphere  
© Islands Trust



1:2,257

November 2, 2023

DISCLAIMER: This map is for general reference only. Data layers that appear on this map may or may not be accurate, current, or otherwise reliable. Islands Trust makes no representations of any kind, including but not limited to, the warranties of merchantability, or fitness for a particular use, nor are any such warranties to be implied with respect to the data on this map.

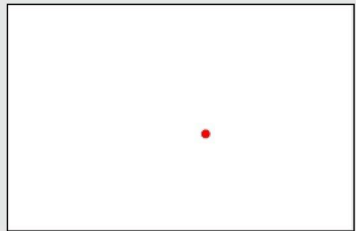
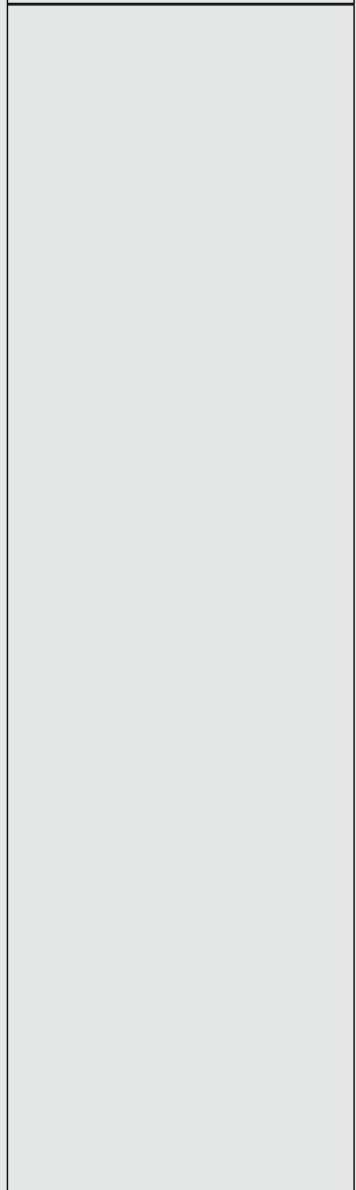
THIS MAP IS NOT TO BE USED FOR NAVIGATION





# 125 Horel Road - VIP77426 Composite Image

## LEGEND Operational Layers

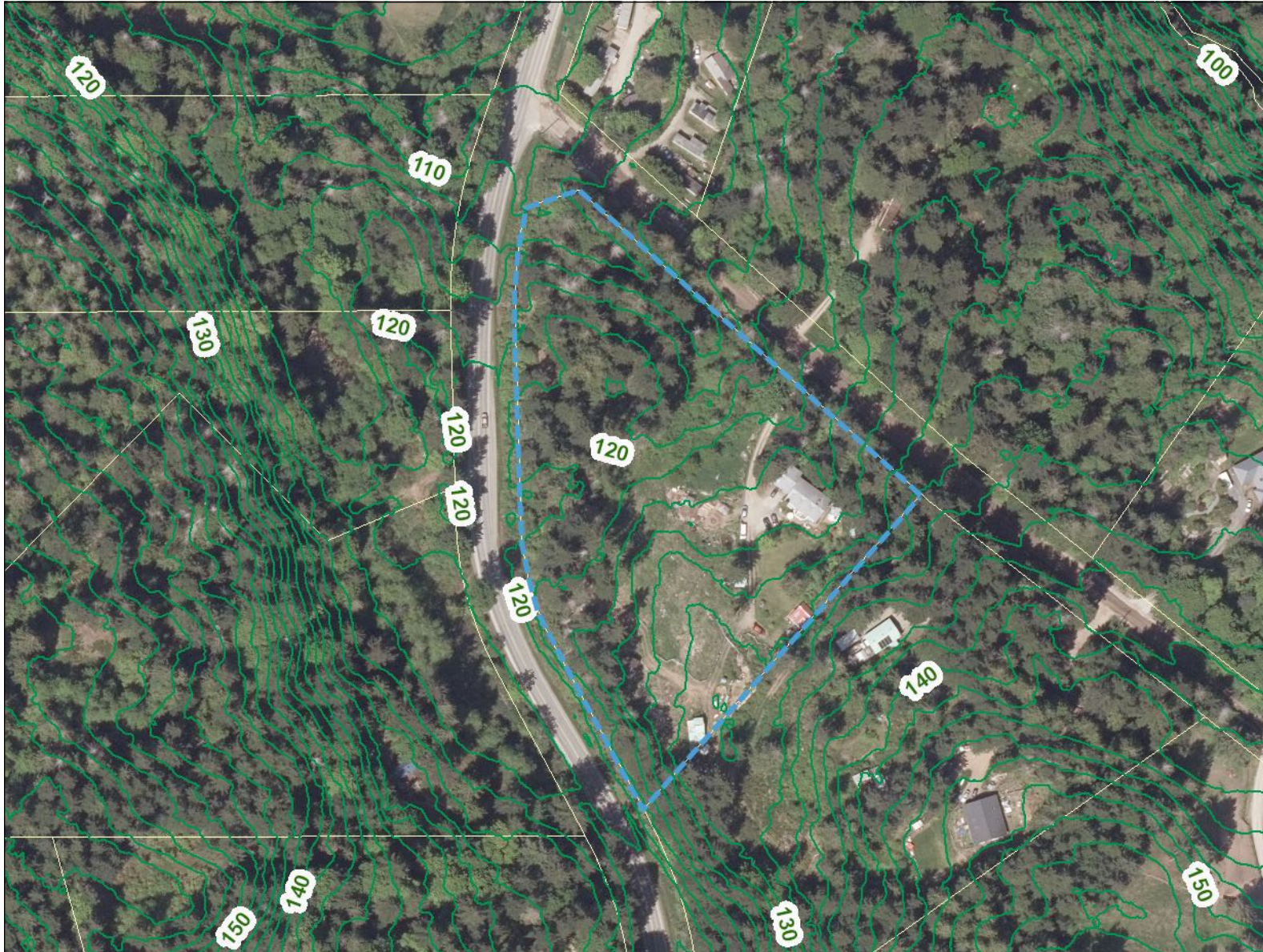




# 125 Horel Road - 2m Contours

## LEGEND Operational Layers

— Contours 2m



114.7                      0                      57.3                      114.7 Meters

WGS\_1984\_Web\_Mercator\_Auxiliary\_Sphere  
© Islands Trust



1:2,257

November 2, 2023

DISCLAIMER: This map is for general reference only. Data layers that appear on this map may or may not be accurate, current, or otherwise reliable. Islands Trust makes no representations of any kind, including but not limited to, the warranties of merchantability, or fitness for a particular use, nor are any such warranties to be implied with respect to the data on this map.

THIS MAP IS NOT TO BE USED FOR NAVIGATION





# 125 Horel Road - Zoning (RW1)

## LEGEND Operational Layers

Zoning



114.7 0 57.3 114.7 Meters

WGS\_1984\_Web\_Mercator\_Auxiliary\_Sphere  
© Islands Trust



1:2,257

November 2, 2023

DISCLAIMER: This map is for general reference only. Data layers that appear on this map may or may not be accurate, current, or otherwise reliable. Islands Trust makes no representations of any kind, including but not limited to, the warranties of merchantability, or fitness for a particular use, nor are any such warranties to be implied with respect to the data on this map.

THIS MAP IS NOT TO BE USED FOR NAVIGATION





