

PROPOSED SUBDIVISION PLAN OF LOT 2, SECTION 78, SOUTH SALT SPRING ISLAND, COWICHAN DISTRICT, PLAN 26270

BCGS 92B.083

THE INTENDED PLOT SIZE OF THIS PLAN IS 560mm IN WIDTH BY 432mm IN HEIGHT (C SIZE) WHEN PLOTTED AT A SCALE OF 1:1000
20m 0 20 40 60 80m

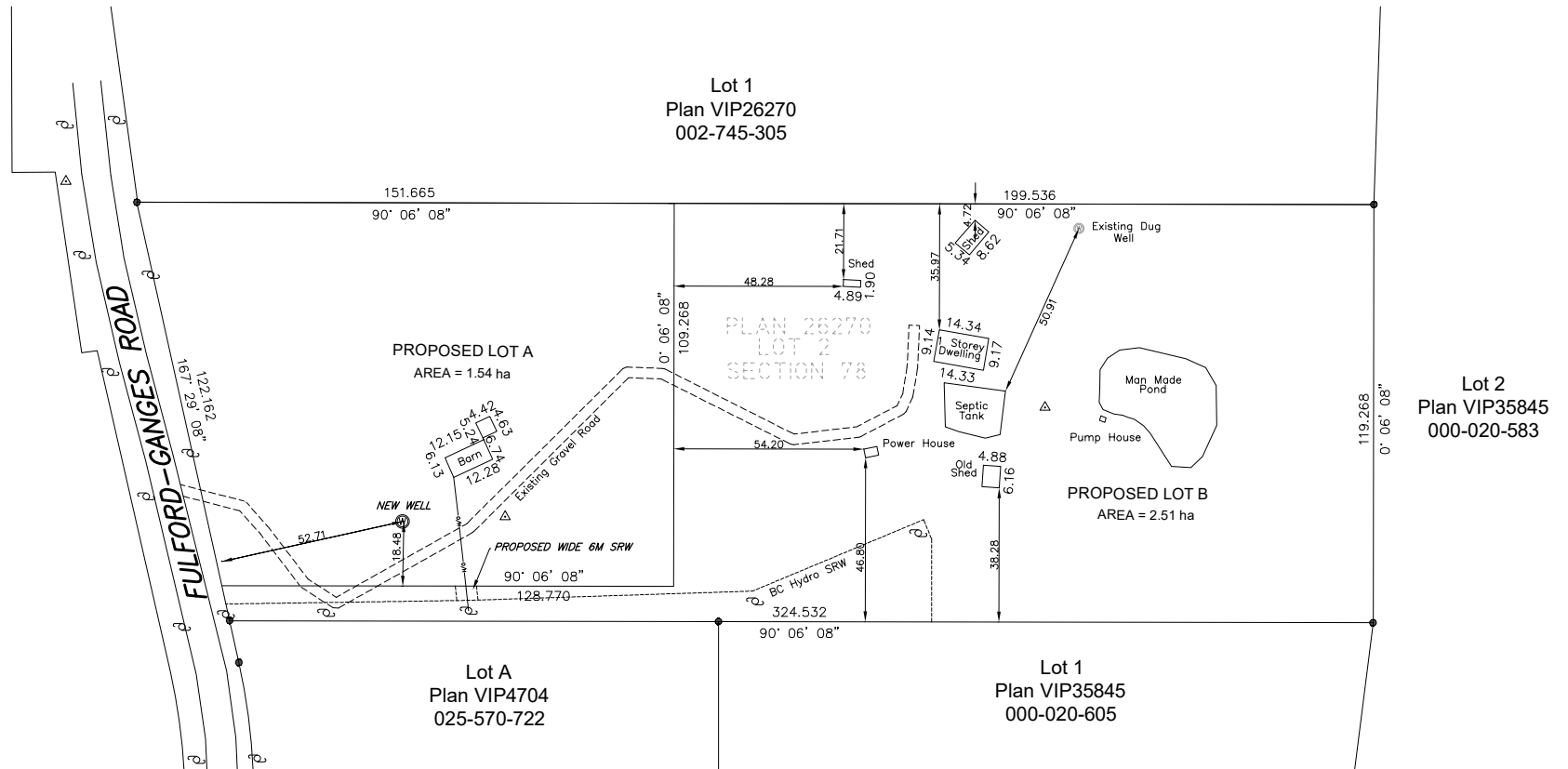
ALL DISTANCES ARE HORIZONTAL GROUND-LEVEL AND ARE SHOWN IN METRES AND DECIMALS THEREOF, UNLESS OTHERWISE INDICATED.

LEGEND

BEARINGS ARE GRID AND ARE DERIVED FROM
GNSS OBSERVATIONS TO CACS STATIONS PGC5 AND SC04
COORDINATES ARE UTM ZONE 10 NAD83(CSRS) HT2_1997

POWER POLE
GNSS CONTROL POINT
STANDARD IRON POST FOUND
OVERHEAD POWER LINE

CIVIC ADDRESS:
1281 FULFORD-GANGES ROAD
SALT SPRING ISLAND, BC
PID:
002-745-470



This sketch does not constitute a redefinition of the legal boundaries hereon described and is not to be used in any manner which would assume same.

© Copyright 2024, 3D Land Surveying Inc. All rights reserved. No person may copy, reproduce, transmit or alter this document in whole or in part without the consent of the signatory.

3D Land Surveying Inc. accepts no responsibility or liability for any damages that may be suffered by a third party as a result of any decision made, or actions taken based on this document.

THIS PLAN LIES WITHIN THE CAPITAL REGIONAL DISTRICT.

3D Geomatics
Land Surveying
3D LAND SURVEYING INC.
PROFESSIONAL LAND SURVEYORS
100-5279 RUTHERFORD ROAD
NANAIMO, BC V9T 5N9
T (250) 756-4500
FILE 21145 Proposed Subdivision