

**Cottage**

**Pump House**

**Barn**

**Garage / Office**

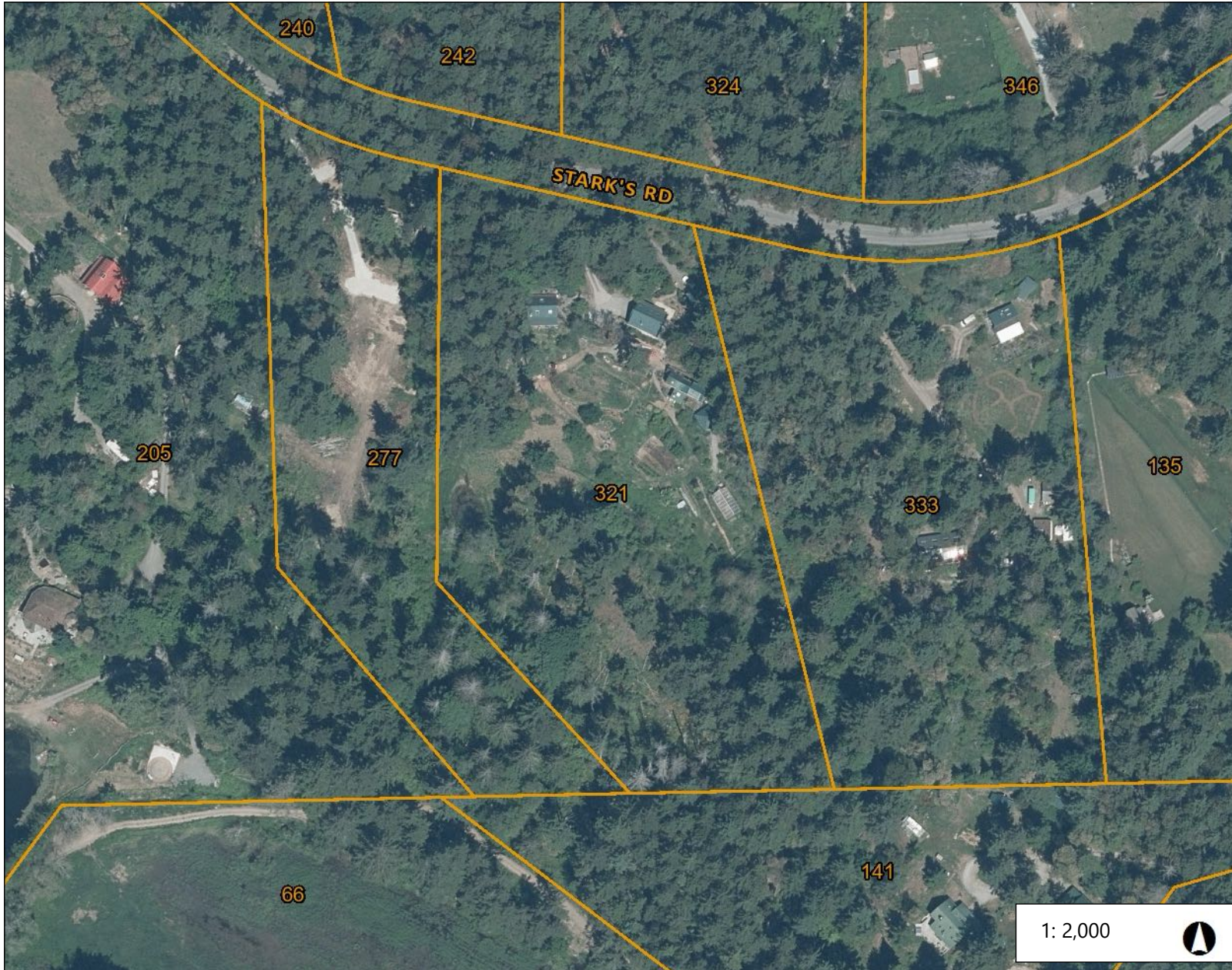
**Chicken  
Coop**

**House**

**Pergola**

**Pond**

**Green  
House**



Legend

Notes

101.6 0 50.8 101.6 Meters

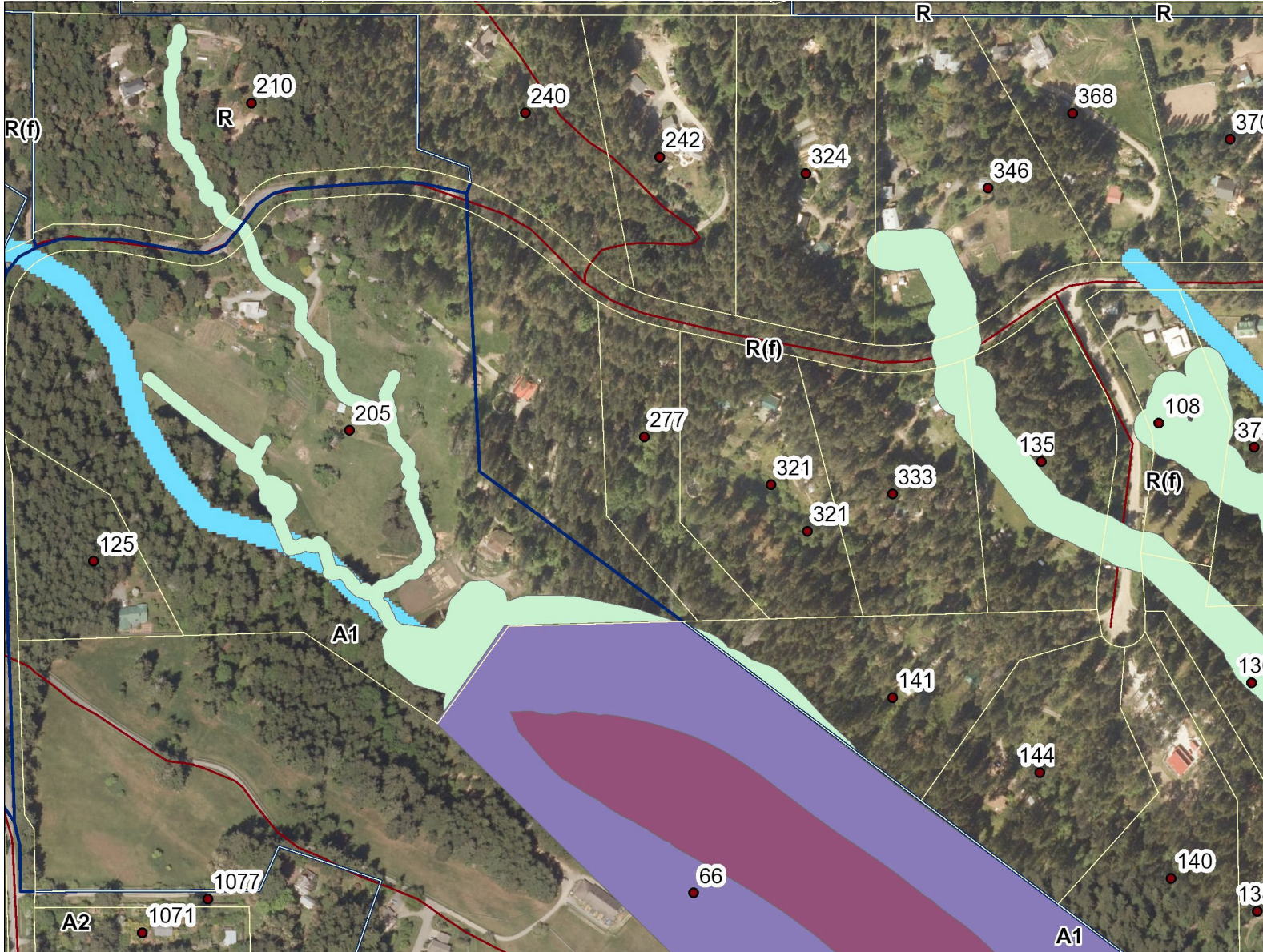
NAD\_1983\_UTM\_Zone\_10N  
© Capital Regional District

Important: This map is for general information purposes only. The Capital Regional District (CRD) makes no representations or warranties regarding the accuracy or completeness of this map or the suitability of the map for any purpose. This map is not for navigation. The CRD will not be liable for any damage, loss or injury resulting from the use of the map or information on the map and the map may be changed by the CRD at any time.

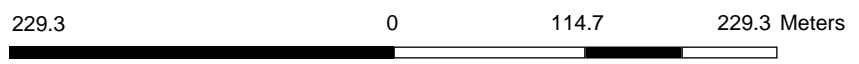


# Map Title

## LEGEND Operational Layers



- Civic Address
- Zoning
- Map13 - High Soil Erosion Ha
- Map14 - High Slope Stability
- Map23 - High Soil Erosion An
- Map24 - High Slope Instability
- Map28 - Riparian
- Non-Village Commercial & Ge
- Shoreline - Foreshore
- Shoreline - On-land portion
- Community Well Capture Zon
- Island Villages
- Metchosin Soils (Map23)
- Roads



WGS\_1984\_Web\_Mercator\_Auxiliary\_Sphere  
© Islands Trust

1:4,514

August 31, 2022

DISCLAIMER: This map is for general reference only. Data layers that appear on this map may or may not be accurate, current, or otherwise reliable. Islands Trust makes no representations of any kind, including but not limited to, the warranties of merchantability, or fitness for a particular use, nor are any such warranties to be implied with respect to the data on this map.

THIS MAP IS NOT TO BE USED FOR NAVIGATION

