

321 STARK'S ROAD

HOUSE UPPER LEVEL

ESTIMATED MEASUREMENTS

HOUSE LOWER = 820 SQ. FT.

HOUSE UPPER = 558 SQ. FT.

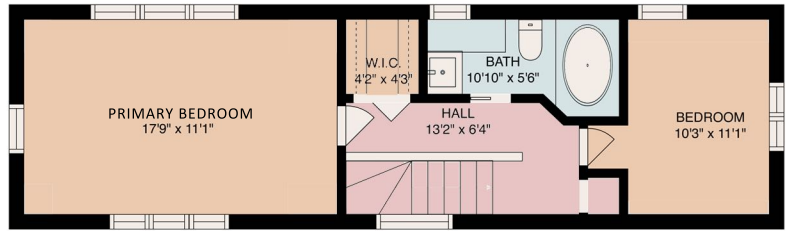
HOUSE TOTAL = 1,378 SQ. FT.

GARAGE LOWER = 950 SQ. FT.

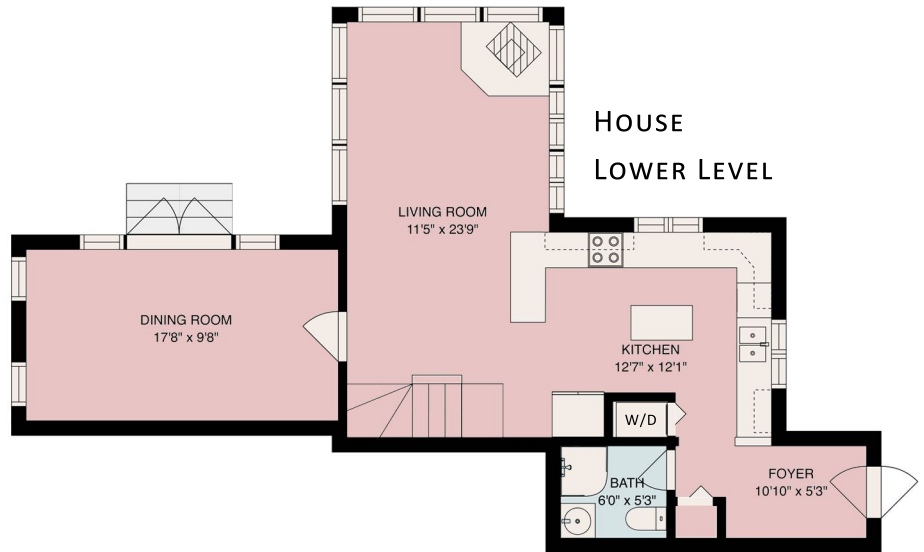
GARAGE UPPER = 900 SQ. FT.

GARAGE TOTAL = 1,850 SQ. FT.

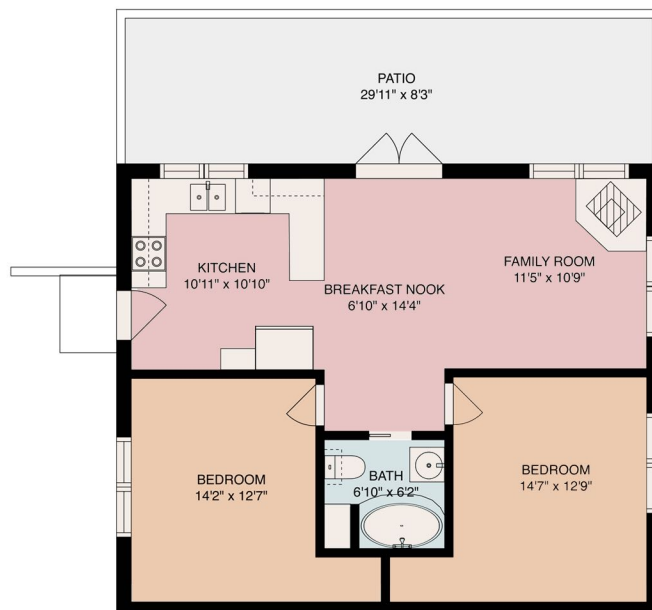
COTTAGE TOTAL = 798 SQ. FT.



HOUSE LOWER LEVEL



COTTAGE



* MEASUREMENTS ARE DEEMED HIGHLY ACCURATE BUT ARE NOT GUARANTEED

321 STARK'S ROAD

ESTIMATED MEASUREMENTS

HOUSE LOWER = 820 SQ. FT.

HOUSE UPPER = 558 SQ. FT.

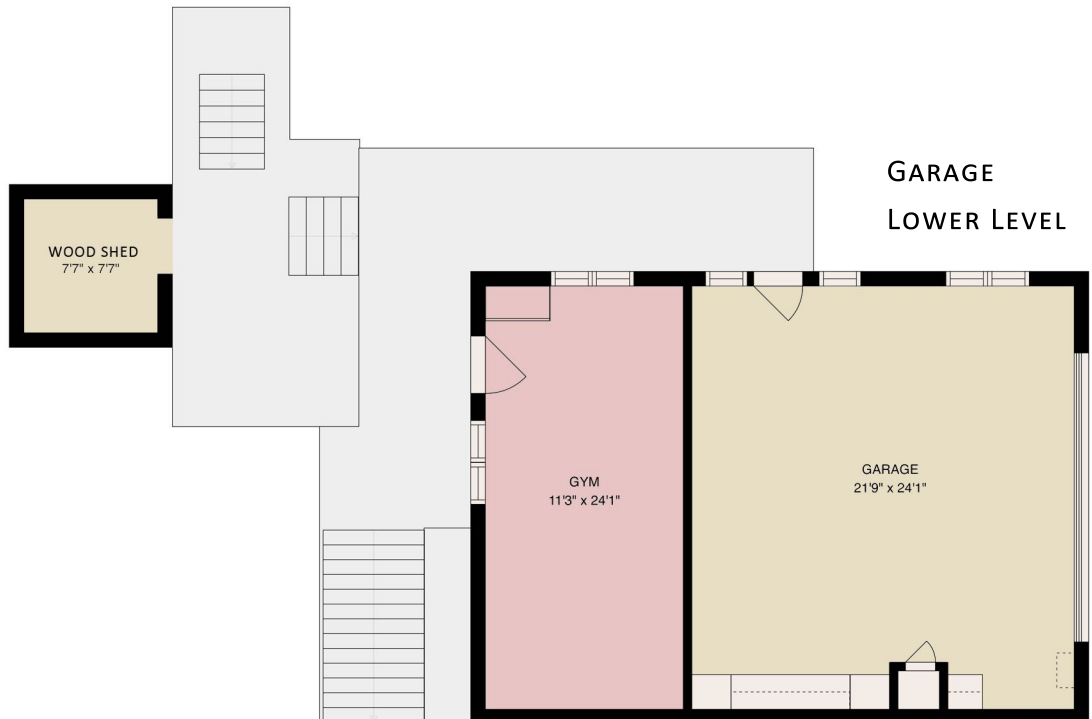
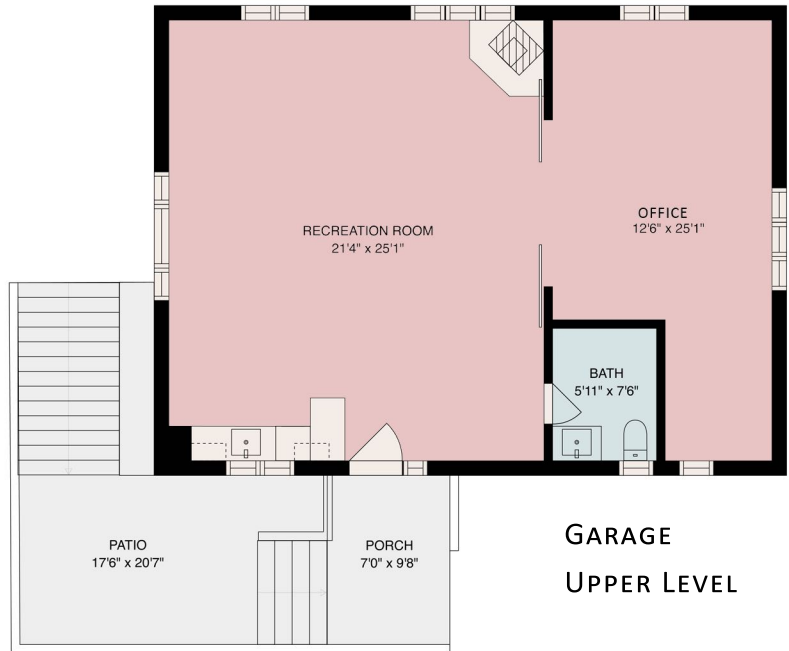
HOUSE TOTAL = 1,378 SQ. FT.

GARAGE LOWER = 950 SQ. FT.

GARAGE UPPER = 900 SQ. FT.

GARAGE TOTAL = 1,850 SQ. FT.

COTTAGE TOTAL = 798 SQ. FT.



JULIAN
BRUCE
REAL ESTATE

* MEASUREMENTS ARE DEEMED HIGHLY ACCURATE BUT ARE NOT GUARANTEED