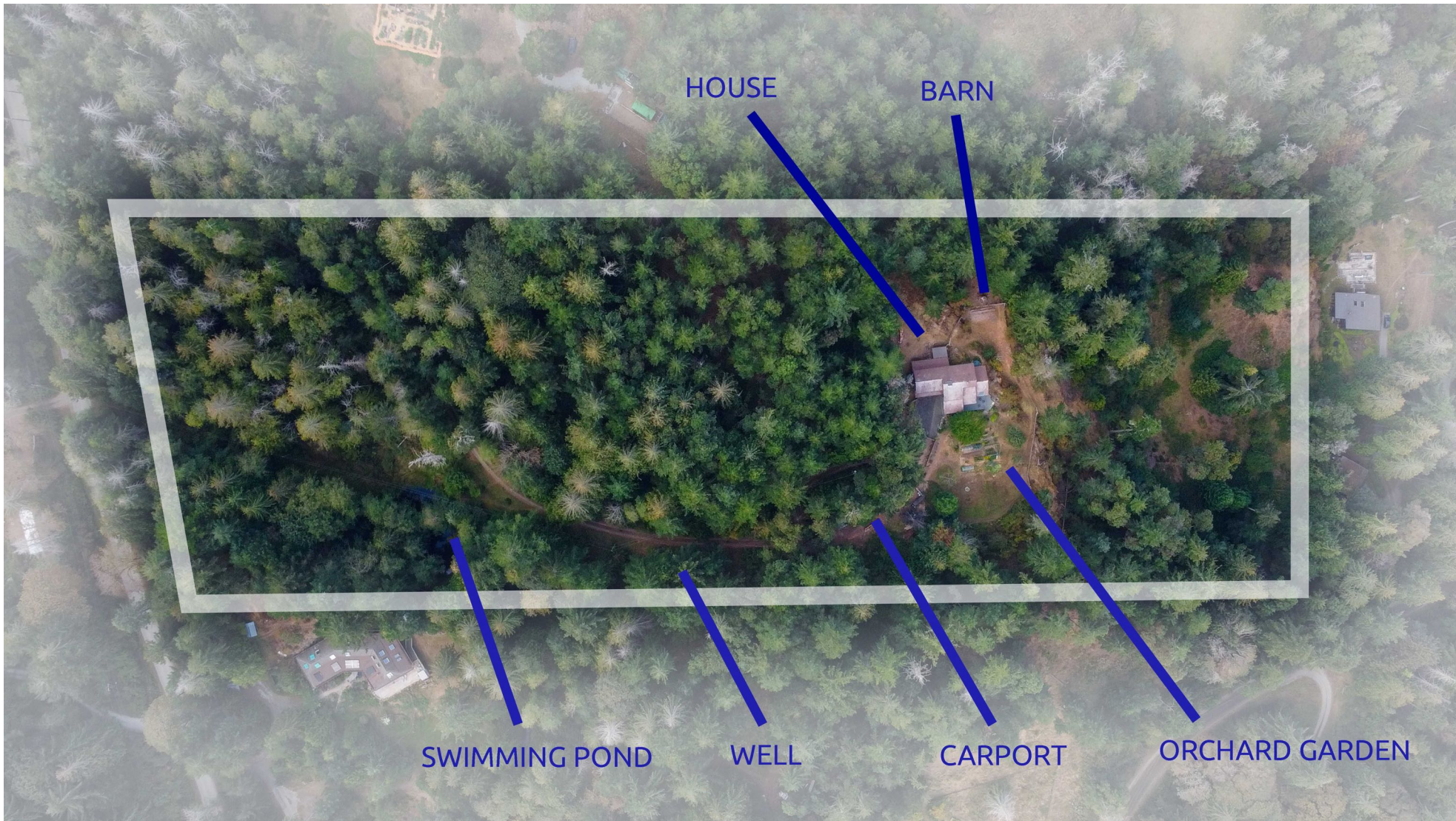


# 971 Isabella Point Road - AERIAL MAPS





# Map Title

## LEGEND Operational Layers

● Civic Address



114.7 0 57.3 114.7 Meters



WGS\_1984\_Web\_Mercator\_Auxiliary\_Sphere  
© Islands Trust



1:2,257

February 1, 2022

DISCLAIMER: This map is for general reference only. Data layers that appear on this map may or may not be accurate, current, or otherwise reliable. Islands Trust makes no representations of any kind, including but not limited to, the warranties of merchantability, or fitness for a particular use, nor are any such warranties to be implied with respect to the data on this map.

THIS MAP IS NOT TO BE USED FOR NAVIGATION





# Map Title

## LEGEND Operational Layers

Contours 2m  
 — Index Contour  
 — Intermediate Contour

- Agriculture Land Reserve
- PMFL
- Civic Address
- Zoning
- Map13 - High Soil Erosion Hazard
- Map14 - High Slope Stability
- Map23 - High Soil Erosion Area
- Map24 - High Slope Instability
- Map28 - Riparian
- Non-Village Commercial & General
- Shoreline - Foreshore
- Shoreline - On-land portion
- Community Well Capture Zone
- Island Villages
  
- Metchosin Soils (Map23)



114.7 0 57.3 114.7 Meters

WGS\_1984\_Web\_Mercator\_Auxiliary\_Sphere  
 © Islands Trust



1:2,257

February 1, 2022

**DISCLAIMER:** This map is for general reference only. Data layers that appear on this map may or may not be accurate, current, or otherwise reliable. Islands Trust makes no representations of any kind, including but not limited to, the warranties of merchantability, or fitness for a particular use, nor are any such warranties to be implied with respect to the data on this map.

**THIS MAP IS NOT TO BE USED FOR NAVIGATION**

