



Map Title

LEGEND Operational Layers

Road Names



114.7 0 57.3 114.7 Meters

WGS_1984_Web_Mercator_Auxiliary_Sphere
© Islands Trust



1:2,257

July 3, 2022

DISCLAIMER: This map is for general reference only. Data layers that appear on this map may or may not be accurate, current, or otherwise reliable. Islands Trust makes no representations of any kind, including but not limited to, the warranties of merchantability, or fitness for a particular use, nor are any such warranties to be implied with respect to the data on this map.

THIS MAP IS NOT TO BE USED FOR NAVIGATION





Map Title

LEGEND Operational Layers



Road Names

229.3 0 114.7 229.3 Meters

WGS_1984_Web_Mercator_Auxiliary_Sphere
© Islands Trust



1:4,514

July 3, 2022

DISCLAIMER: This map is for general reference only. Data layers that appear on this map may or may not be accurate, current, or otherwise reliable. Islands Trust makes no representations of any kind, including but not limited to, the warranties of merchantability, or fitness for a particular use, nor are any such warranties to be implied with respect to the data on this map.

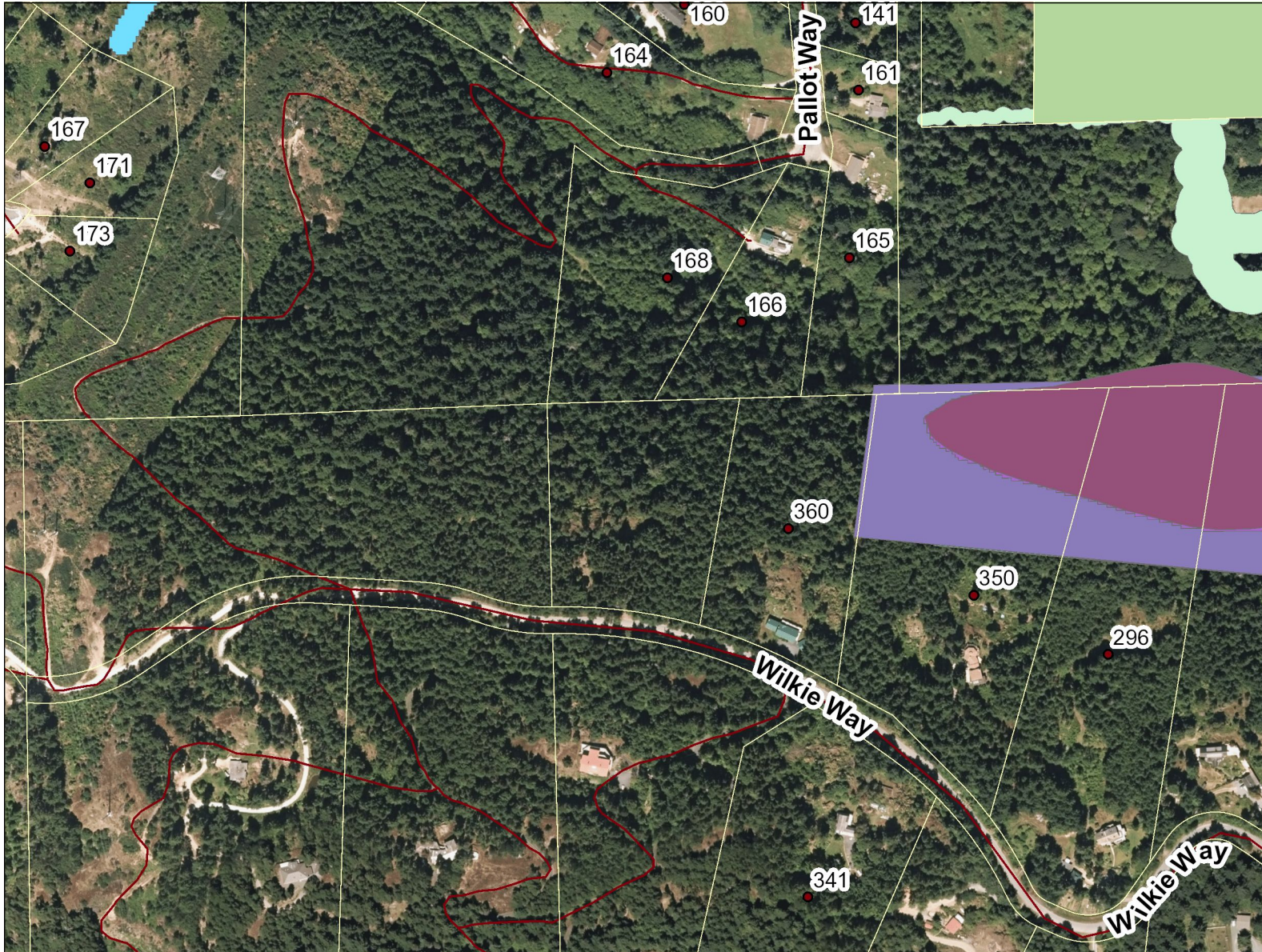
THIS MAP IS NOT TO BE USED FOR NAVIGATION





Map Title

LEGEND Operational Layers



- Agriculture Land Reserve
- PMFL
- Civic Address
- Map13 - High Soil Erosion Ha
- Map14 - High Slope Stability
- Map23 - High Soil Erosion Ar
- Map24 - High Slope Instability
- Map28 - Riparian
- Non-Village Commercial & G
- Shoreline - Foreshore
- Shoreline - On-land portion
- Community Well Capture Zon
- Island Villages

- Metchosin Soils (Map23)
- Roads
- Road Names

229.3 0 114.7 229.3 Meters

WGS_1984_Web_Mercator_Auxiliary_Sphere
© Islands Trust



1:4,514

July 3, 2022

DISCLAIMER: This map is for general reference only. Data layers that appear on this map may or may not be accurate, current, or otherwise reliable. Islands Trust makes no representations of any kind, including but not limited to, the warranties of merchantability, or fitness for a particular use, nor are any such warranties to be implied with respect to the data on this map.

THIS MAP IS NOT TO BE USED FOR NAVIGATION

