



140 Bonnet Avenue - Salt Spring Island

LEGEND Operational Layers

● Civic Address



57.3 0 28.7 57.3 Meters

WGS_1984_Web_Mercator_Auxiliary_Sphere
© Islands Trust



1:1,128

June 11, 2024

DISCLAIMER: This map is for general reference only. Data layers that appear on this map may or may not be accurate, current, or otherwise reliable. Islands Trust makes no representations of any kind, including but not limited to, the warranties of merchantability, or fitness for a particular use, nor are any such warranties to be implied with respect to the data on this map.

THIS MAP IS NOT TO BE USED FOR NAVIGATION





Proximity to Mouat Park and Ganges Village

LEGEND Operational Layers

Road Names



229.3 0 114.7 229.3 Meters

WGS_1984_Web_Mercator_Auxiliary_Sphere
© Islands Trust



1:4,514

June 11, 2024

DISCLAIMER: This map is for general reference only. Data layers that appear on this map may or may not be accurate, current, or otherwise reliable. Islands Trust makes no representations of any kind, including but not limited to, the warranties of merchantability, or fitness for a particular use, nor are any such warranties to be implied with respect to the data on this map.

THIS MAP IS NOT TO BE USED FOR NAVIGATION

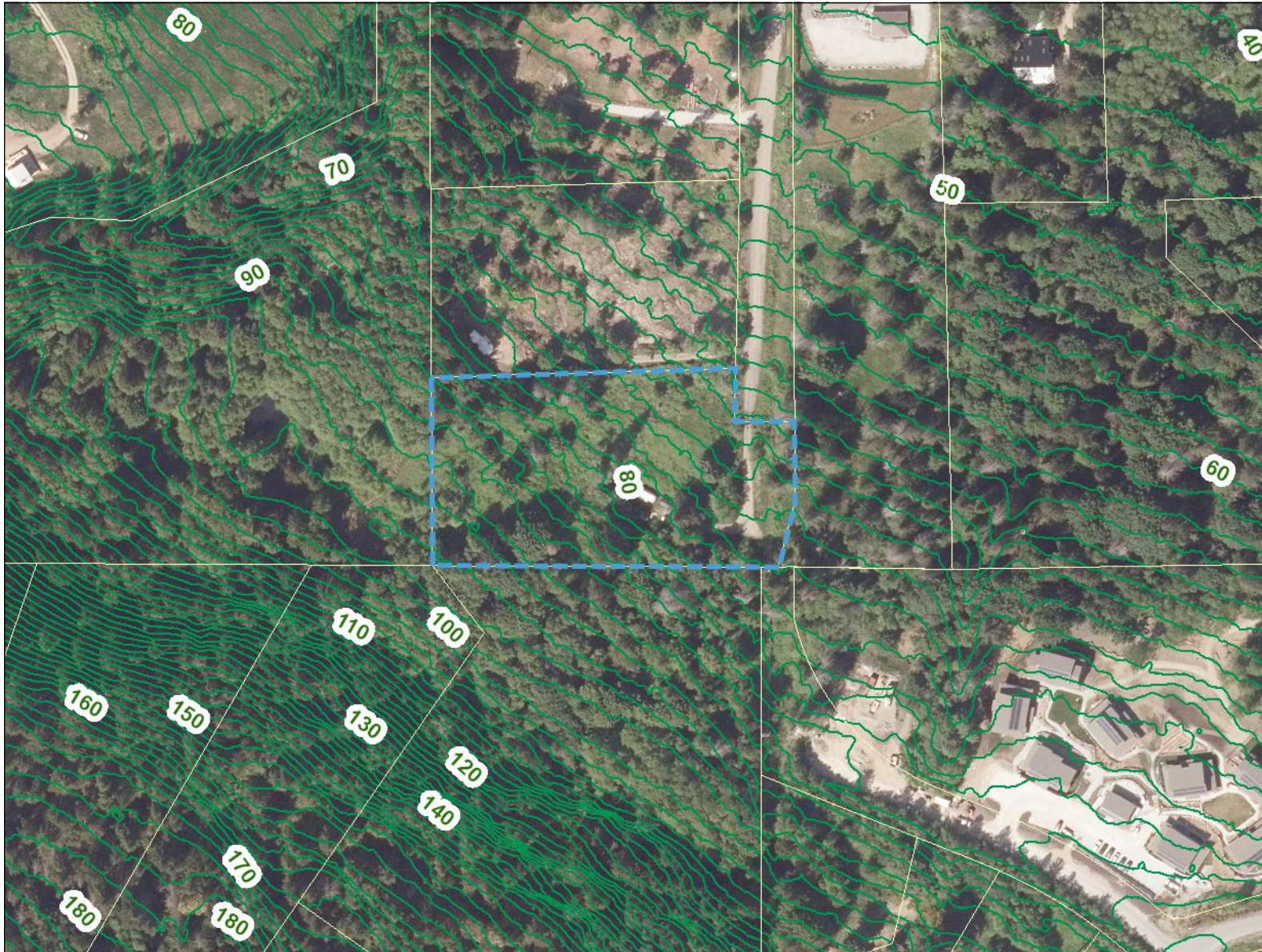




Contour Map - 2m

LEGEND Operational Layers

— Contours 2m



114.7 0 57.3 114.7 Meters

WGS_1984_Web_Mercator_Auxiliary_Sphere
© Islands Trust



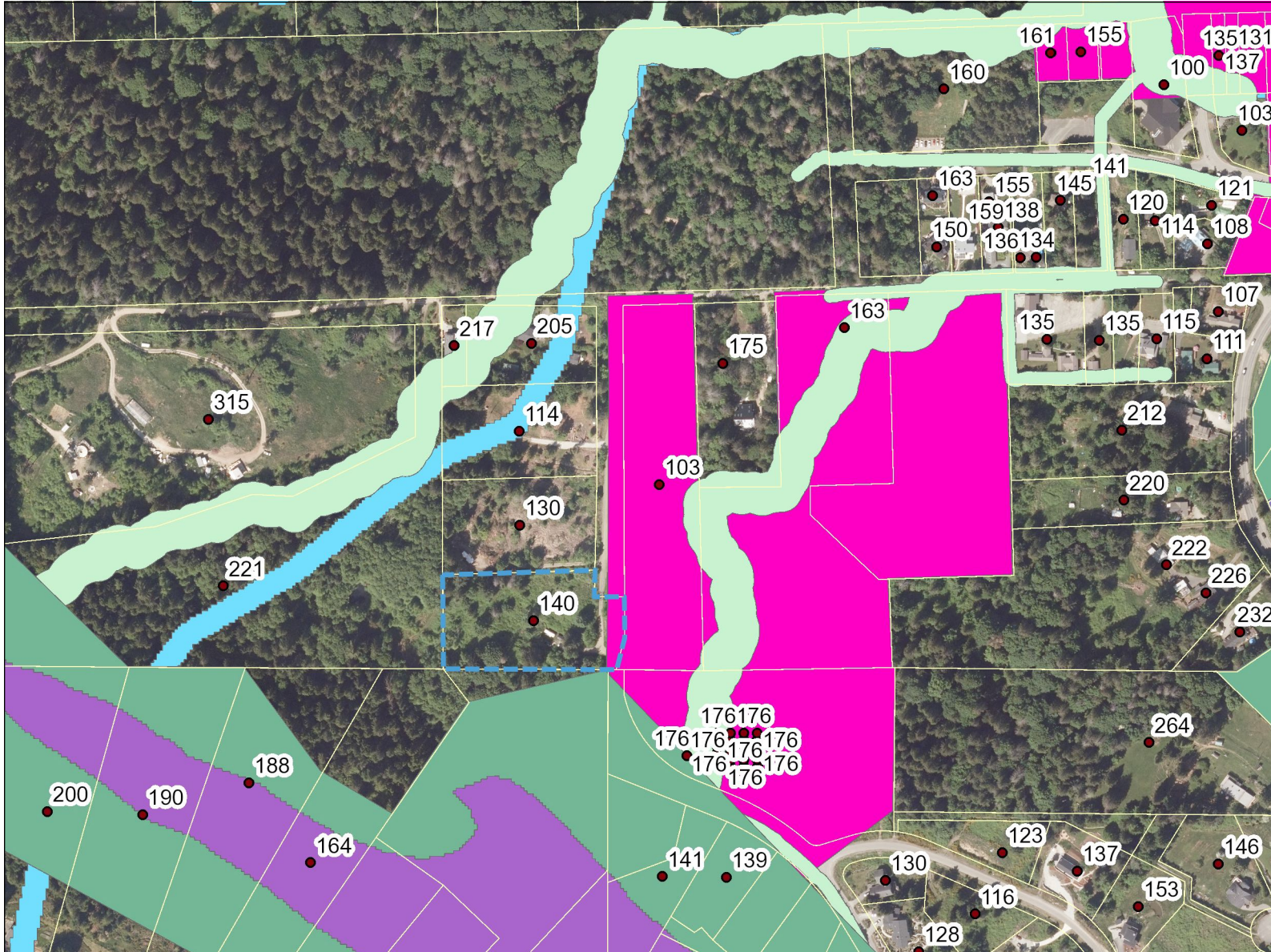
1:2,257

June 11, 2024

DISCLAIMER: This map is for general reference only. Data layers that appear on this map may or may not be accurate, current, or otherwise reliable. Islands Trust makes no representations of any kind, including but not limited to, the warranties of merchantability, or fitness for a particular use, nor are any such warranties to be implied with respect to the data on this map.

THIS MAP IS NOT TO BE USED FOR NAVIGATION





- Civic Address
- Map13 - High Soil Erosion Hazard
- Map14 - High Slope Stability
- Map23 - High Soil Erosion Area
- Map24 - High Slope Instability
- Map28 - Riparian
- Non-Village Commercial & General
- Shoreline - Foreshore
- Shoreline - On-land portion
- Community Well Capture Zone
- Island Villages
- Metchosin Soils (Map23)

229.3 0 114.7 229.3 Meters

WGS_1984_Web_Mercator_Auxiliary_Sphere
© Islands Trust



1:4,514

June 11, 2024

DISCLAIMER: This map is for general reference only. Data layers that appear on this map may or may not be accurate, current, or otherwise reliable. Islands Trust makes no representations of any kind, including but not limited to, the warranties of merchantability, or fitness for a particular use, nor are any such warranties to be implied with respect to the data on this map.

THIS MAP IS NOT TO BE USED FOR NAVIGATION



- Civic Address
- Zoning



114.7 0 57.3 114.7 Meters

WGS_1984_Web_Mercator_Auxiliary_Sphere
© Islands Trust



1:2,257

June 11, 2024

DISCLAIMER: This map is for general reference only. Data layers that appear on this map may or may not be accurate, current, or otherwise reliable. Islands Trust makes no representations of any kind, including but not limited to, the warranties of merchantability, or fitness for a particular use, nor are any such warranties to be implied with respect to the data on this map.



THIS MAP IS NOT TO BE USED FOR NAVIGATION

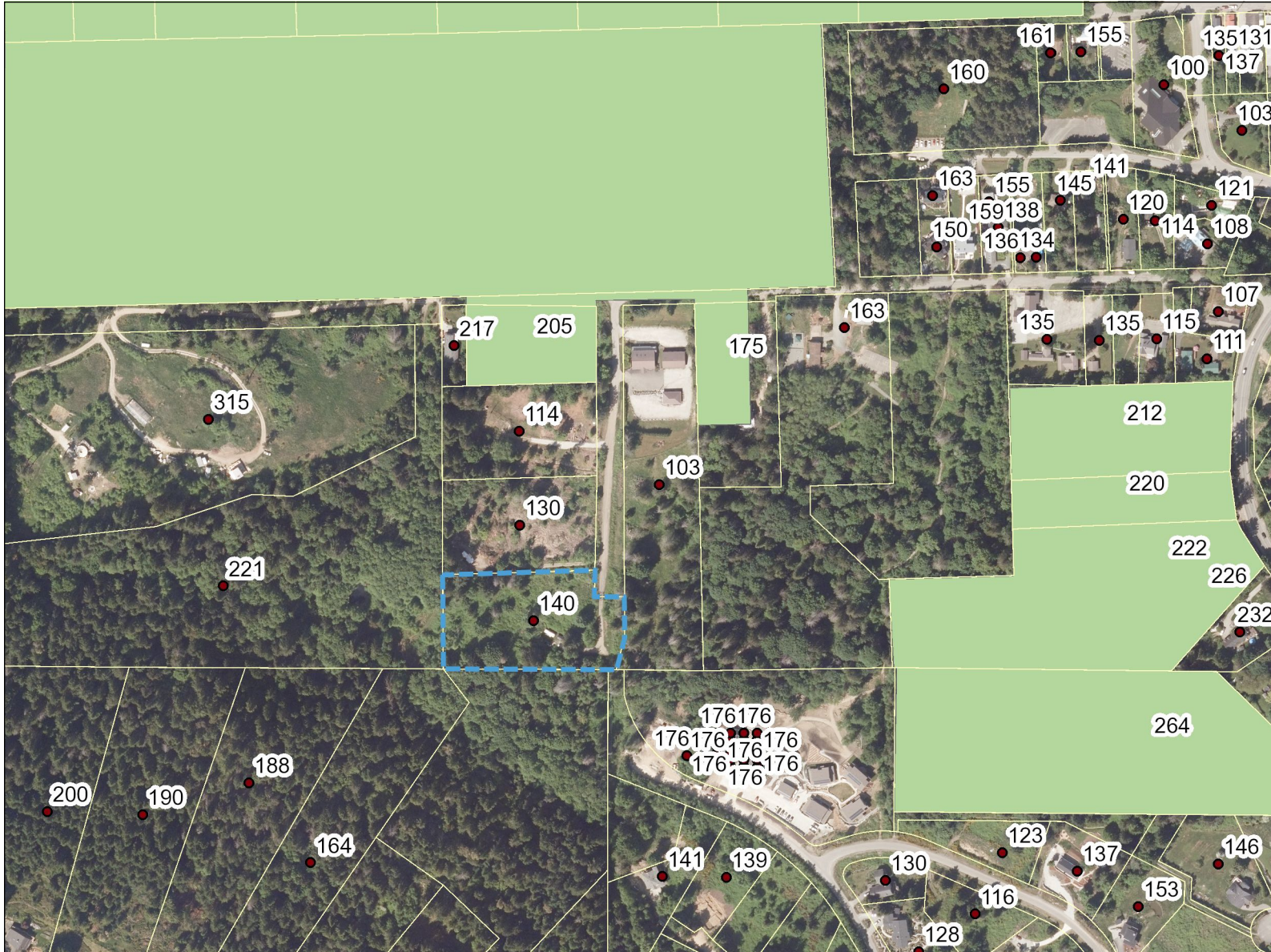




ALR

LEGEND
Operational Layers

-  Agriculture Land Reserve
-  Civic Address



229.3 0 114.7 229.3 Meters

WGS_1984_Web_Mercator_Auxiliary_Sphere
© Islands Trust



1:4,514

June 11, 2024

DISCLAIMER: This map is for general reference only. Data layers that appear on this map may or may not be accurate, current, or otherwise reliable. Islands Trust makes no representations of any kind, including but not limited to, the warranties of merchantability, or fitness for a particular use, nor are any such warranties to be implied with respect to the data on this map.

THIS MAP IS NOT TO BE USED FOR NAVIGATION

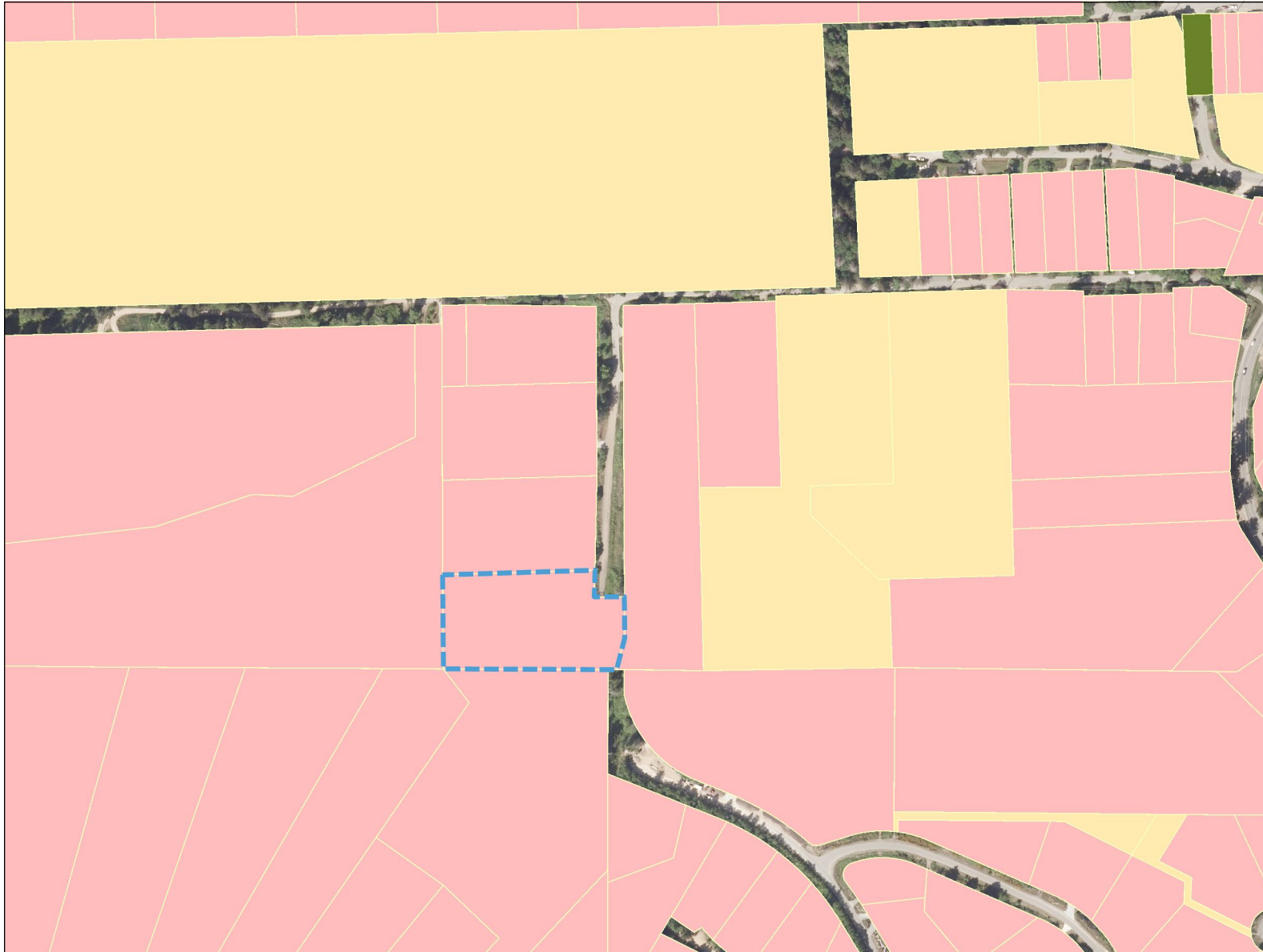




Ownership

LEGEND Operational Layers

- Land Owner Status
- CROWN AGENCY
 - CROWN PROVINCIAL
 - FEDERAL
 - FIRST NATION
 - MIXED OWNERSHIP
 - MUNICIPAL
 - NONE; UNKNOWN
 - PRIVATE



229.3 0 114.7 229.3 Meters

WGS_1984_Web_Mercator_Auxiliary_Sphere
© Islands Trust



1:4,514

June 11, 2024

DISCLAIMER: This map is for general reference only. Data layers that appear on this map may or may not be accurate, current, or otherwise reliable. Islands Trust makes no representations of any kind, including but not limited to, the warranties of merchantability, or fitness for a particular use, nor are any such warranties to be implied with respect to the data on this map.

THIS MAP IS NOT TO BE USED FOR NAVIGATION

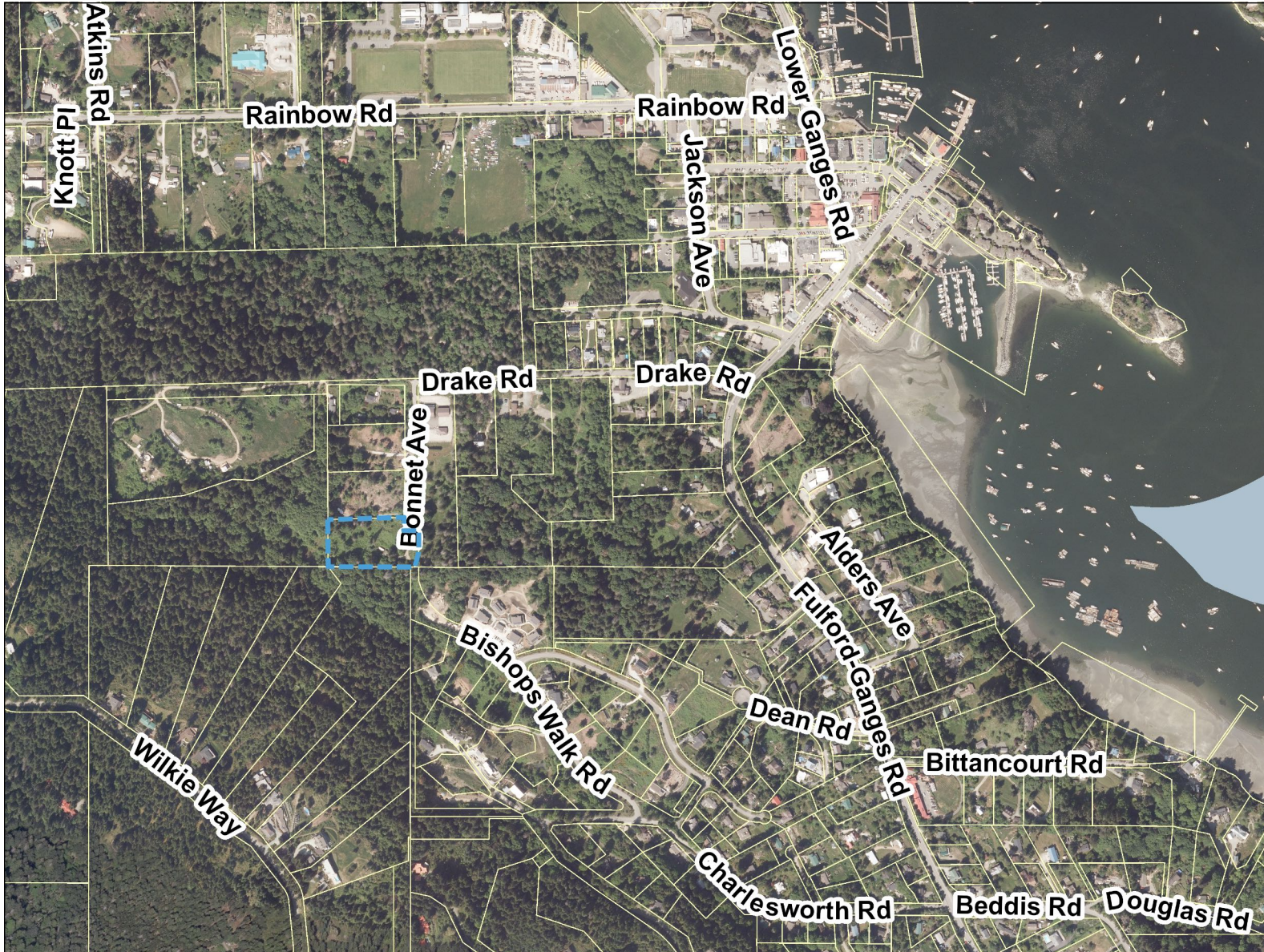




Map Title

LEGEND Operational Layers

Road Names



458.6 0 229.3 458.6 Meters

WGS_1984_Web_Mercator_Auxiliary_Sphere
© Islands Trust



1:9,028

June 11, 2024

DISCLAIMER: This map is for general reference only. Data layers that appear on this map may or may not be accurate, current, or otherwise reliable. Islands Trust makes no representations of any kind, including but not limited to, the warranties of merchantability, or fitness for a particular use, nor are any such warranties to be implied with respect to the data on this map.

THIS MAP IS NOT TO BE USED FOR NAVIGATION

