

MAP No

Deposited the day of 191

Signatures *L. G. Aldous*

PLAN

OF

SUBDIVISION OF PARTS OF NE 1/4 & SE 1/4 SEC. 86

SOUTH DIVISION

SALTSPRING ISLAND

COWICHAN DISTRICT

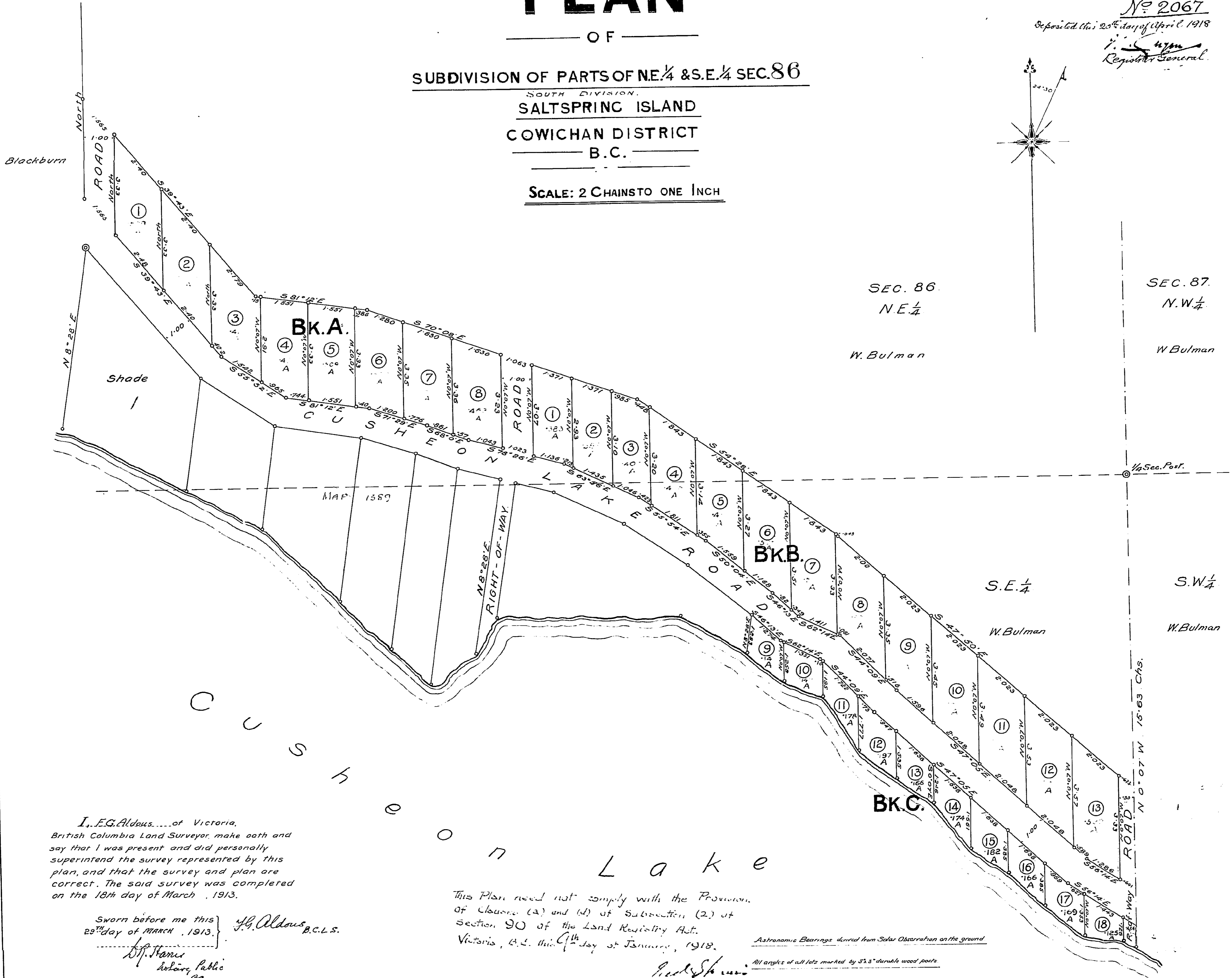
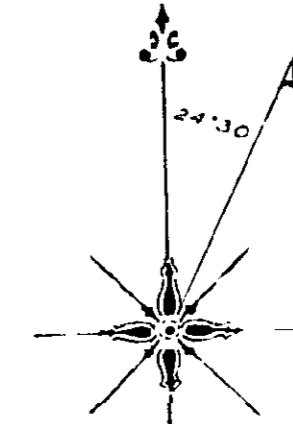
B.C.

SCALE: 2 CHAINS TO ONE INCH

No 2067

Deposited this 20th day of April 1918

L. G. Aldous
Registrar General



I., E.G. Aldous, of Victoria, British Columbia Land Surveyor, make oath and say that I was present and did personally superintend the survey represented by this plan, and that the survey and plan are correct. The said survey was completed on the 18th day of March, 1913.

Sworn before me this 23rd day of MARCH, 1913.
E. G. Aldous B.C.L.S.
H. H. Harris Notary Public

This Plan need not comply with the Provision of clauses (a) and (d) of Subsection (2) of section 90 of the Land Registry Act. Victoria, B.C. this 11th day of January, 1918.

John S. ...
Attorney-General

Astronomic Bearings derived from Solar Observation on the ground

All angles of all lots marked by 3x3" durable wood posts