

# 321 STARK'S ROAD

## ESTIMATED MEASUREMENTS

HOUSE LOWER = 900 SQ. FT.

HOUSE UPPER = 558 SQ. FT.

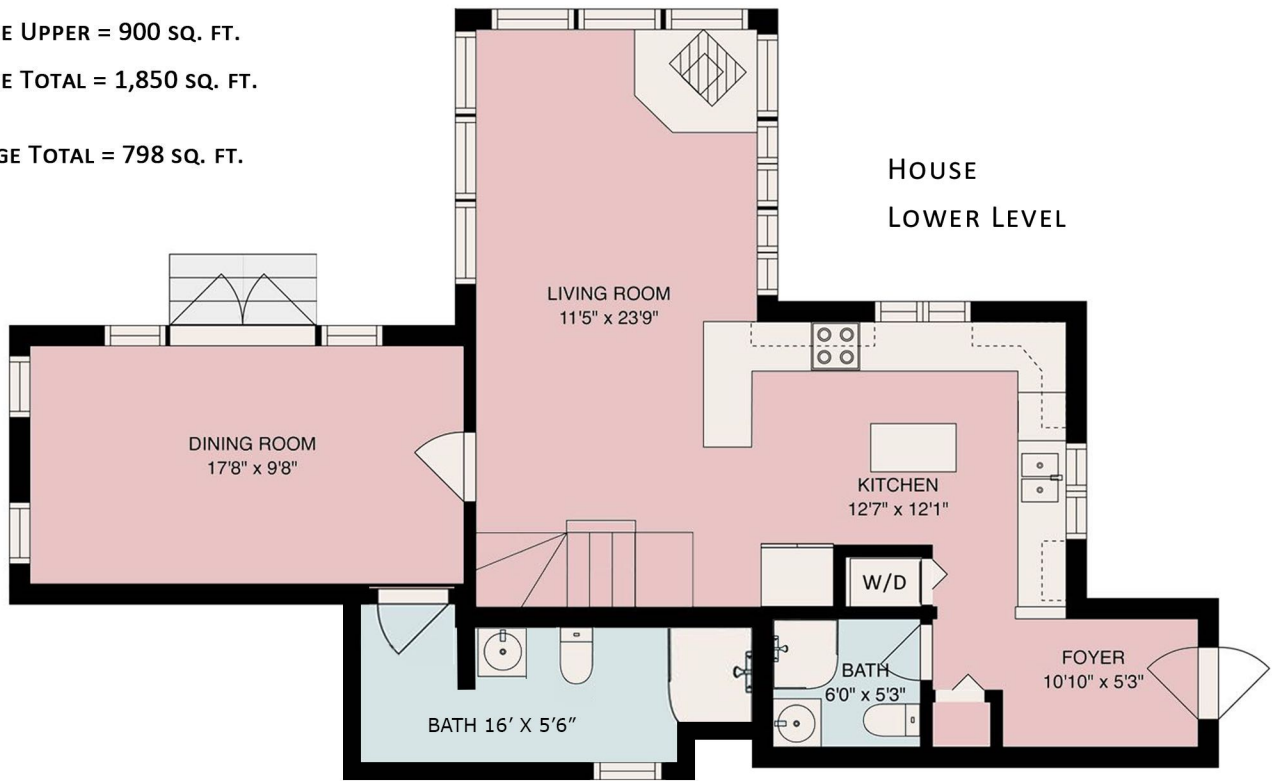
HOUSE TOTAL = 1,458 SQ. FT.

GARAGE LOWER = 950 SQ. FT.

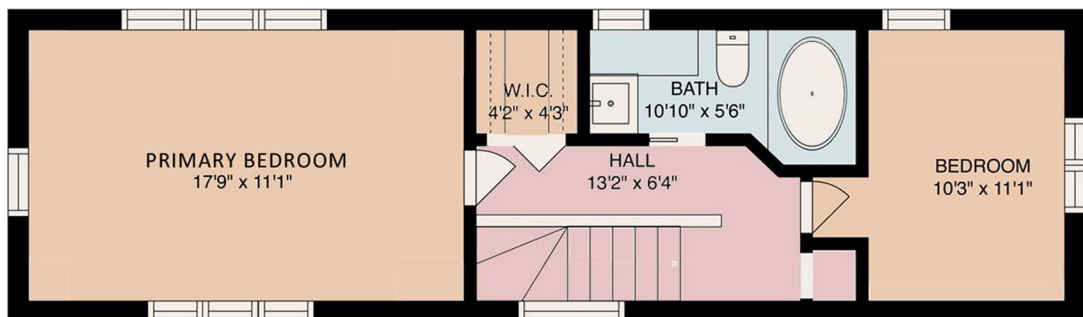
GARAGE UPPER = 900 SQ. FT.

GARAGE TOTAL = 1,850 SQ. FT.

COTTAGE TOTAL = 798 SQ. FT.



HOUSE  
LOWER LEVEL



HOUSE  
UPPER LEVEL



JULIAN  
BRUCE  
REAL ESTATE

# 321 STARK'S ROAD

## ESTIMATED MEASUREMENTS

HOUSE LOWER = 900 SQ. FT.

HOUSE UPPER = 558 SQ. FT.

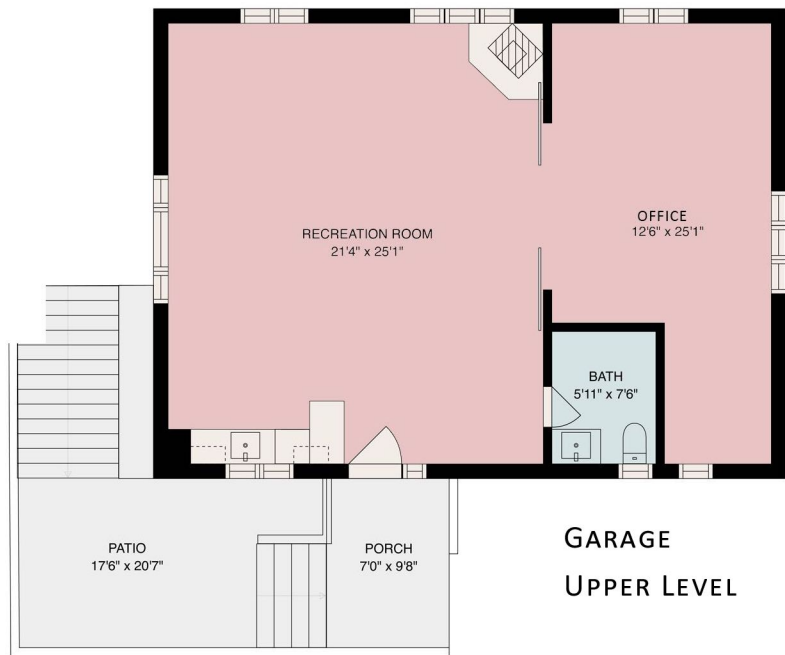
HOUSE TOTAL = 1,458 SQ. FT.

GARAGE LOWER = 950 SQ. FT.

GARAGE UPPER = 900 SQ. FT.

GARAGE TOTAL = 1,850 SQ. FT.

COTTAGE TOTAL = 798 SQ. FT.



JULIAN  
BRUCE  
REAL ESTATE

# 321 STARK'S ROAD

## ESTIMATED MEASUREMENTS

HOUSE LOWER = 900 SQ. FT.

HOUSE UPPER = 558 SQ. FT.

HOUSE TOTAL = 1,458 SQ. FT.

GARAGE LOWER = 950 SQ. FT.

GARAGE UPPER = 900 SQ. FT.

GARAGE TOTAL = 1,850 SQ. FT.

COTTAGE TOTAL = 798 SQ. FT.



COTTAGE

