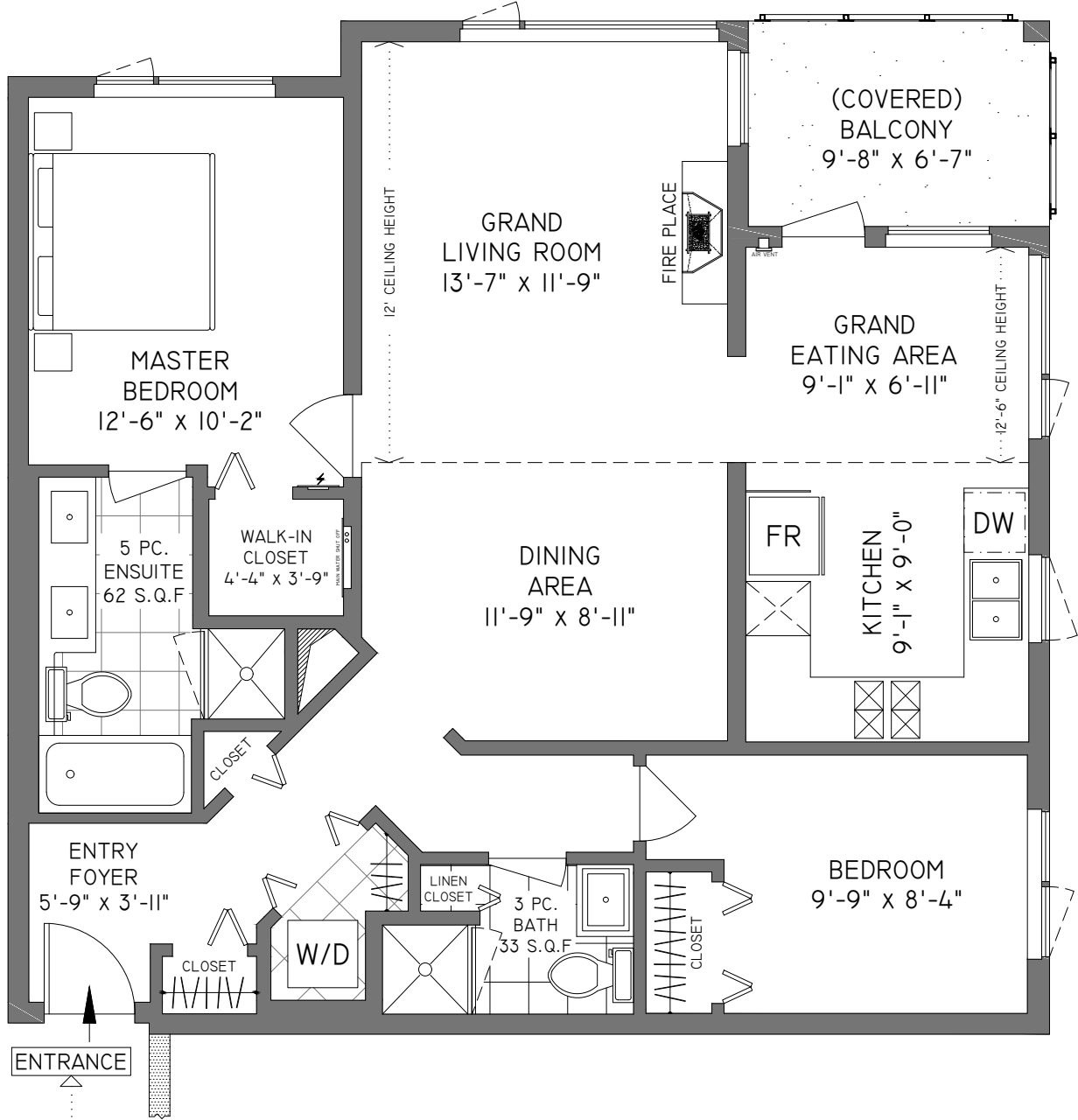




#406 - 119 W 22ND STREET
NORTH VANCOUVER
987 SQ. FT.

9'-0" - 12'-6" CEILING HEIGHTS



Booked on the Pixilink App™



Harcourts



THE REPRESENTED FLOOR PLANS ARE NOT SUITABLE FOR CONSTRUCTION/ARCHITECTURAL PURPOSES. EVERY EFFORT HAS BEEN MADE TO REPRESENT ALL DIMENSION ACCURATELY. E&O INSURED. FINAL SQUARE FOOTAGE MAY BE OBTAINED FROM STRATA PLAN.

FLOOR	AREA (SQ. FT.)	
	FINISHED	BALCONY
FOURTH	987	64