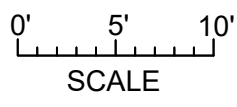




MAIN FLOOR
1630 SQ. FT.
 10' CEILING HEIGHT



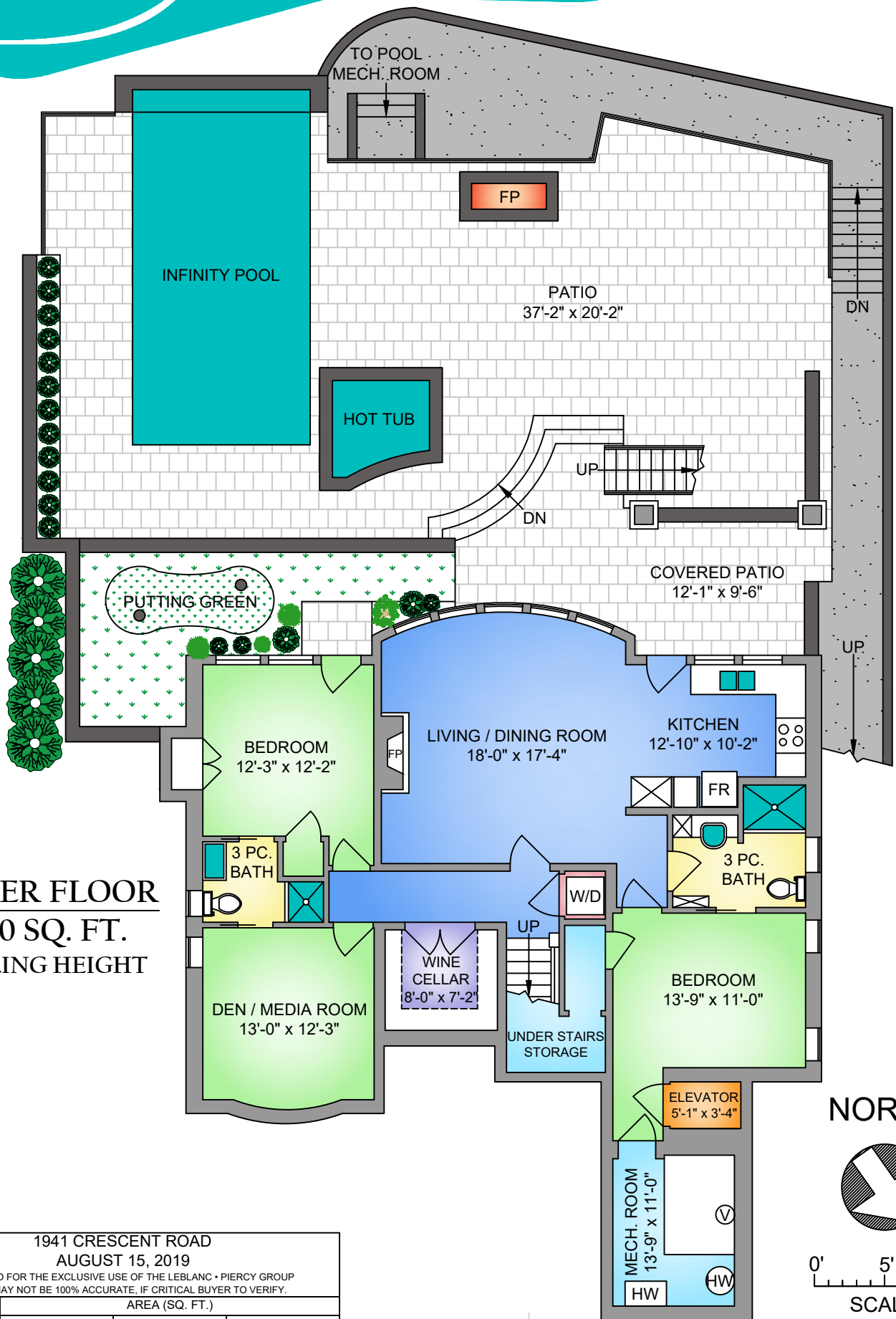
NORTH



| | | | |
|--|----------------|--------|-------|
| 1941 CRESCENT ROAD | | | |
| AUGUST 15, 2019 | | | |
| PREPARED FOR THE EXCLUSIVE USE OF THE LEBLANC - PIERCY GROUP | | | |
| PLANS MAY NOT BE 100% ACCURATE, IF CRITICAL BUYER TO VERIFY. | | | |
| FLOOR | AREA (SQ. FT.) | | |
| | FINISHED | GARAGE | PATIO |
| LOWER | 1640 | - | 1562 |
| MAIN | 1636 | 487 | 126 |
| UPPER | 1750 | - | - |
| TOTAL | 5026 | 487 | 1688 |

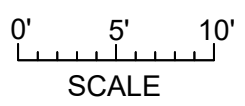
PROPERMEASURE
 FROM PRECISION TO PERFECTION
 propermeasure.com | 250.884.9753
 matt@propermeasure.com

ENGEL & VÖLKERS
LEBLANC · PIERCY GROUP



LOWER FLOOR
1640 SQ. FT.
8' CEILING HEIGHT

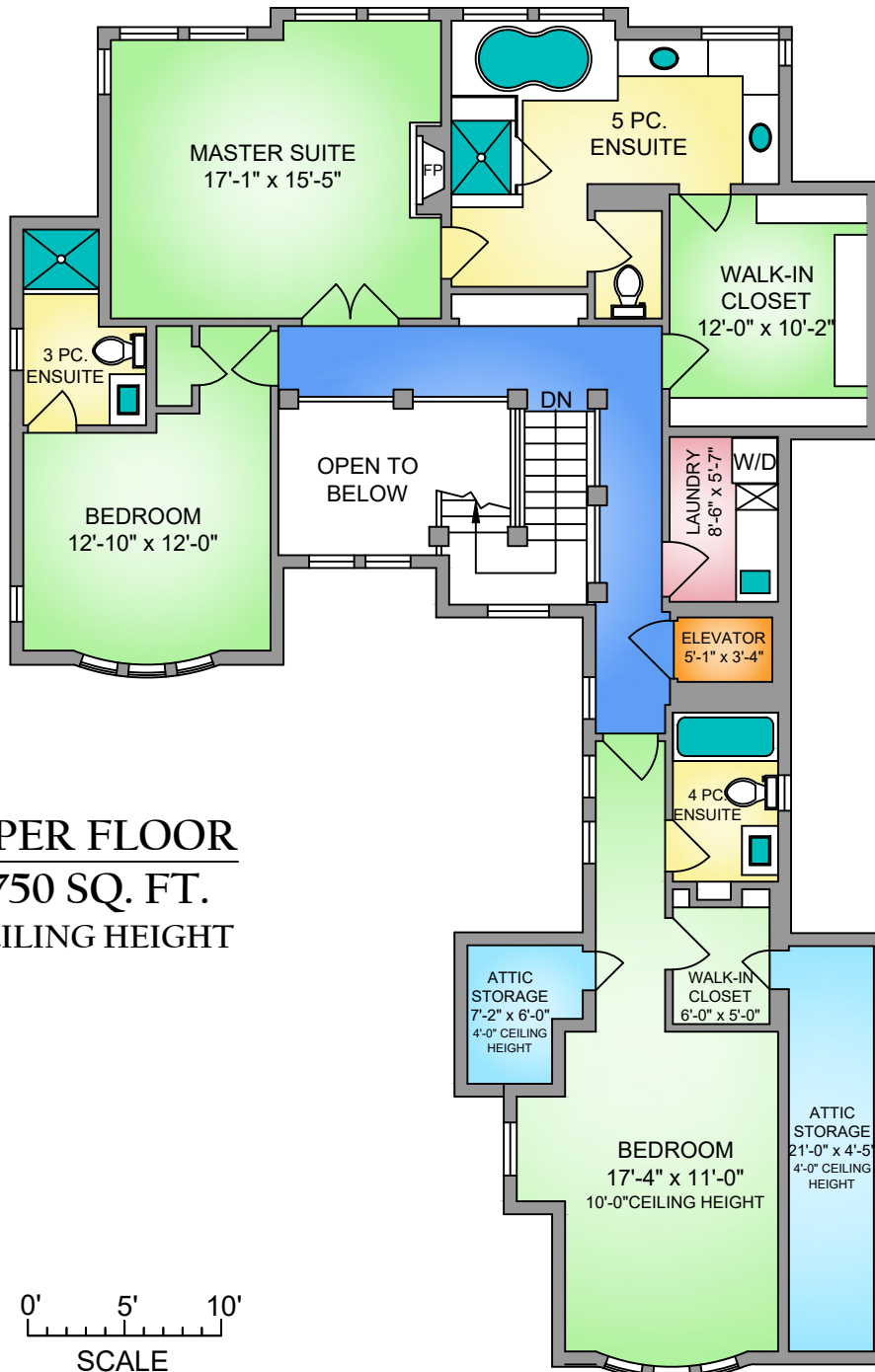
NORTH



| 1941 CRESCENT ROAD AUGUST 15, 2019 | | | |
|--|----------------|------------|-------------|
| PREPARED FOR THE EXCLUSIVE USE OF THE LEBLANC - PIERCY GROUP PLANS MAY NOT BE 100% ACCURATE, IF CRITICAL BUYER TO VERIFY. | | | |
| FLOOR | AREA (SQ. FT.) | | |
| | FINISHED | GARAGE | PATIO |
| LOWER | 1640 | - | 1562 |
| MAIN | 1636 | 487 | 126 |
| UPPER | 1750 | - | - |
| TOTAL | 5026 | 487 | 1688 |

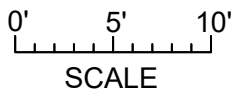
PROPERMEASURE
 FROM PRECISION TO PERFECTION
 propermeasure.com | 250.884.9753
 matt@propermeasure.com

ENGEL & VÖLKERS
LEBLANC · PIERCY GROUP



UPPER FLOOR
1750 SQ. FT.
9' CEILING HEIGHT

NORTH



| 1941 CRESCENT ROAD AUGUST 15, 2019 | | | |
|--|----------------|------------|-------------|
| PREPARED FOR THE EXCLUSIVE USE OF THE LEBLANC - PIERCY GROUP PLANS MAY NOT BE 100% ACCURATE, IF CRITICAL BUYER TO VERIFY. | | | |
| FLOOR | AREA (SQ. FT.) | | |
| | FINISHED | GARAGE | PATIO |
| LOWER | 1640 | - | 1562 |
| MAIN | 1636 | 487 | 126 |
| UPPER | 1750 | - | - |
| TOTAL | 5026 | 487 | 1688 |

