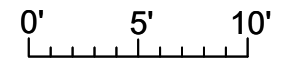
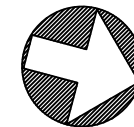


**MAIN FLOOR**  
**1616 SQ. FT.**  
**9' CEILING HEIGHT**



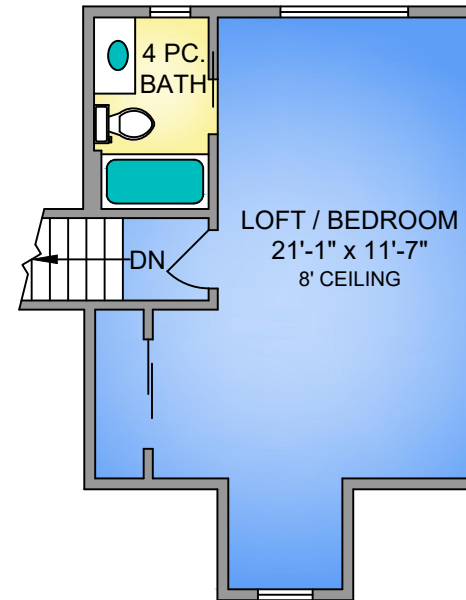
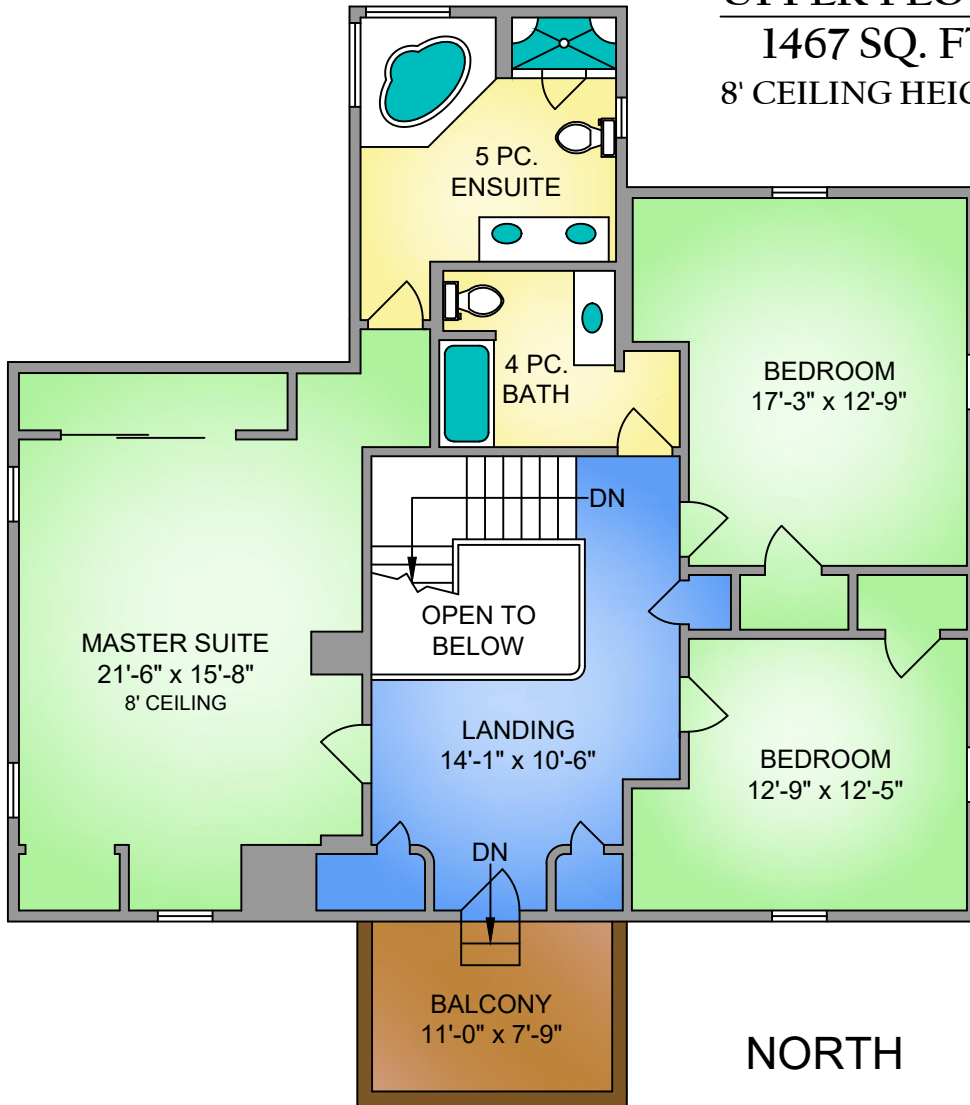
**NORTH**



**SCALE**

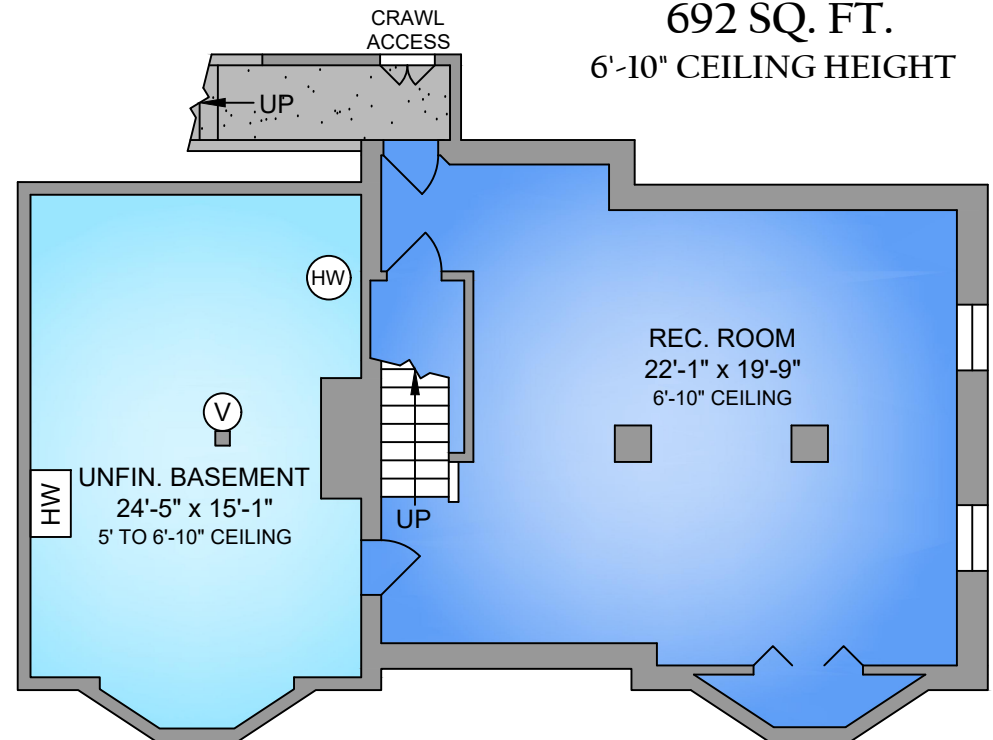
3350 UPPER TERRACE ROAD NOVEMBER 23, 2018 PREPARED FOR THE EXCLUSIVE USE OF THE LEBLANC · PIERCY GROUP PLANS MAY NOT BE 100% ACCURATE, IF CRITICAL BUYER TO VERIFY.				
FLOOR	AREA (SQ. FT.)			
	FINISHED	UNFINISHED	GARAGE	BALCONY / DECK
LOWER	692	381	-	-
MAIN	1616	-	726	235
UPPER	1862	-	-	85
<b>TOTAL</b>	<b>4170</b>	<b>381</b>	<b>726</b>	<b>320</b>

**UPPER FLOOR**  
1467 SQ. FT.  
8' CEILING HEIGHT

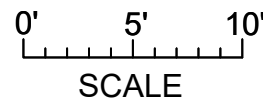


**UPPER FLOOR**  
444 SQ. FT.  
8' CEILING HEIGHT

**LOWER FLOOR**  
692 SQ. FT.  
6'-10" CEILING HEIGHT



NORTH



3350 UPPER TERRACE ROAD  
NOVEMBER 23, 2018

PREPARED FOR THE EXCLUSIVE USE OF  
PLANS MAY NOT BE 100% ACCURATE, IF CRITICAL BUYER TO VERIFY.

FLOOR	AREA (SQ. FT.)			
	FINISHED	UNFINISHED	GARAGE	BALCONY / DECK
LOWER	692	381	-	-
MAIN	1616	-	726	235
UPPER	1862	-	-	85
<b>TOTAL</b>	<b>4170</b>	<b>381</b>	<b>726</b>	<b>320</b>