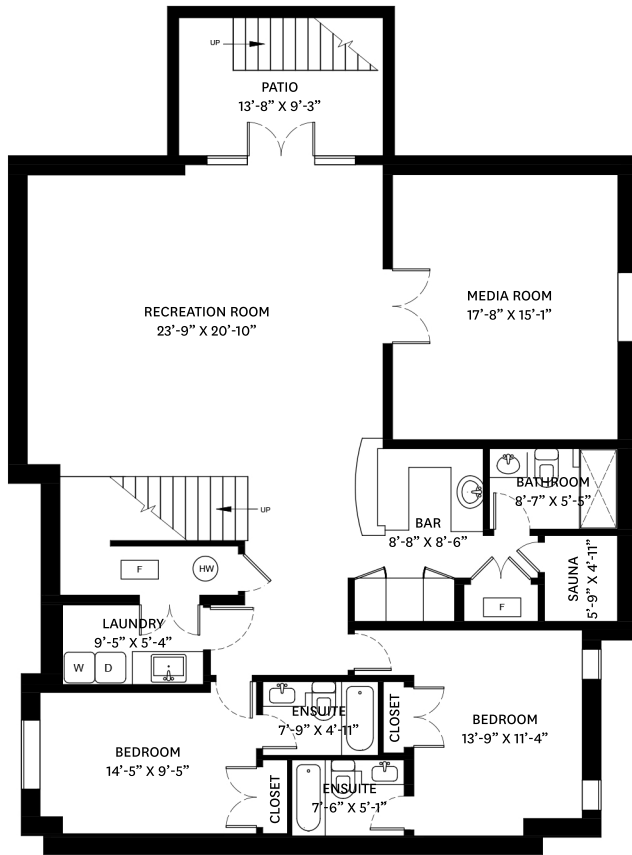
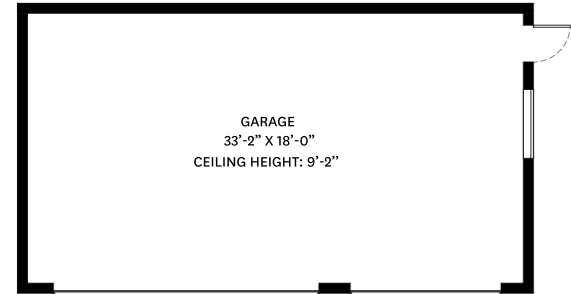
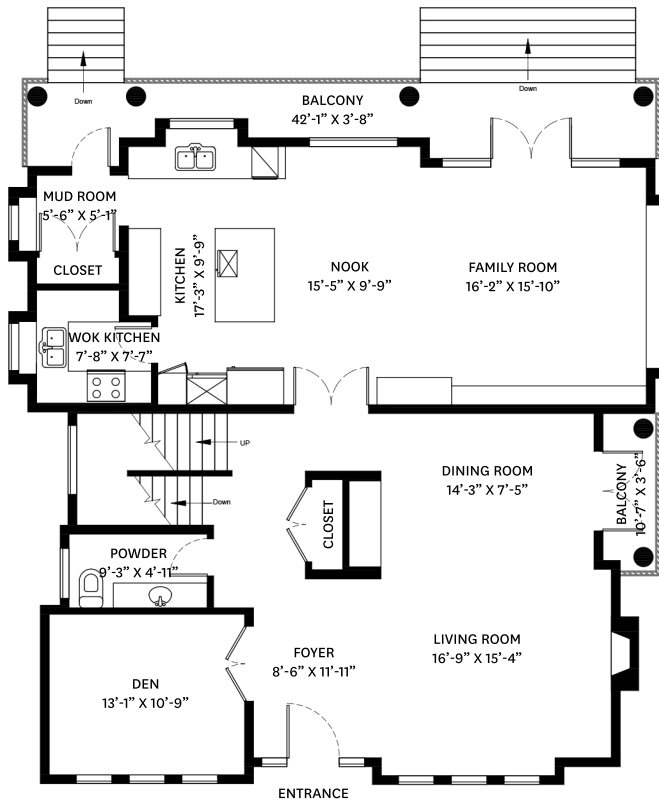


7390 HUDSON STREET, VANCOUVER, BC

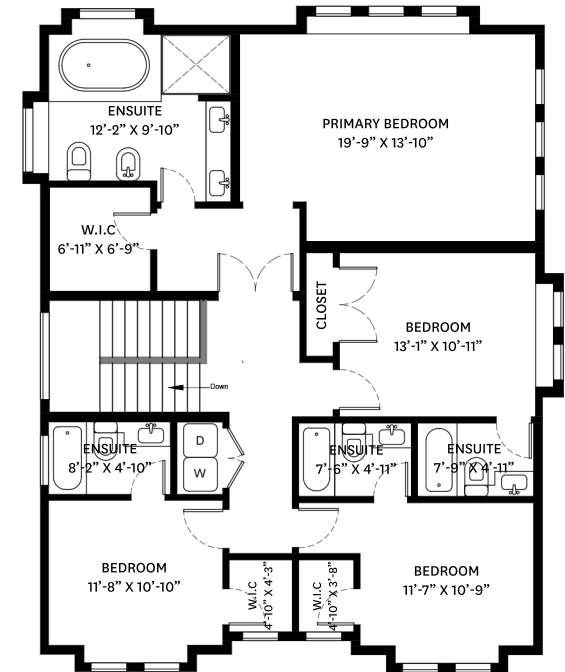
LOWER FLOOR TOTAL: 1,881 SQ.FT. GARAGE: 668 SQ. FT.
 MAIN FLOOR TOTAL: 1,652 SQ.FT. BALCONY: 217 SQ. FT.
 UPPER FLOOR TOTAL: 1,424 SQ.FT. PATIO: 126 SQ. FT.
TOTAL: 4,957 SQ.FT.



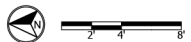
LOWER FLOOR PLAN
Ceiling Height: 9'-10"



MAIN FLOOR PLAN
Ceiling Height: 9'-11"



UPPER FLOOR PLAN
Ceiling Height: 9'-0"



Stanley Lam PREC*

604.773.3201
 stanleylamrealty@gmail.com
 www.stanleylamprec.com

floor plan designed by
 ishot.ca Enterprises Inc.
 604-368-7979
 http://ishot.ca

*PERSONAL REAL ESTATE CORPORATION. THE FLOOR PLAN ILLUSTRATION IS NOT SUITABLE FOR CONSTRUCTION/ ARCHITECTURAL PURPOSES.
 MEASUREMENTS ARE APPROXIMATE AND MAY NOT BE TO SCALE. E&O INSURED.