

**#903 – 110 Brew Street,  
Port Moody, B.C.**

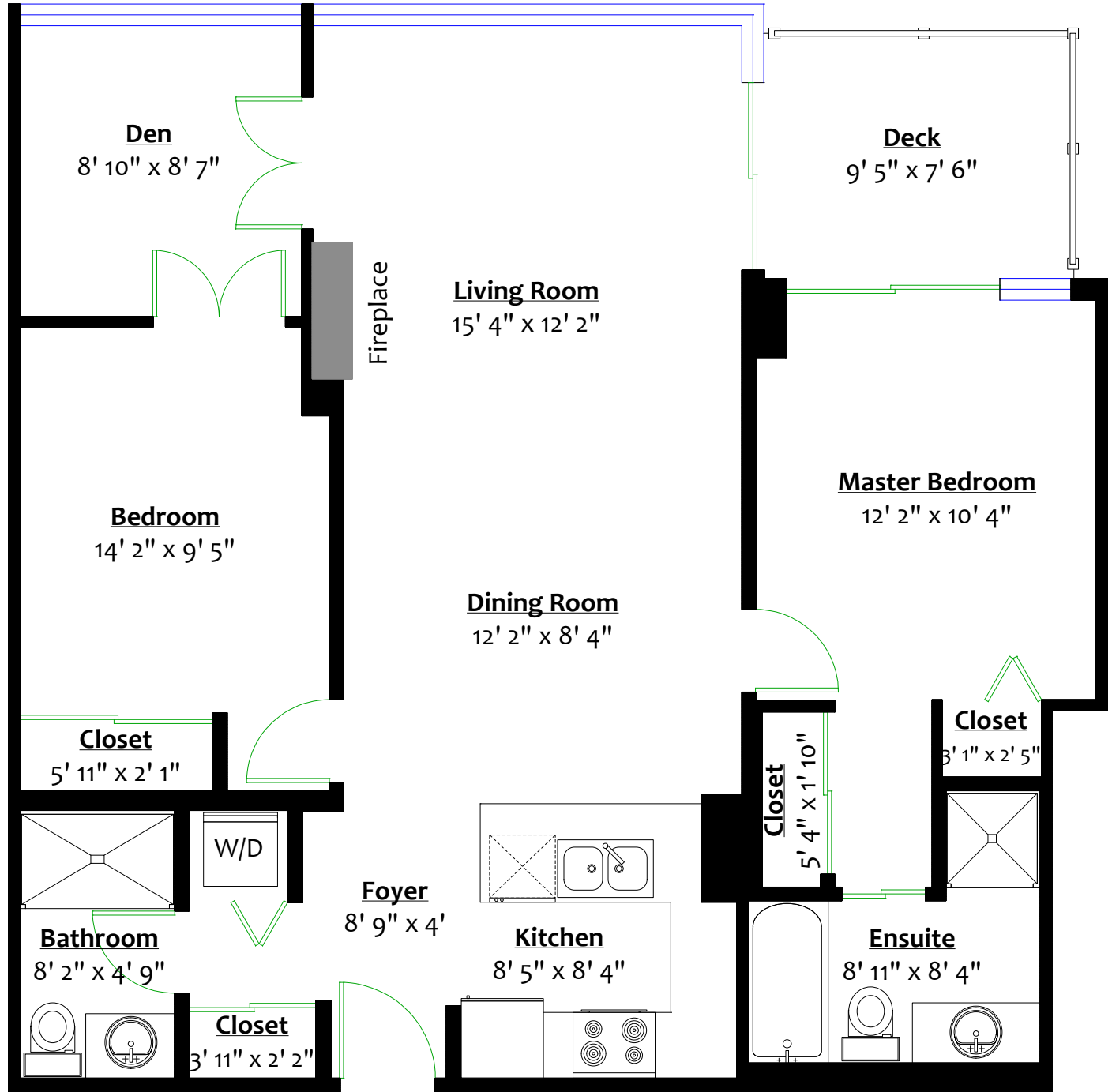
**Totals\*\***

Main Level: 1,003 sq. ft.

Deck: 70 sq. ft.

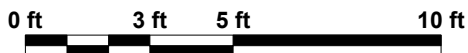


Marni Tritt Shannon Ezekiel  
604.537.5977 604.767.6166  
info@marniandshannon.com



**MAIN LEVEL**

Floor Area: 1,003 Sq. Ft.



\*\* Approx. based on interior measurements to exterior walls  
\*\* Total square footage not taken from original blueprints