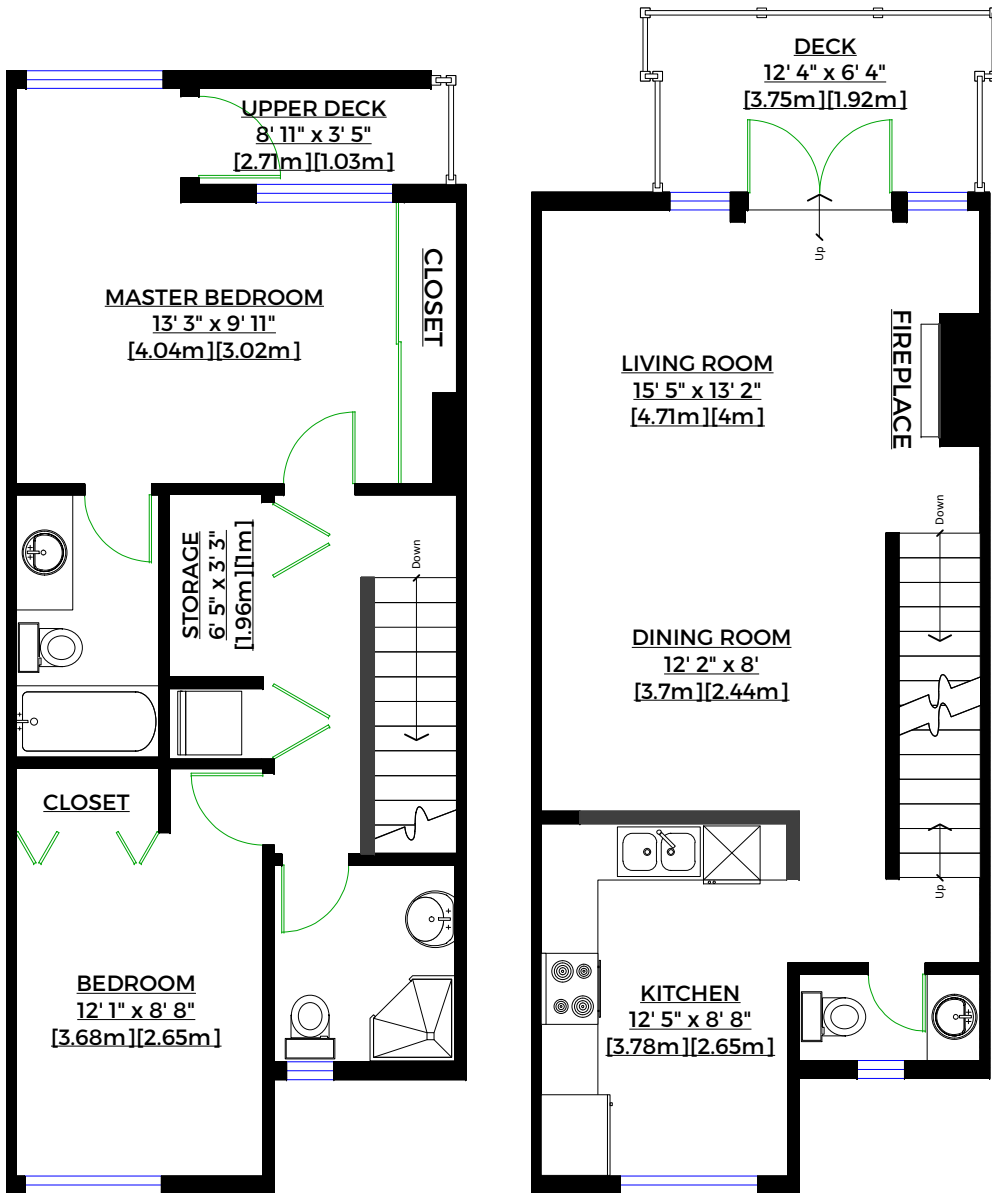


**#3 – 2305 West 10th Avenue,
 Vancouver, B.C.**



UPPER LEVEL
 Floor Area: 574 Sq. Ft. [53 sq. m.]

MAIN LEVEL
 Floor Area: 541 Sq. Ft. [50 sq. m.]

Totals**

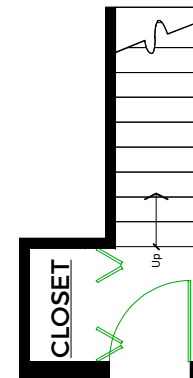
Main Level		
Floor Area:	477 sq. ft.	[44 sq. m.]
Exterior Walls:	64 sq. ft.	[6 sq. m.]
Total:	541 sq. ft.	[50 sq. m.]

Upper Level		
Floor Area:	500 sq. ft.	[46 sq. m.]
Exterior Walls:	74 sq. ft.	[7 sq. m.]
Total:	574 sq. ft.	[53 sq. m.]

Lower Level		
Floor Area:	48 sq. ft.	[4 sq. m.]
Exterior Walls:	13 sq. ft.	[1 sq. m.]
Total:	61 sq. ft.	[5 sq. m.]

Grand Total: 1,176 sq. ft. [108 sq. m.]

Deck:	74 sq. ft.	[7 sq. m.]
Upper Deck:	35 sq. ft.	[3 sq. m.]



LOWER LEVEL
 Floor Area: 61 Sq. Ft. [5 sq. m.]

** Approx. based on interior measurements to exterior walls
 ** Total square footage not taken from original blueprints

