

JACKIE & JOHN MACDONALD

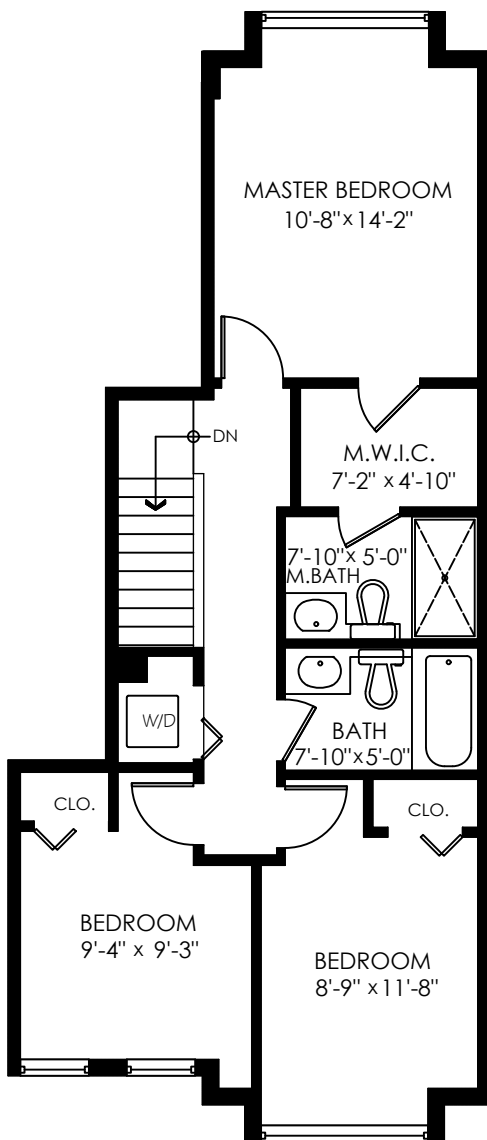
15-8277 161 Street
Surrey, BC

JACKIE MACDONALD PERSONAL REAL ESTATE CORPORATION

778-549-0696 | JACKIEJOHNREALESTATE@GMAIL.COM | WWW.JACKIEJOHNREALESTATE.COM

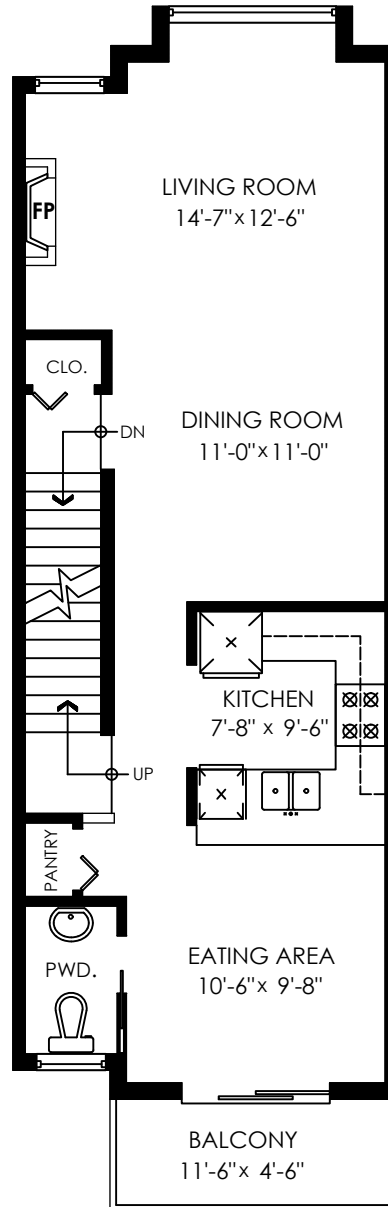
Main Floor: 668 sq.ft.
Upper Floor: 683 sq.ft.
Entry Floor: 124 sq.ft.
Total: 1,475 sq.ft.

Garage: 531 sq.ft.
Patio: 77 sq.ft.
Yard Area: 271 sq.ft.
Balcony: 52 sq.ft.
Total Extras: 931 sq.ft.



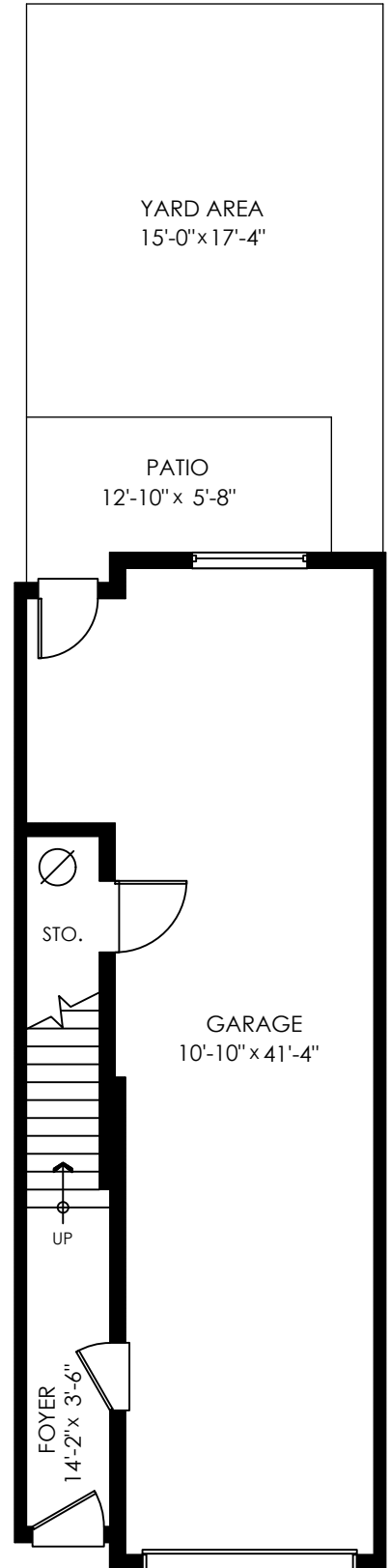
Upper Floor Plan

Floor Area: 683 sq.ft.
Ceiling Height: 8'



Main Floor Plan

Floor Area: 668 sq.ft.
Ceiling Height: 9'



Entry Floor Plan

Floor Area: 124 sq.ft.
Ceiling Height: 8'



Measuring, Scanning, Design & Permits | 604-876-3738



15-8277 161 Street
Surrey, BC

INFO@COTALA.COM
(604) 514-9589
WWW.COTALA.COM

Houses:

Total square footage is calculated to the outside of exterior walls.

Room sizes are dimensioned to the inside of the walls. This is because you need to know what you can fit in that room. When you add up the total of the room sizes it will not equal the total square footage of the property. This method of adding up room sizes will not account for wall thickness, interior hallways, exterior wall thickness, closets and many other areas that are included in total sqft.

Any space that is not suitable for year-round use or has a ceiling height of less than 4 feet will not be considered living space. An example of this includes a deck, garage or attic. If there isn't heat, insulation or room for an adult to stand, then it will not be included in the living space.

Cantilevered fireplaces, chimneys and plant windows are also not considered living space.

Included in the living space will be the measurements for stair treads for the floor they service as well as the space under the lowest floor's stairs.

Areas open to the floor below (also known as double height ceilings) are not considered living space because there is no floor.

Main Floor:	668 sq.ft.
Upper Floor:	683 sq.ft.
Entry Floor:	124 sq.ft.
Total:	1,475 sq.ft.

Garage:	531 sq.ft.
Patio:	77 sq.ft.
Yard Area:	271 sq.ft.
Balcony:	52 sq.ft.
Total Extras:	931 sq.ft.

