

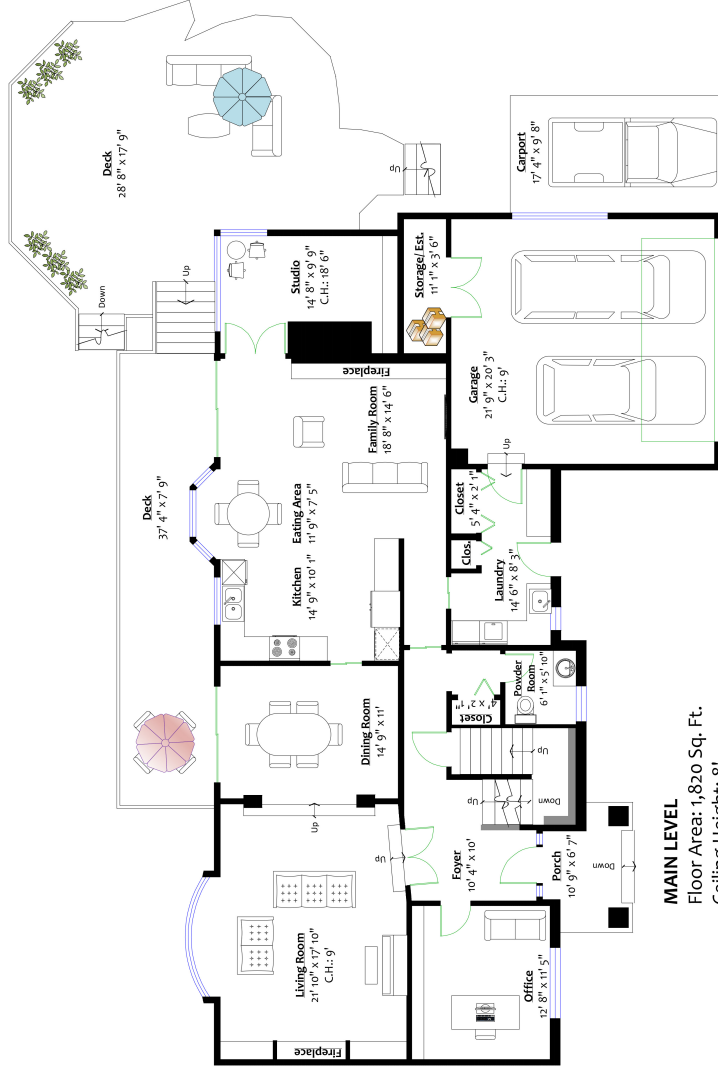
5219 Timberfeild Road,
West Vancouver, B.C.

Christy Laniado

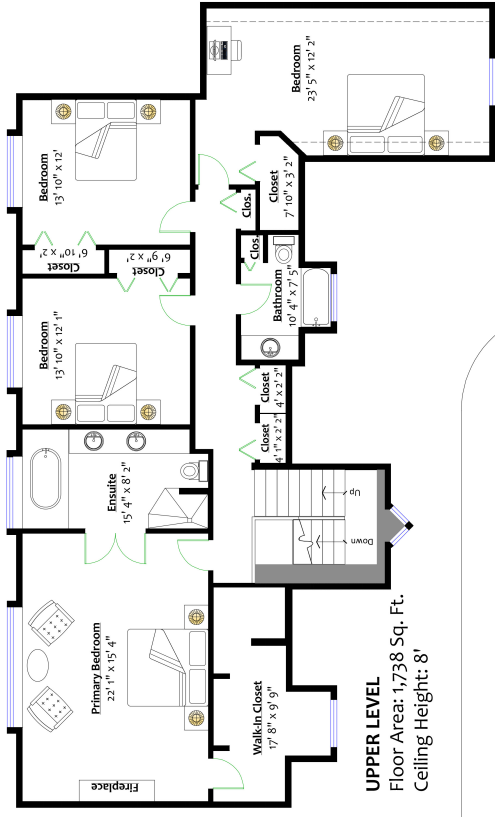


Totals**		
Main Level:	1,820 sq. ft.	Deck: 276 sq. ft.
Upper Level:	1,738 sq. ft.	Side Deck: 565 sq. ft.
Lower Level:	1,805 sq. ft.	Patio: 1,155 sq. ft.
		Pool: 503 sq. ft.
Total:	5,363 sq. ft.	Porch: 62 sq. ft.
		Garage: 462 sq. ft.
		Storage: 46 sq. ft.
		Carpport: 168 sq. ft.

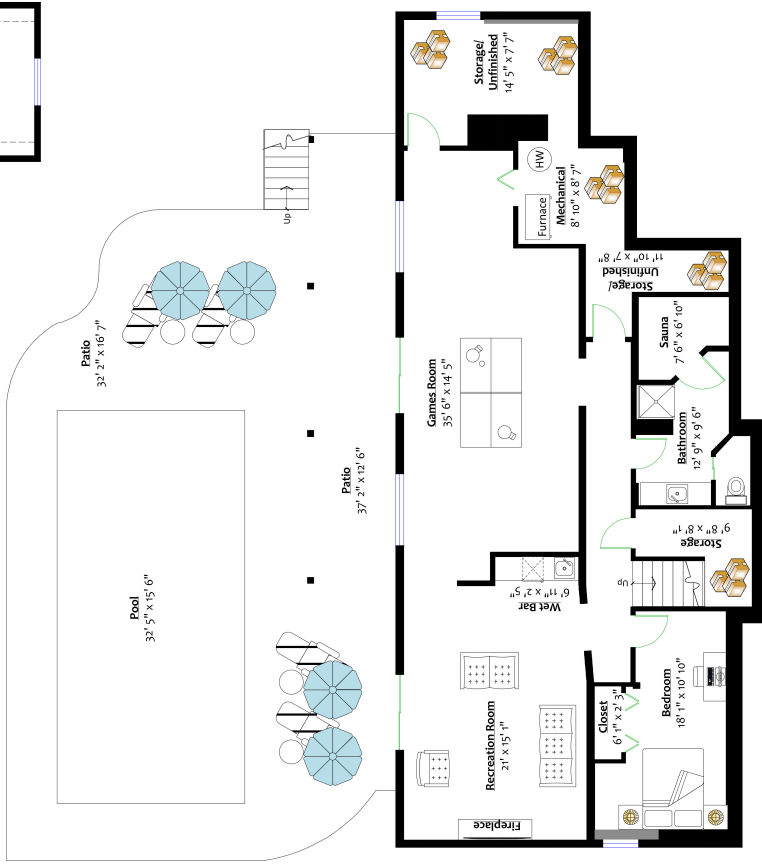
Total: 3,237 sq. ft.



MAIN LEVEL
Floor Area: 1,820 Sq. Ft.
Ceiling Height: 8'



UPPER LEVEL
Floor Area: 1,738 Sq. Ft.
Ceiling Height: 8'



LOWER LEVEL
Floor Area: 1,805 Sq. Ft.
Ceiling Height: 8' 10"

