



# Corrine Donohoe

604.761.8531  
corrine@corrinedonohoe.com  
www.corrinedonohoe.com



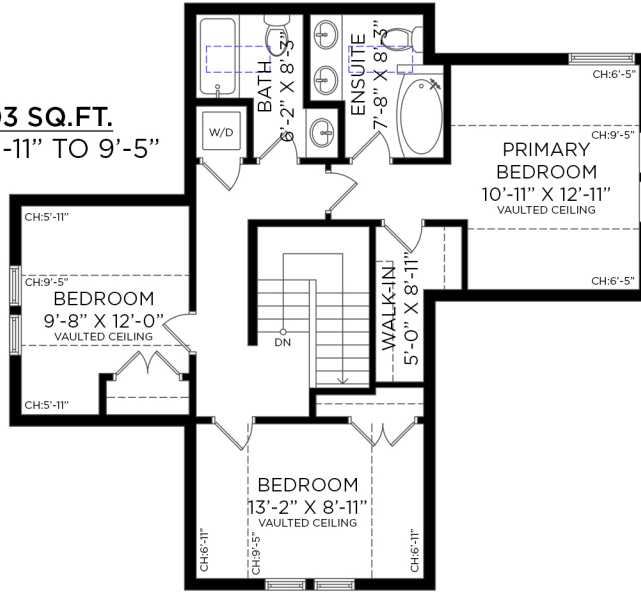
# 3375 CHESTERFIELD AVE NORTH VANCOUVER, BC

6 BEDROOMS + 3 1/2 BATHROOMS

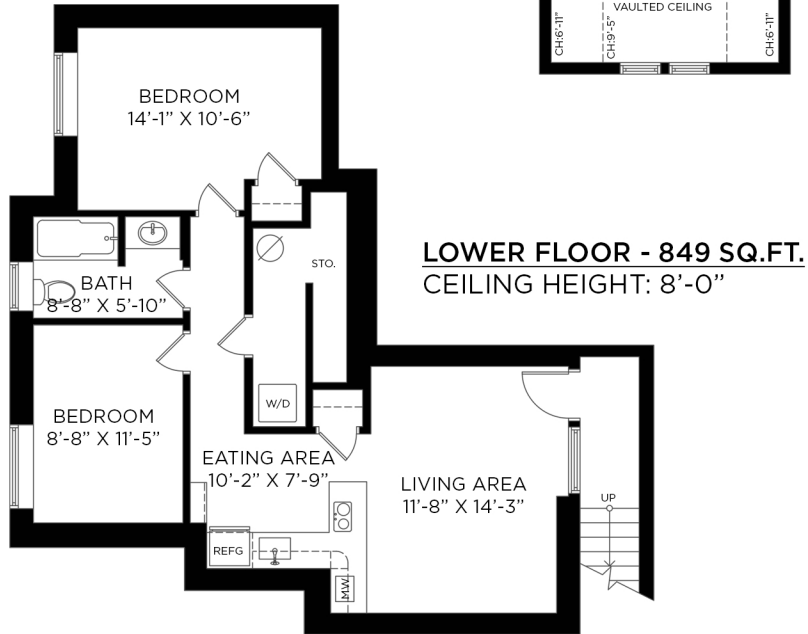
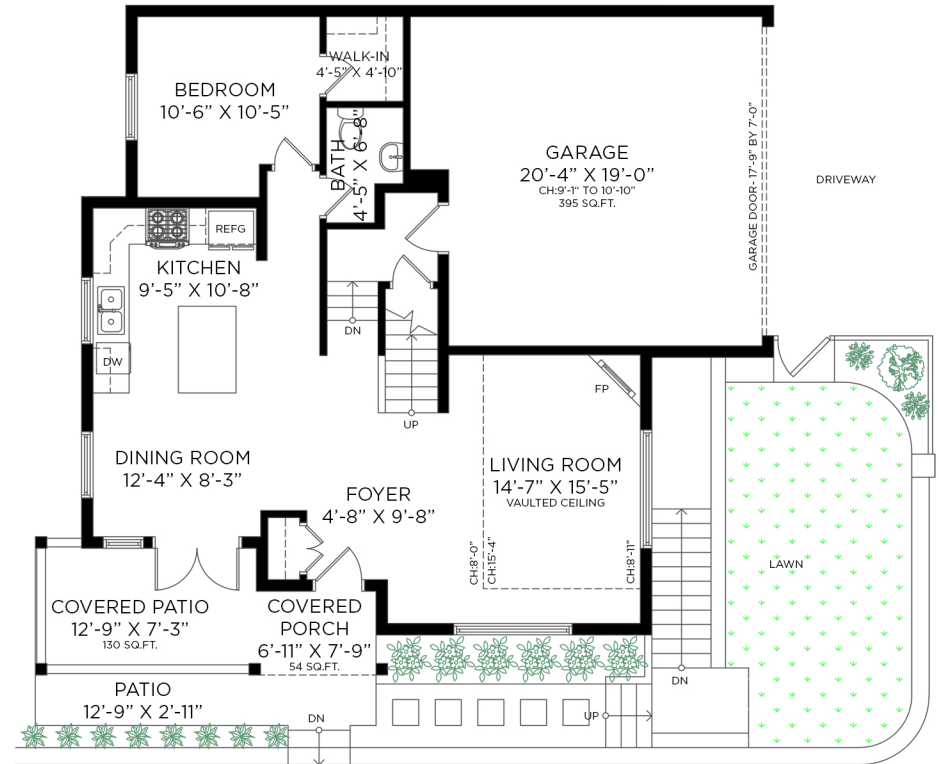
LOWER FLOOR:	849 SQ.FT.
MAIN FLOOR:	849 SQ.FT.
UPPER FLOOR:	803 SQ.FT.
<b>TOTAL INTERIOR:</b>	<b>2,501 SQ.FT.</b>

ATTACHED GARAGE:	395 SQ.FT.
EXTERIOR LIVING:	184 SQ.FT.

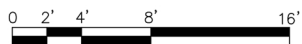
**UPPER FLOOR - 803 SQ.FT.**  
CEILING HEIGHT: 5'-11" TO 9'-5"



**MAIN FLOOR - 849 SQ.FT.**  
CEILING HEIGHT: 8'-0" TO 15'-4"



**ENTRANCE**



Floor plan not suitable for architectural/construction purposes. ANSI Z765 stand used to calculate square footage. Buyer to verify. E&O insured for \$1,000,000.

