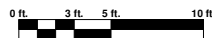
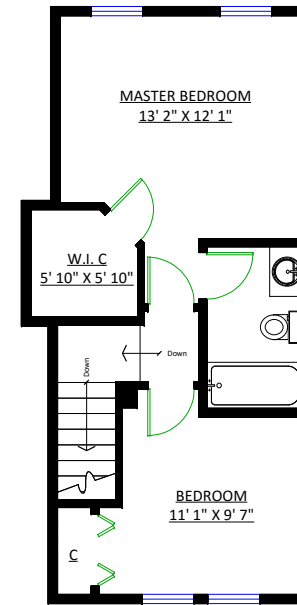
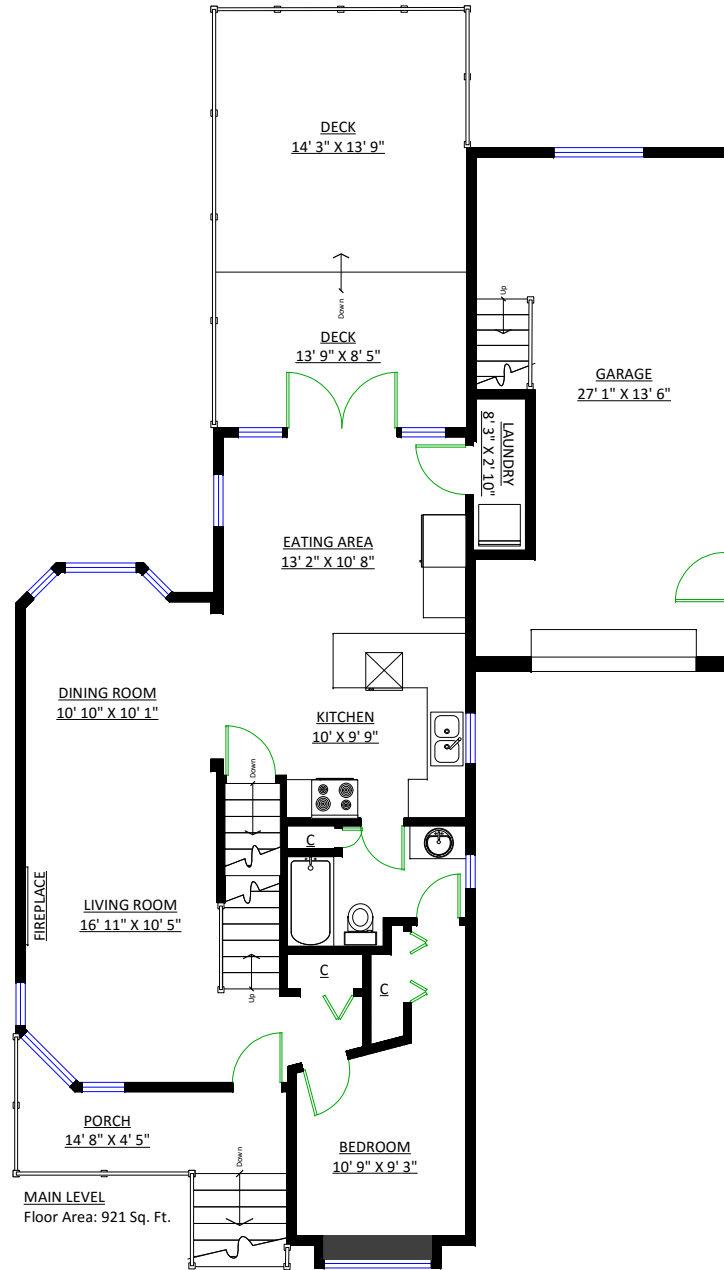
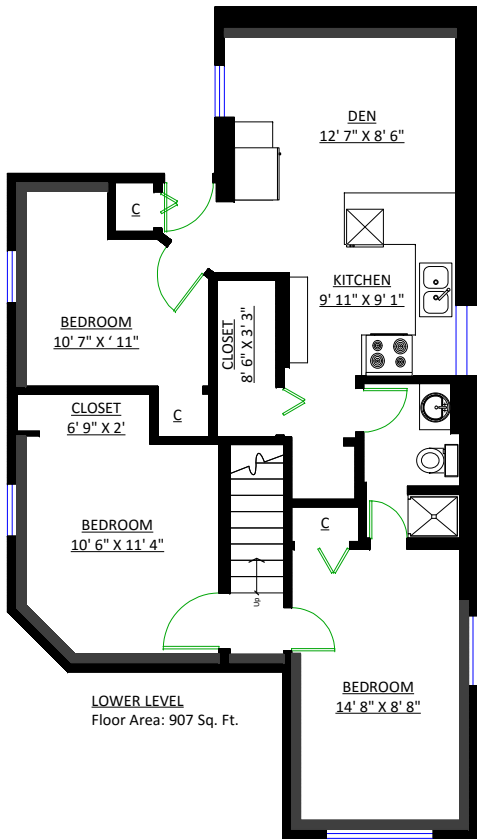


**3888 Mt. Seymour Parkway
North Vancouver, B.C.**

Totals**

Main Level: 921 sq. ft.
Upper Level: 472 sq. ft.
Lower Level: 907 sq. ft.
Total: 2,300 sq. ft.

Garage: 374 sq. ft.
Deck: 311 sq. ft.
Porch: 96 sq. ft.
Total: 781 sq. ft.



** Approx. based on interior measurements to exterior walls
** Total square footage not taken from original blueprints