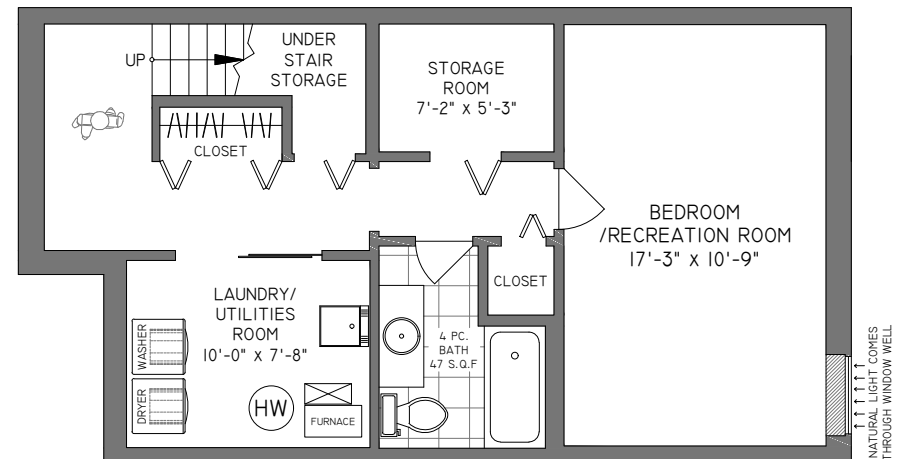
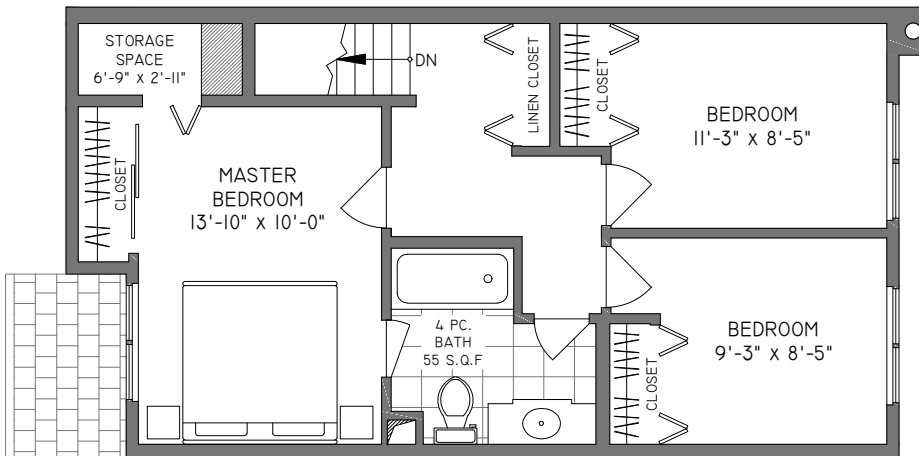


LOWER FLOOR
586 SQ. FT.
7'-8" CEILING HEIGHT



UPPER FLOOR
594 SQ. FT.
8'-0" CEILING HEIGHT



#81 - 1930 CEDAR VILLAGE CRESCENT, NORTH VANCOUVER

FLOOR	AREA (SQ. FT.)	
	FINISHED	PATIO
MAIN	587	313
UPPER	594	-
LOWER	586	-
TOTAL	1767	313