

**Greg Pearson**

Personal Real Estate Corporation

Cell: 604-626-3838

Fax: 604-984-3350

BC Toll-Free 888-682-9711

greg@gregpearson.ca

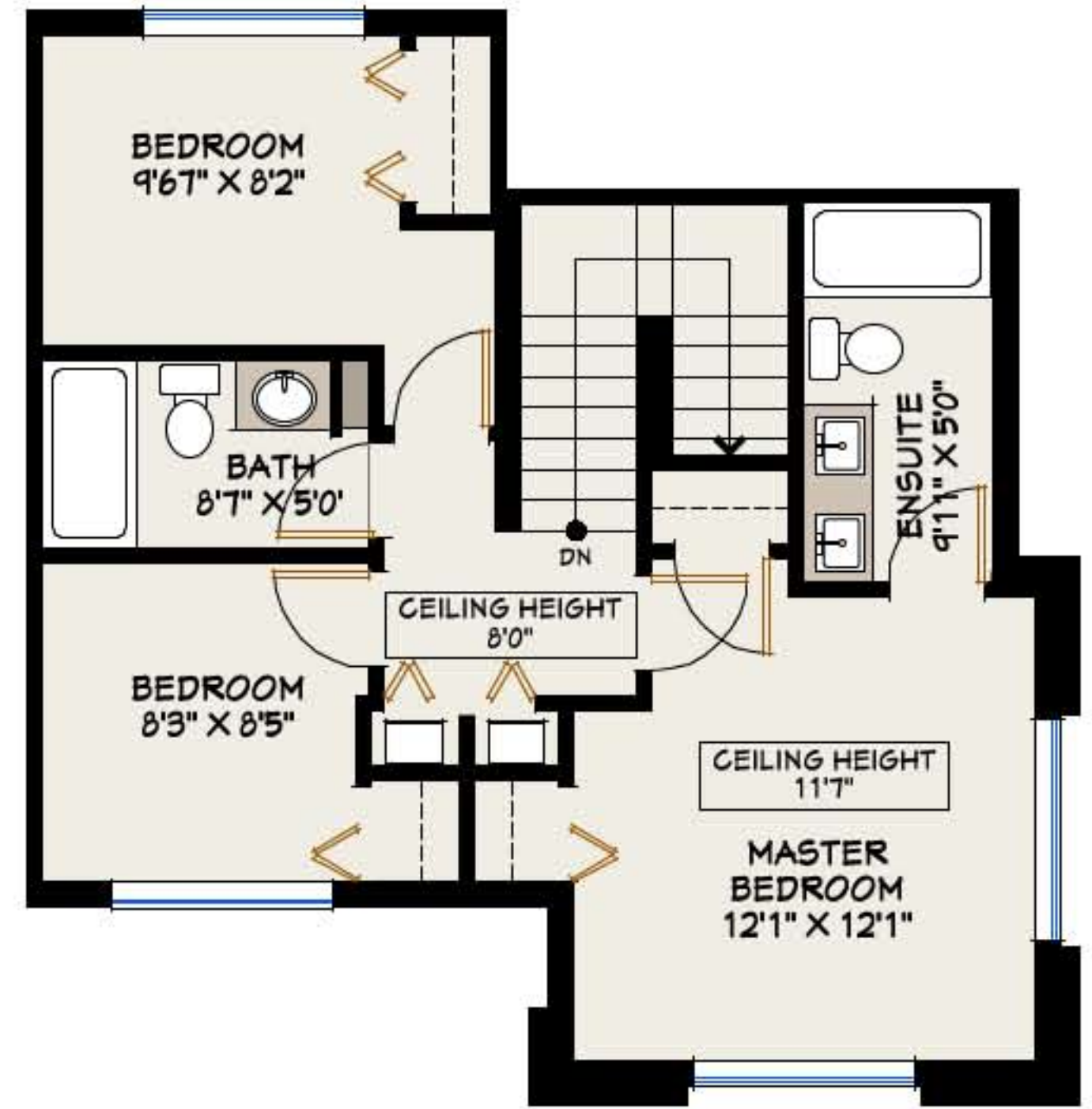
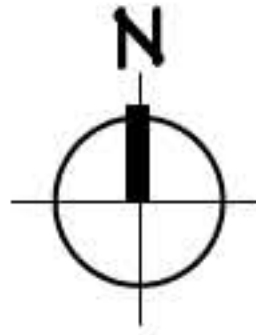
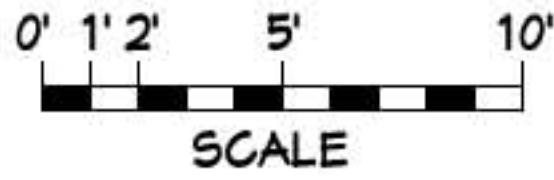
www.gregpearson.ca

15 - 757 ORWELL STREET  
NORTH VANCOUVER, BC

UPPER LEVEL:	608 SF
MAIN LEVEL:	624 SF
LOWER LEVEL:	266 SF
FINISHED FLOOR AREA:	1498 SF
GARAGE:	481 SF

FLOOR AREAS ARE DERIVED FROM THE STRATA PLAN

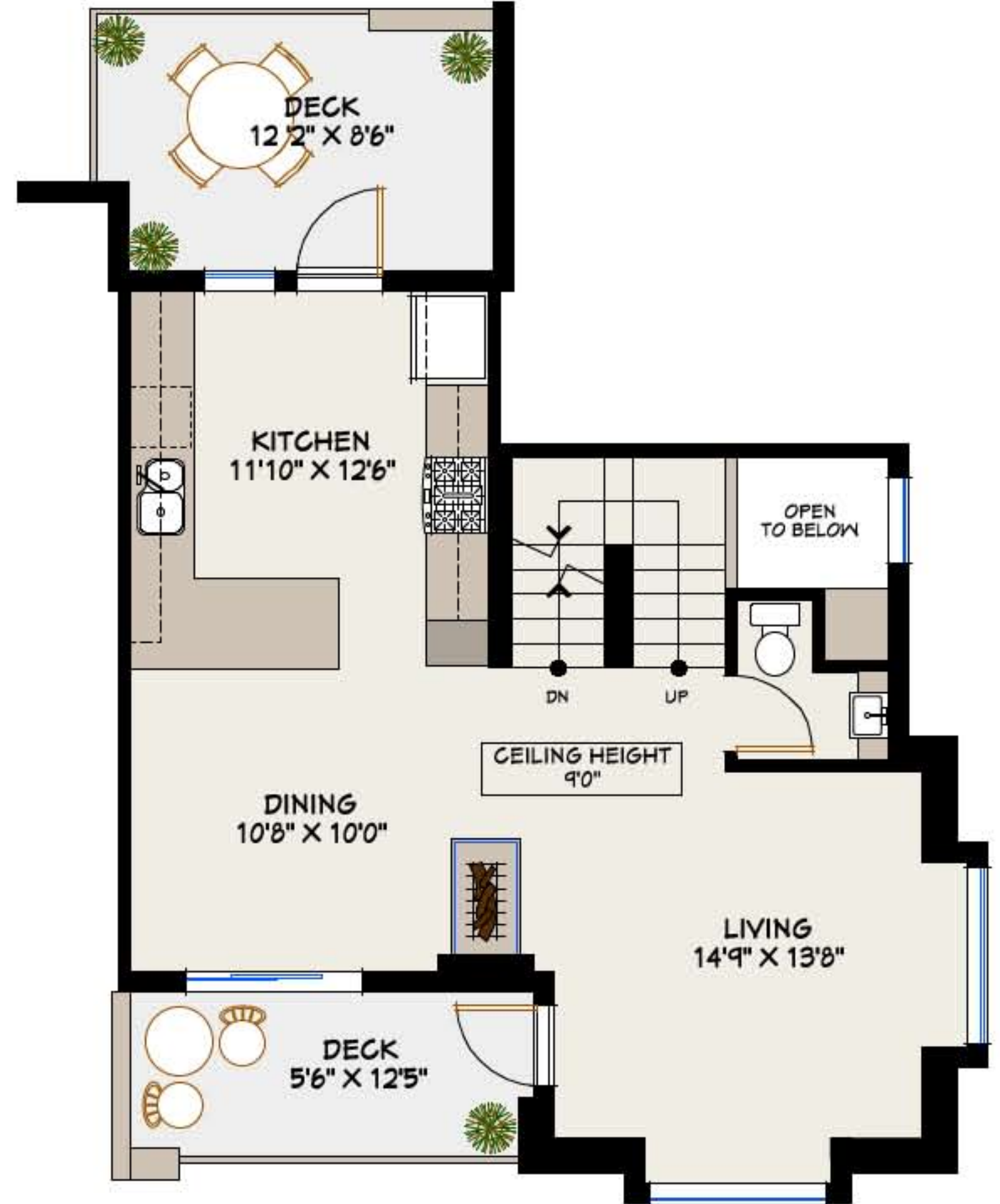
ALL INFORMATION FURNISHED REGARDING THIS PROPERTY IS FROM SOURCES DEEMED RELIABLE BUT NO WARRANTY REPRESENTATION IS MADE TO THE ACCURACY THEREOF



UPPER LEVEL



LOWER LEVEL



MAIN LEVEL