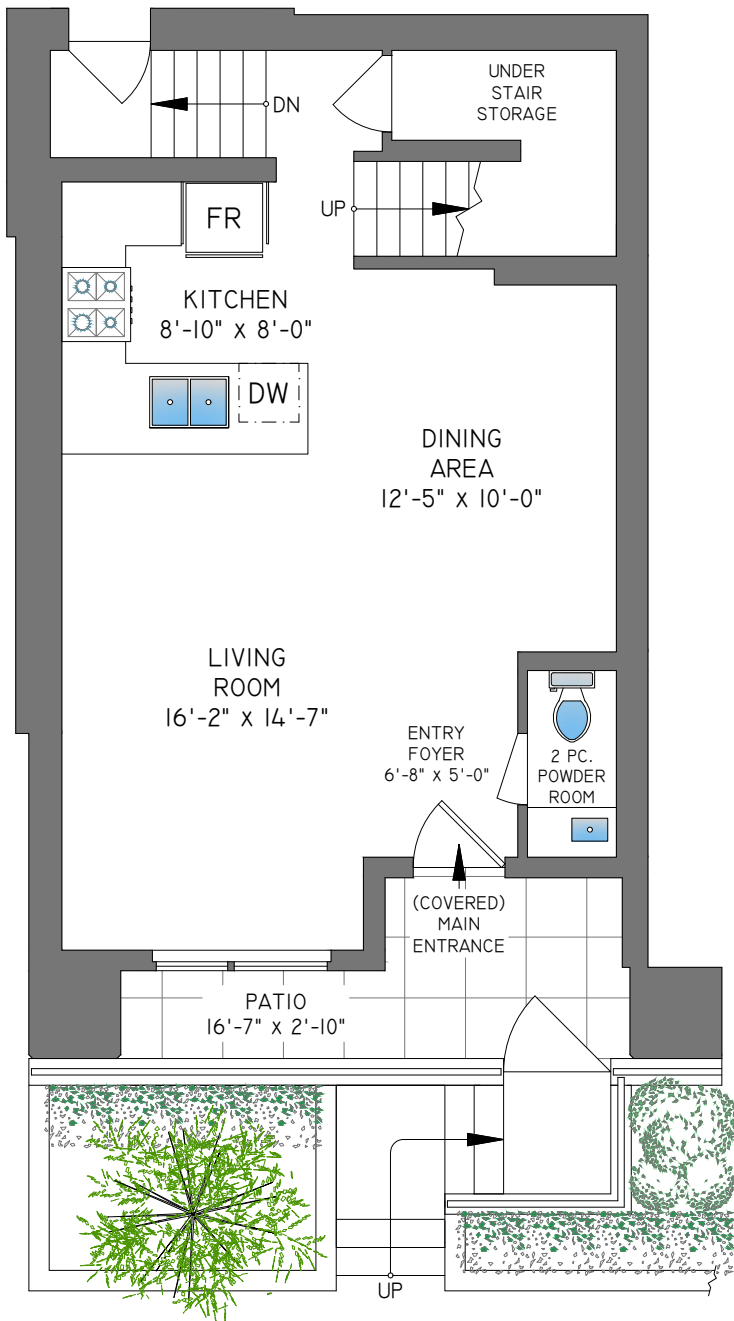


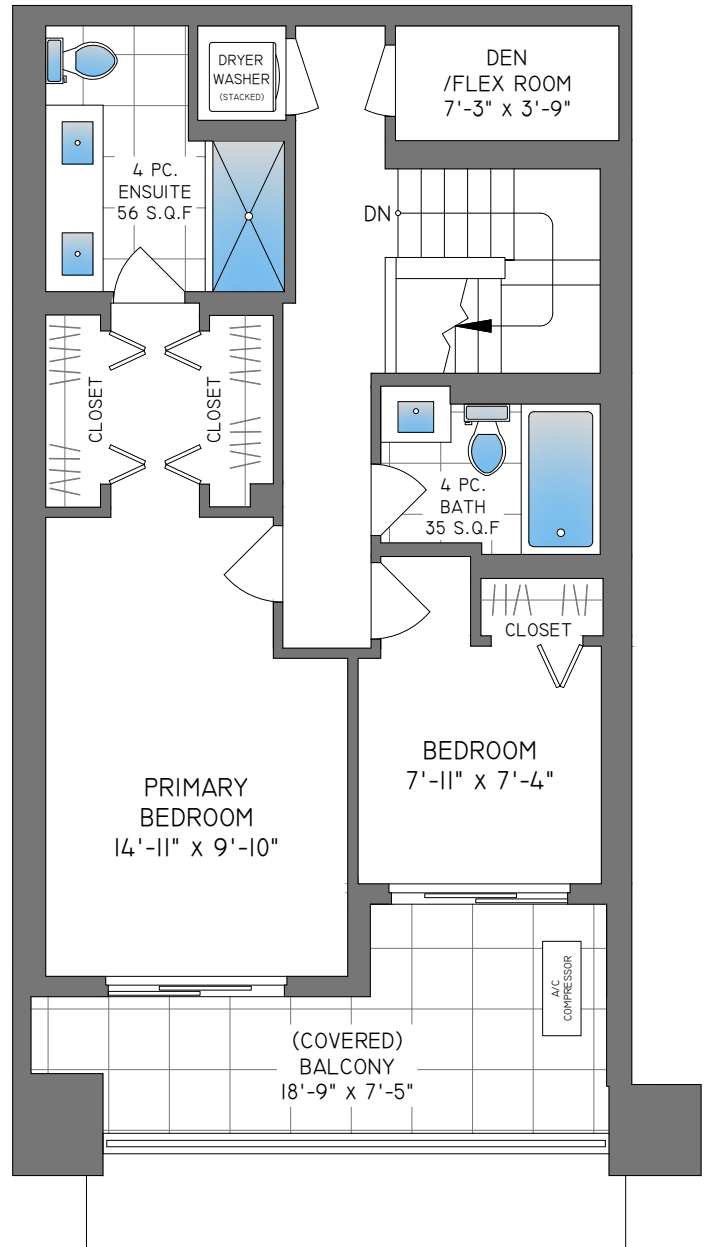
MAIN FLOOR 608 SQ. FT.

8'-0" CEILING HEIGHT



UPPER FLOOR 616 SQ. FT.

7'-0" - 8'-0" CEILING HEIGHTS



TH1 - 128 E 8TH STREET, NORTH VANCOUVER

FLOOR	AREA (SQ. FT.)	
	FINISHED	BALCONY/PATIO
MAIN	608	71
UPPER	616	102
TOTAL	1224	173