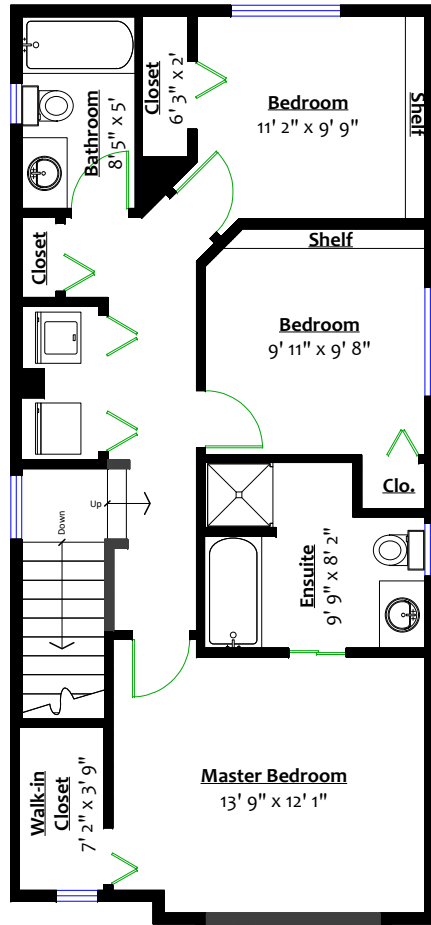


**24111 102A Avenue,
Maple Ridge, B.C.**

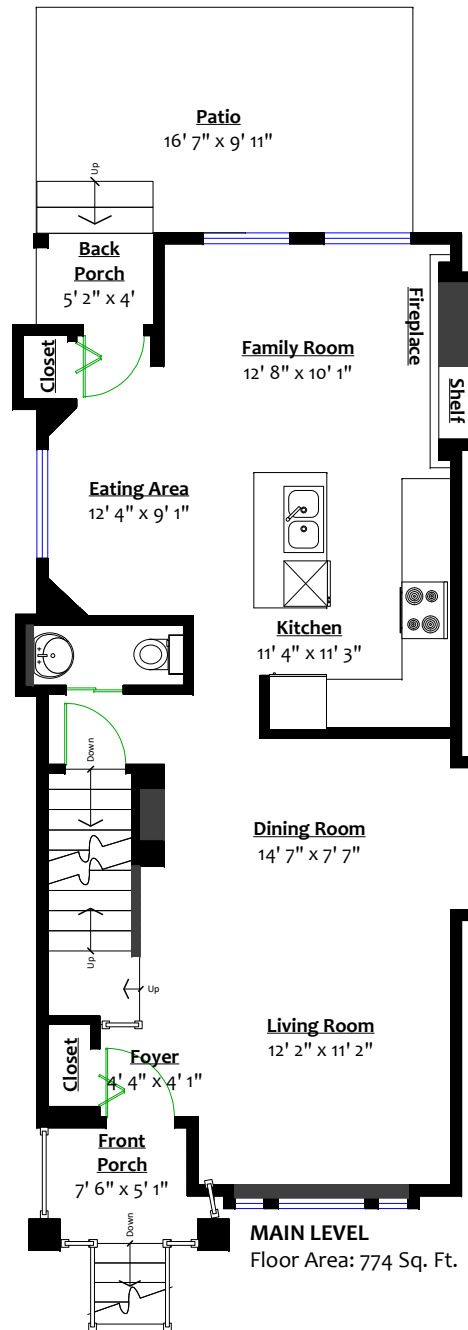


Totals**

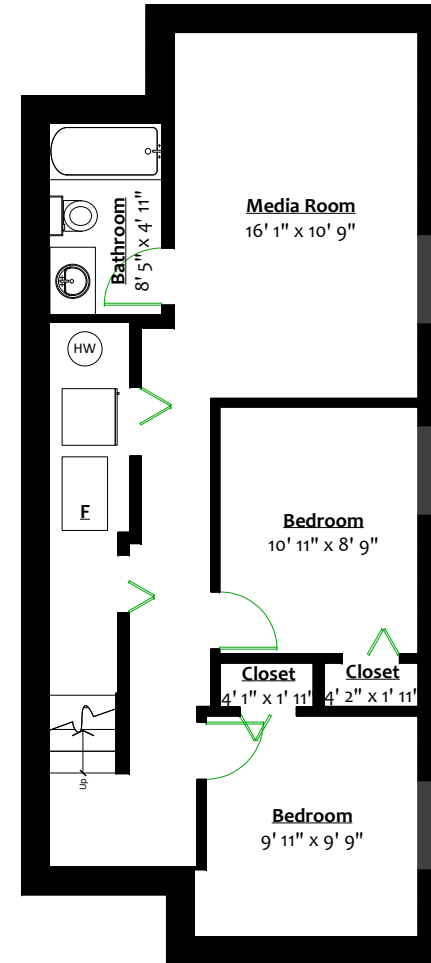
Main Level:	774 sq. ft.	Front Porch:	33 sq. ft.
Upper Level:	751 sq. ft.	Back Porch:	21 sq. ft.
Lower Level:	696 sq. ft.	Patio:	165 sq. ft.
Total (fin.):	2,221 sq. ft.	Total:	219 sq. ft.
Mechanical:	54 sq. ft.		
Grand Total:	2,275 sq. ft.		



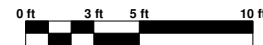
UPPER LEVEL
Floor Area: 751 Sq. Ft.



MAIN LEVEL
Floor Area: 774 Sq. Ft.



LOWER LEVEL
Finished Floor Area: 696 Sq. Ft.
Unfinished Floor Area: 54 Sq. Ft.



** Approx. based on interior measurements to exterior walls
** Total square footage not taken from original blueprints