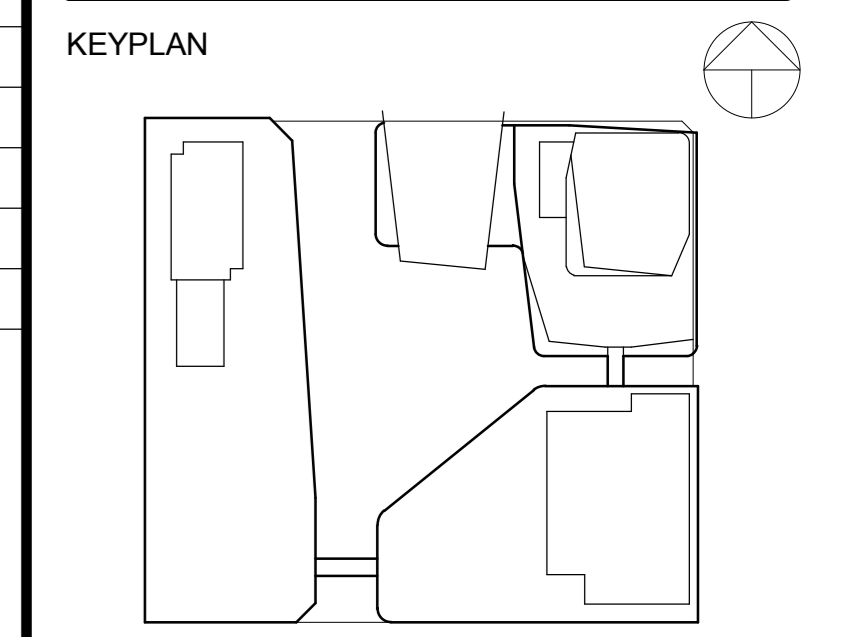


**ISSUED FOR**

No.	Date	Description
1	JUNE 27, 2016	DD100% - UPDATED INFORMATION
2	AUG 22, 2016	GYPSUM WALL BOARD PACKAGE DRAWINGS PRE-TENDER ISSUE - RESIDENTIAL AREAS
3	SEPT. 01, 2016	GYPSUM BOARD TENDER
4	DEC. 6, 2016	INTERIOR FINISHES REVIEW
5	DEC. 23, 2016	INTERIOR FINISHES TENDER
6	JAN. 21, 2017	DOOR HARDWARE TENDER
7	MAR. 10, 2017	IFC
8	APR. 26, 2017	PCN 17
9	MAY 5, 2017	BUILDING PERMIT APPLICATION
10	OCT. 31, 2017	PCN 17R
11	JULY 13, 2018	ISSUED FOR BID
12	OWN 161	ADDENDUM U2301
13	OCT. 31, 2018	CONSTRUCTION
14	JAN. 26, 2019	PCN 8 - US004
15	MAR 26, 2019	BUILDING PERMIT
16	APR 2, 2019	PCN 9.2 - US004 OFFICE

General Notes:  
1. All areas are approximate. Actual square footage may vary from that stated herein.  
2. Final car parking, bicycle parking and locker count to be confirmed pending structural and mechanical input.  
3. All figures are effective of the current state of schematic and conceptual design and are subject to change.  
4. These are preliminary numbers and are not to be relied upon for legal agreements, project valuations, etc. etc.



**Block AC**

**RESIDENTIAL LEVEL 50, CUSTOM UNIT TYPE PLAN**

GDATE: 03/21/16 SCALE: 1:50  
DRAWN: Author CHECKED: Checker  
PLOT DATE: 4/15/2019 3:34:52 PM

**A42.34.5**

1412

**MPU CUSTOM LIGHT LEGEND**

SYMBOL	LIGHTING TYPE
[Symbol]	LED RECESSED STRIP LIGHT - CL01
[Symbol]	LED SURFACE MOUNTED LIGHT - CL02
[Symbol]	LED BATH LIGHT BAR - CL03
[Symbol]	LED VANITY LIGHT - CL04
[Symbol]	LED PICTURE LIGHT - CL05
[Symbol]	LED RECESSED SPOT LIGHT - CL06

**ELECTRICAL LEGEND**

SYMBOL	DESCRIPTION
[Symbol]	DUPLEX OUTLET - WALL MOUNT
[Symbol]	DUPLEX OUTLET - FLOOR MOUNT
[Symbol]	DUPLEX GFI OUTLET - WALL MOUNT
[Symbol]	TV OUTLET - FLOOR MOUNT
[Symbol]	TEL DATA OUTLET - FLOOR MOUNT
[Symbol]	TV OUTLET - WALL MOUNT
[Symbol]	TEL DATA OUTLET - WALL MOUNT
[Symbol]	COMMUNICATION PANEL - DATA PANEL
[Symbol]	ELECTRICAL PANEL - POWER PANEL
[Symbol]	FLOOR BOX
[Symbol]	ELECTRIC FIREPLACE
[Symbol]	THERMOSTAT

**NOTE:** - ALL OUTLET MOUNTING LEVELS INDICATED ARE FROM CENTRE OF JUNCTION BOX TO FINISH.  
- ALL OUTLET SWITCH COVER PLATES ON MILLWORK, KITCHEN BACKSPLASH & WOOD PANELS TO BE STAINLESS STEEL LOW GRAY COLOR UNLESS SPECIFIED OTHERWISE.  
- REFER TO ELECTRICAL DRAWINGS FOR DETAIL.

**LIGHTING LEGEND**

SYMBOL	LIGHTING TYPE
[Symbol]	RECESSED DOWN LIGHT - L10
[Symbol]	RECESSED WALL WASH - L10
[Symbol]	SQUARE RECESSED DOWN LIGHT - L10
[Symbol]	SQUARE RECESSED WALL WASH - L10
[Symbol]	RECESSED PUCK LIGHT - L11
[Symbol]	LINEAR WALL MOUNTED WALL WASH - L12
[Symbol]	LINEAR STRIP LIGHT - L13
[Symbol]	LINEAR RECESSED WALL WASH - L13
[Symbol]	LINEAR SURFACE COVE LIGHT - L12
[Symbol]	LINEAR UNDERCABINET LIGHT - L17
[Symbol]	LINEAR SURFACE LED LIGHT - L12, L2A
[Symbol]	CEILING FLUSH MOUNT LIGHT - L10, L14, L17
[Symbol]	SQUARE CEILING FLUSH MOUNT LIGHT - L10, L14
[Symbol]	BATHROOM VANITY MIRROR LIGHT - L16 (CENTERED ON VANITY SINK)
[Symbol]	TRACK LIGHT - L15
[Symbol]	WALL RECESSED LED STEP LIGHT - L15 (SEE UNIT FINISHES PLAN)
[Symbol]	PENDANT LIGHT - T.B.D.
[Symbol]	JUNCTION BOX FOR FUTURE LIGHT
[Symbol]	SMOKE ALARM
[Symbol]	EXHAUST FAN
[Symbol]	ACCESS PANEL
[Symbol]	LINEAR SURFACE LED LIGHT - F02.2

**NOTE:** - ALL LIGHTING FIXTURE LOCATIONS TO BE CONFIRMED WITH THE INTERIOR DESIGNER AT FRAMEUP STAGE PRIOR TO BUILDING.  
- GENERAL CONTRACTOR TO PROVIDE BLOCKING, CEILING REINFORCEMENT AT ATTACHED TO STRUCTURAL AS REQUIRED.

**INTERIOR FINISHES LEGEND**

SYMBOL	DESCRIPTION
[Symbol]	CEILING HEIGHT & FINISH
[Symbol]	TILE FLOORING TAG
[Symbol]	WOOD FLOORING TAG
[Symbol]	WALL TILE TAG
[Symbol]	CABINET HARDWARE
[Symbol]	DOOR TAG

**NOTE:**  
**FLOOR FINISHES**  
1. REFER TO ELEVATIONS AND PLANS FOR PATTERNS AND LAYOUT.  
2. REFER TO FINISHES SCHEDULE FOR PATTERNS, WIDTH AND COLOUR TO BE DETERMINED AFTER MATERIAL HAS BEEN RECEIVED AND INSPECTED.  
3. INSTALL ALL FINISHES ACCORDING TO MANUFACTURER'S RECOMMENDATIONS AND SPECIFICATIONS.

**BATHROOM ACCESSORIES SCHEDULE**

SYMBOL	ACCESSORIES TYPE
[Symbol]	VANITY MIRROR AND LIGHT - TYPE L16
[Symbol]	TOWEL RING
[Symbol]	24" TOWEL BAR
[Symbol]	30" TOWEL BAR
[Symbol]	TOILET PAPER HOLDER
[Symbol]	SHOWER ROD
[Symbol]	SHOWER NICHE
[Symbol]	IF SHOWER DOOR BACK TO BACK PULL
[Symbol]	24" SINGLE SIDED GLASS MOUNTED SHOWER TOWEL BAR
[Symbol]	ROBE HOOK
[Symbol]	ALUMINUM GLASS U-CHANNEL
[Symbol]	24" BACK TO BACK TOWEL BAR
[Symbol]	180 DEGREE GLASS TO GLASS STANDARD HINGE
[Symbol]	WALL MOUNTED FULL BACK PLATE HINGE
[Symbol]	SHOWER GLASS ENCLOSURE
[Symbol]	SHOWER GLASS DOOR
[Symbol]	WALL MOUNTED MIRROR
[Symbol]	GRAB BAR
[Symbol]	MEDICINE CABINET
[Symbol]	ELECTRIC TOWEL WARMER - RADIANT
[Symbol]	ELECTRIC TOWEL WARMER - QUADRO
[Symbol]	IN-WALL COUNTDOWN TIMER

**MECHANICAL LEGEND**

SYMBOL	DESCRIPTION
[Symbol]	MECHANICAL DIFFUSER 114 X 118
[Symbol]	MECHANICAL DIFFUSER 114 X 888
[Symbol]	ACCESS PANEL 200 X 300
[Symbol]	HRV ACCESS PANEL 600 X 900
[Symbol]	BATHROOM EXHAUST GRILL
[Symbol]	RETURN AIR GRILL
[Symbol]	SUPPLY GRILL - SIZE VARIES

**NOTE:** 1. ALL DIFFUSERS ARE TO BE 20mm FROM EDGE OF CEILING TO CENTRELINE UNLESS OTHERWISE NOTED.

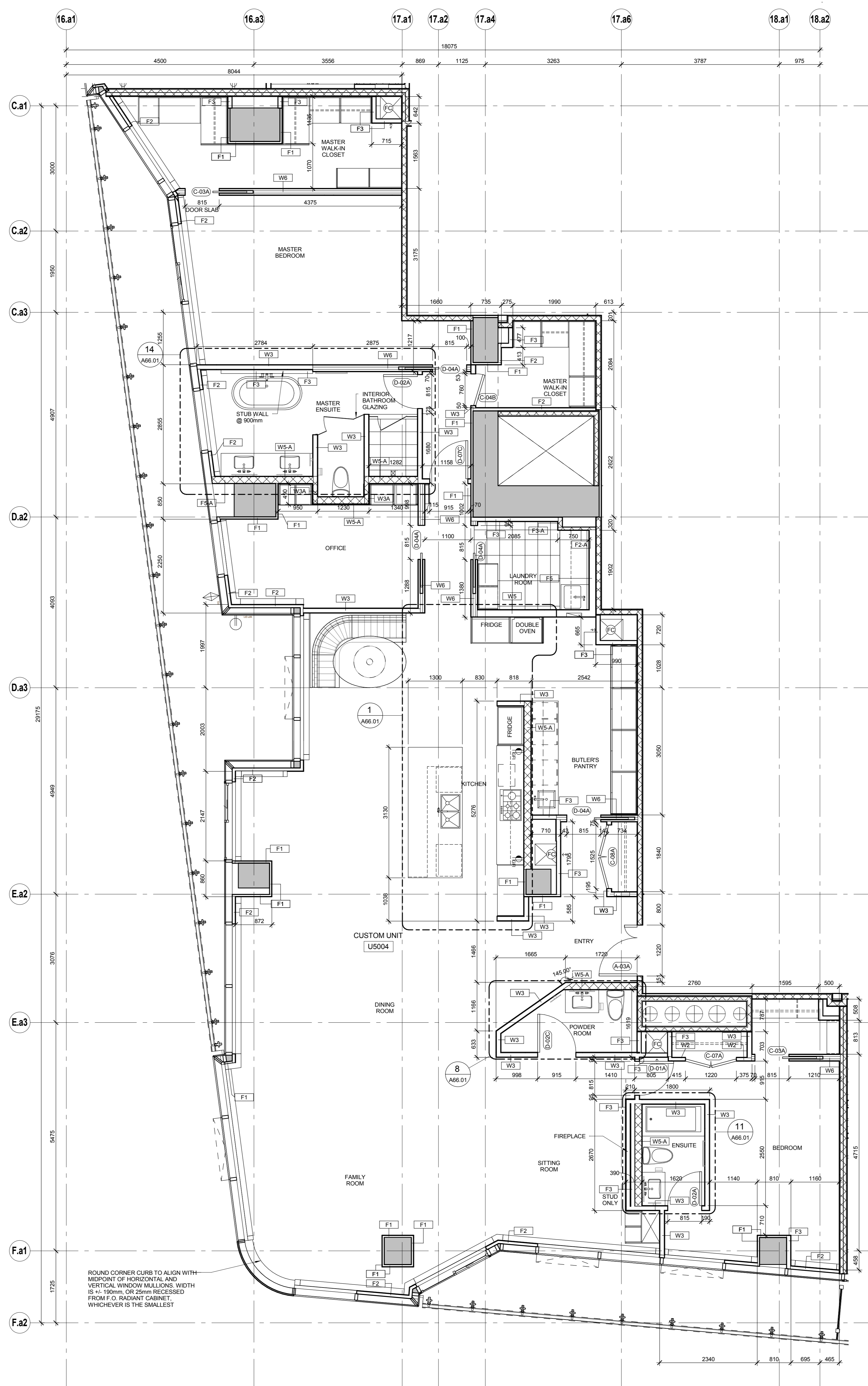
**RADIANT CABINET NOTES**

SYMBOL	ACCESSORIES TYPE
[Symbol]	TYPICAL RADIANT CABINET END CAP
[Symbol]	RADIANT CABINET TIGHT AGAINST CURTAIN WALL
[Symbol]	END CAP UNIT TO SUIT
[Symbol]	RADIANT CABINET FILLER CAP BETWEEN CURTAIN WALL AND CABINET
[Symbol]	RADIANT CABINET FILLER CAP BETWEEN UNITS

**GENERAL LEGEND**

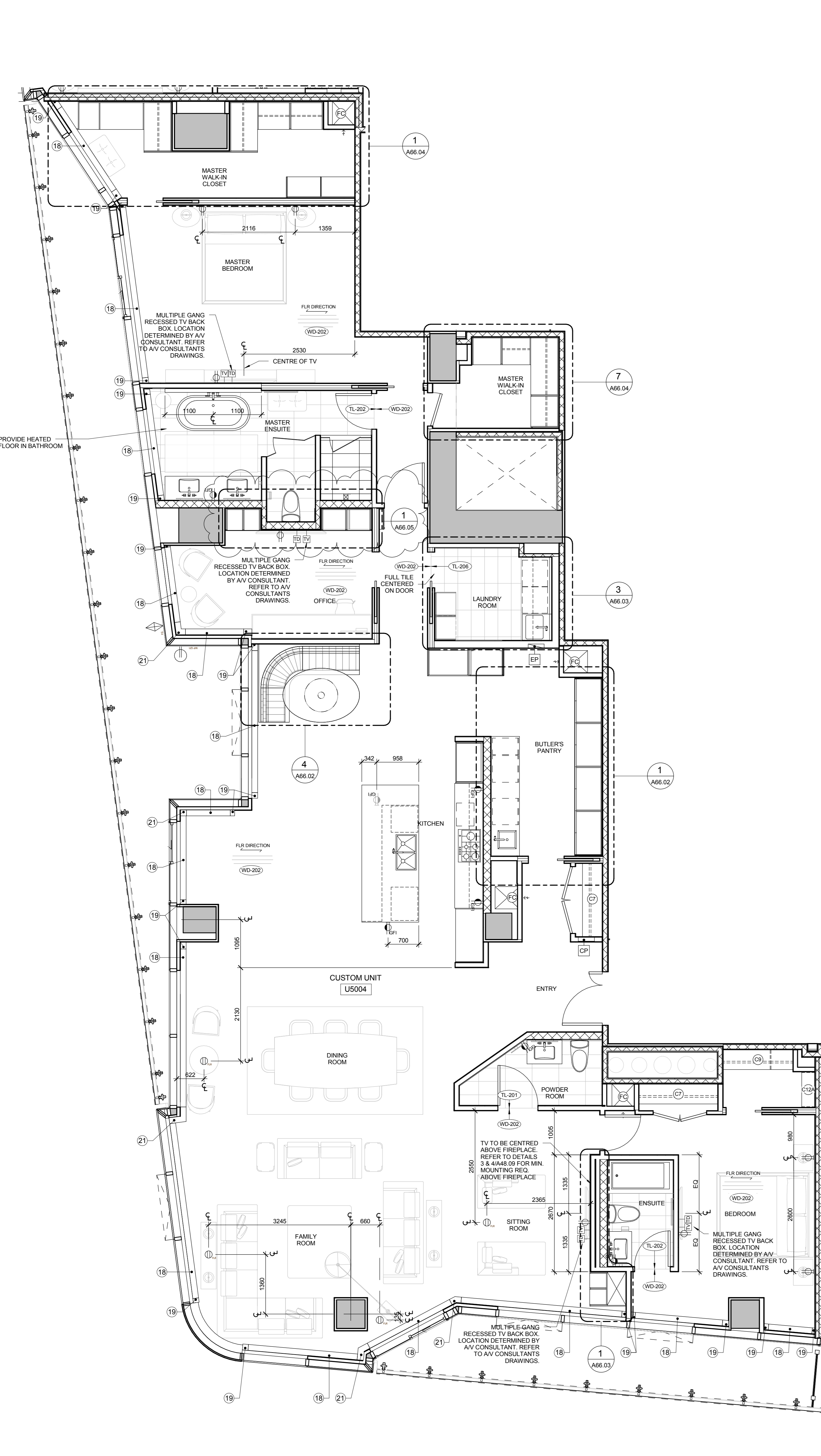
SYMBOL	DESCRIPTION
[Symbol]	ISLAND TYPE TAG, SEE A44.22
[Symbol]	KITCHEN TYPE TAG, SEE A44.21 & 22
[Symbol]	FANCOIL UNIT
[Symbol]	500mm x 500mm ACCESS PANEL (AT RC-02.03, 04 & 05 PRE-HEAT COIL LOCATIONS)
[Symbol]	450mm x 450mm ACCESS PANEL (AT RC-01 PRE-HEAT COIL LOCATIONS)
[Symbol]	500mm x 500mm ACCESS PANEL (PROVIDE ONE PER SUITE BY MAIN RISERS (ONE PER LEVEL FOR TOWNHOUSES))
[Symbol]	1000mm x 1000mm ACCESS PANEL (AT HRV LOCATIONS ON LV06-01)
[Symbol]	810mm x 810mm ACCESS PANEL (AT HRV LOCATIONS ON LV02A & LV15-03)
[Symbol]	810mm x 810mm ACCESS PANEL
[Symbol]	200mm x 200mm ACCESS PANEL - PROVIDE FOR GAS VALVE, LINT TRAP AND MAKEUP AIR DUCT DAMPERS

**NOTE:** TYPE OF ACCESS PANELS AS PER LOCATIONS.  
- FRAMELESS BAUCO PLUS AT LIVING ROOM, KITCHEN, BEDROOM, BATHROOM, ENSUITE, MASTER ENSUITE, POWDER ROOM, DEN, FAMILY ROOM, MASTER WALK-IN CLOSET.  
- FRAMED ACCUOR UP5000 AT LAUNDRY ROOM AND CLOSET OTHER THAN MASTER WALK-IN CLOSET.  
- FRAMED ACCUOR UP5000 AT LAUNDRY ROOM AND CLOSET OTHER THAN MASTER WALK-IN CLOSET. WHERE PANEL DOOR SWING IS OBSTRUCTED ABOVE SHELVING IN LAUNDRY ROOM OR CLOSET @ (EXCEPT MASTER WALK-IN CLOSET), INSTALL REMOVABLE PANEL ACCESS DOOR, BLIND WORK.



**1 UNIT PARTITION - U5004 - LV50**  
A42.34.5 1:50

**PARTITION PLAN NOTES:**  
1. ALL DIMENSIONS ARE MEASURED TO FACE OF GYPSUM BOARD AND DOOR SLAB SIZE, UNLESS NOTED OTHERWISE.



**2 UNIT FINISH PLAN - U5004 - LV50**  
A42.34.5 1:50