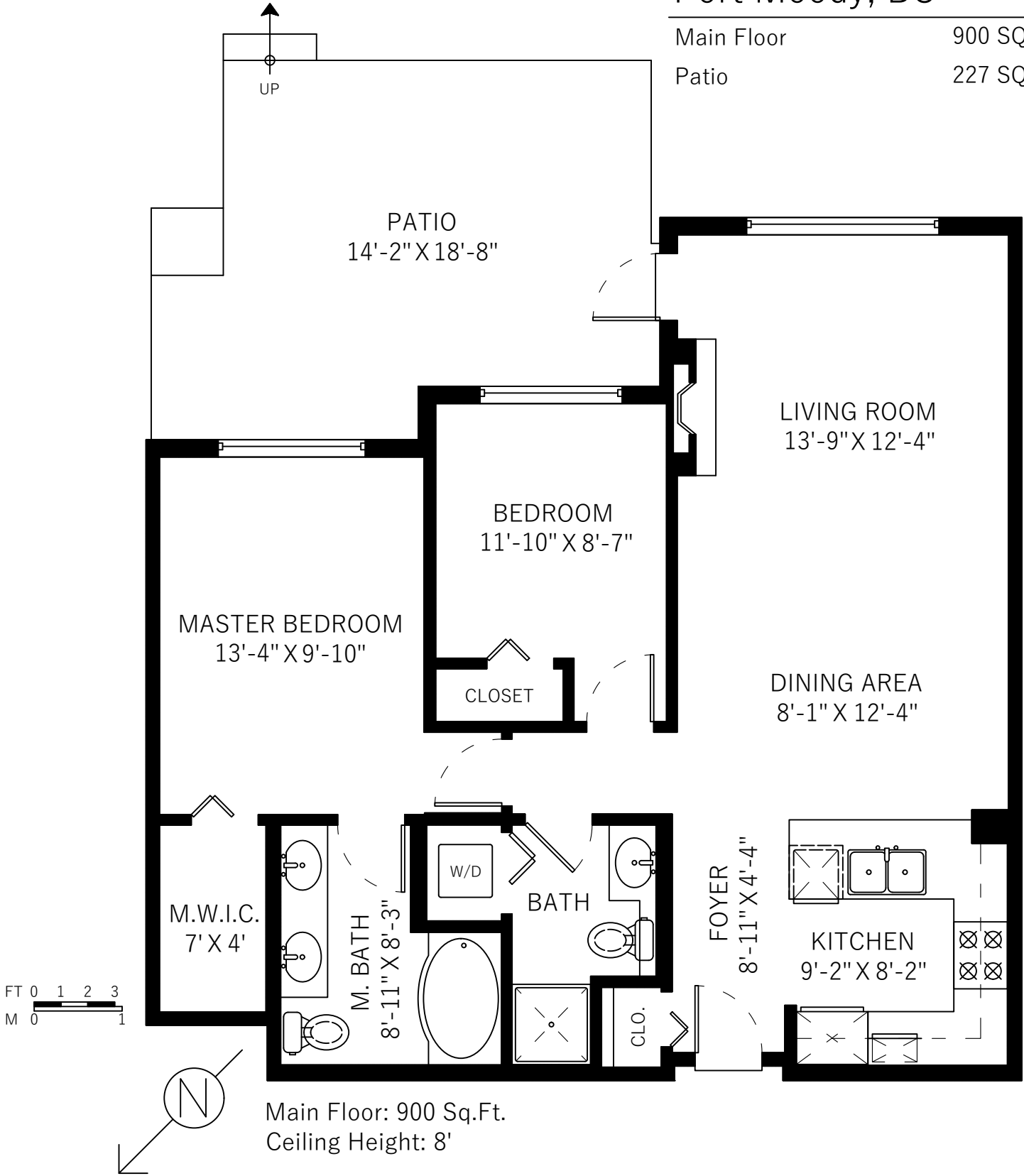


113-700 Klahanie Dr Port Moody, BC

Main Floor	900 SQ.FT.
Patio	227 SQ.FT.



Main Floor: 900 Sq.Ft.
Ceiling Height: 8'

Floor plan not suitable for architectural/construction purposes. ANSI Z765 standard used to calculate square footage. Buyer to verify.