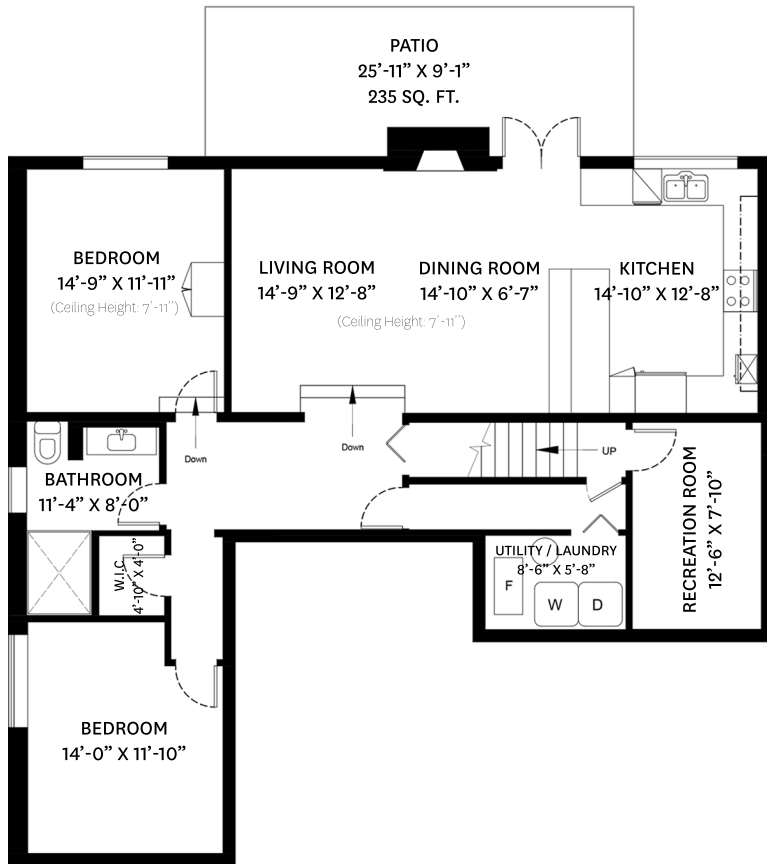
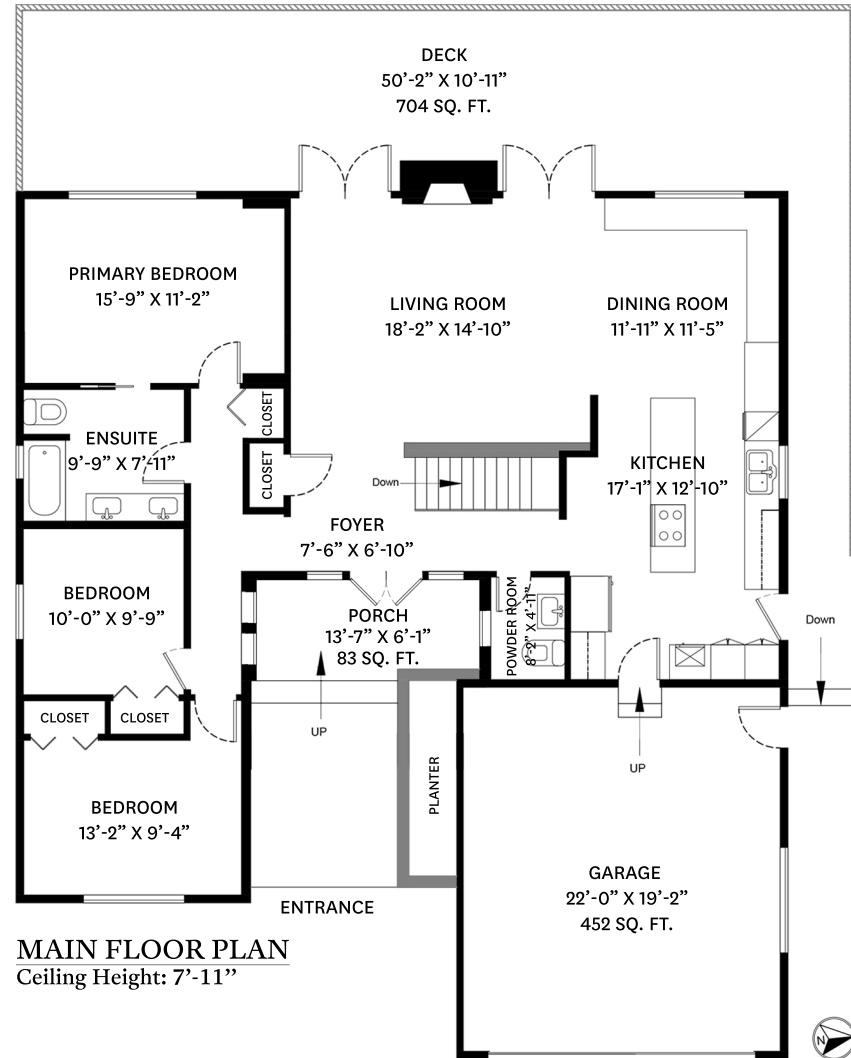


175 APRIL ROAD, PORT MOODY, BC

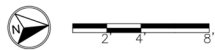
LOWER FLOOR TOTAL: 1,426 SQ. FT. DECK: 704 SQ. FT.
MAIN FLOOR TOTAL: 1,503 SQ. FT. GARAGE: 452 SQ. FT.
TOTAL: 2,929 SQ. FT. PATIO: 235 SQ. FT.
PORCH: 83 SQ. FT.



LOWER FLOOR PLAN
Ceiling Height: 7'-1"



MAIN FLOOR PLAN
Ceiling Height: 7'-11"



Haley MacDougall

778-668-0709

haley@foundationrealestatevancouver.com

OAKWYN REALTY

THE FLOOR PLAN ILLUSTRATION IS NOT SUITABLE FOR CONSTRUCTION/ ARCHITECTURAL PURPOSES.
MEASUREMENTS ARE APPROXIMATE AND MAY NOT BE TO SCALE. E&O INSURED.

floor plan designed by
ishot.ca Enterprises Inc.
604-368-7979
<http://ishot.ca>