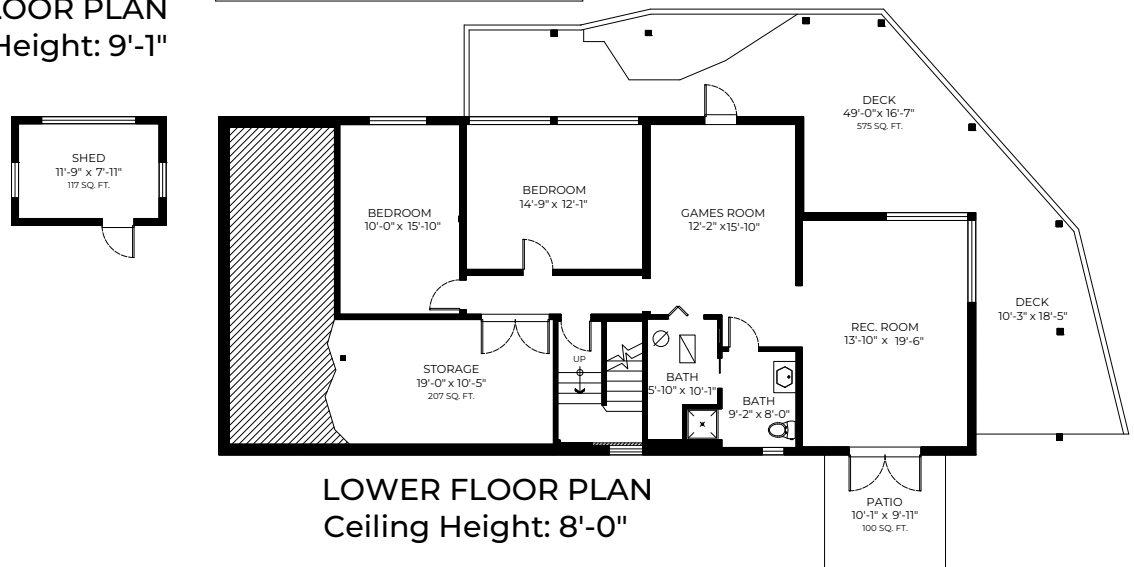
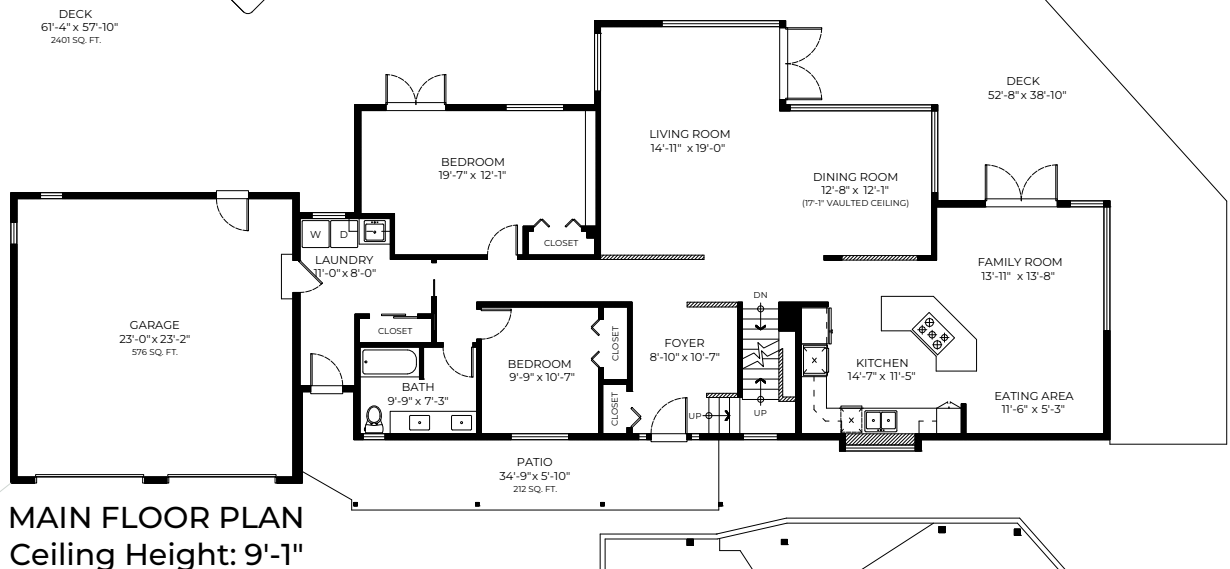
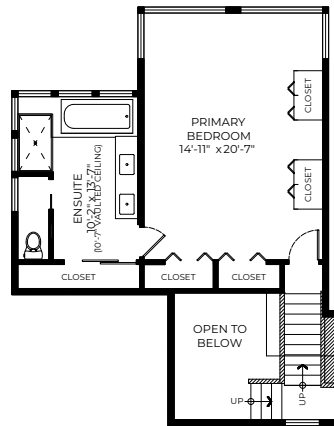


252 Jason Road, Bowen Island, BC

Upper Floor: 609 SQ. FT.
Main Floor: 1831 SQ. FT.
Lower Floor: 1187 SQ. FT.
Total: 3627 SQ. FT.

Main Deck: 2401 SQ. FT.
Main Patio: 212 SQ. FT.
Garage: 576 SQ. FT.
Lower Deck: 575 SQ. FT.
Lower Patio: 100 SQ. FT.
Storage: 207 SQ. FT.
Shed: 117 SQ. FT.

UPPER FLOOR PLAN
Vaulted Ceiling Height: 9'-1"



0 2' 4' 8'

Mary Lynn Machado PREC*
604-220-7085
1marylynn@gmail.com

*PERSONAL REAL ESTATE CORPORATION

ALP Studio
Macdonald Realty

MEASUREMENTS ARE APPROXIMATE AND MAY NOT BE TO SCALE. E&O INSURED.
THE FLOOR PLAN ILLUSTRATION IS NOT SUITABLE FOR CONSTRUCTION/ARCHITECTURAL PURPOSES.