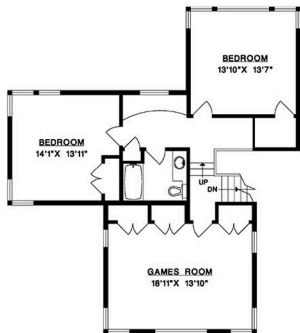


361 FOREST RIDGE ROAD, BOWEN ISLAND

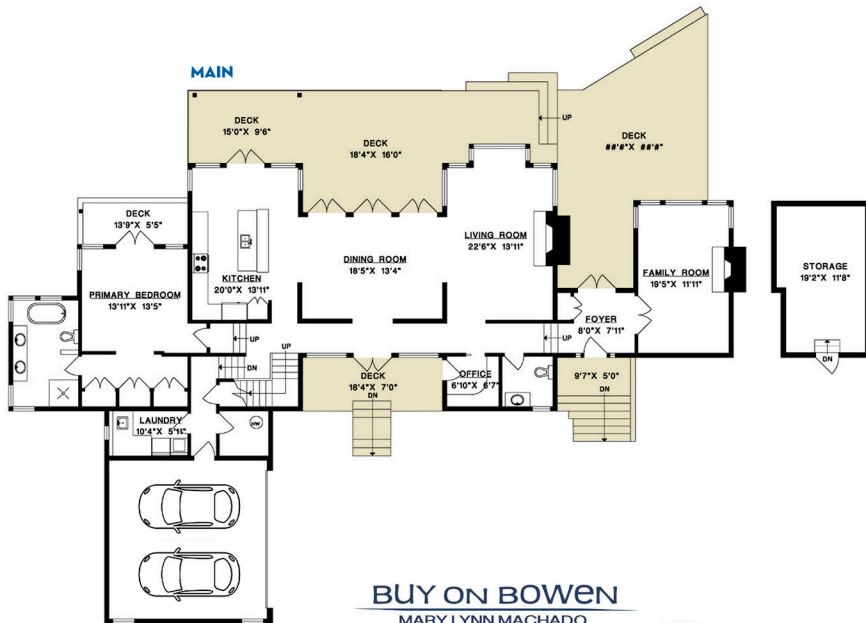
MAIN FLOOR 2,306 SQ.FT.
UPPER FLOOR 1,020 SQ.FT.
TOTAL 3,326 SQ.FT.

GARAGE 473 SQ.FT.
STORAGE 256 SQ.FT.
DECKS 1,317 SQ.FT.

UPPER



MAIN



BUY ON BOWEN

MARY LYNN MACHADO
 PERSONAL REAL ESTATE CORPORATION

buyonbowen.com  604.220.7085


 REALTOR
 604 909 6229

1" = 6'
 SCALE