

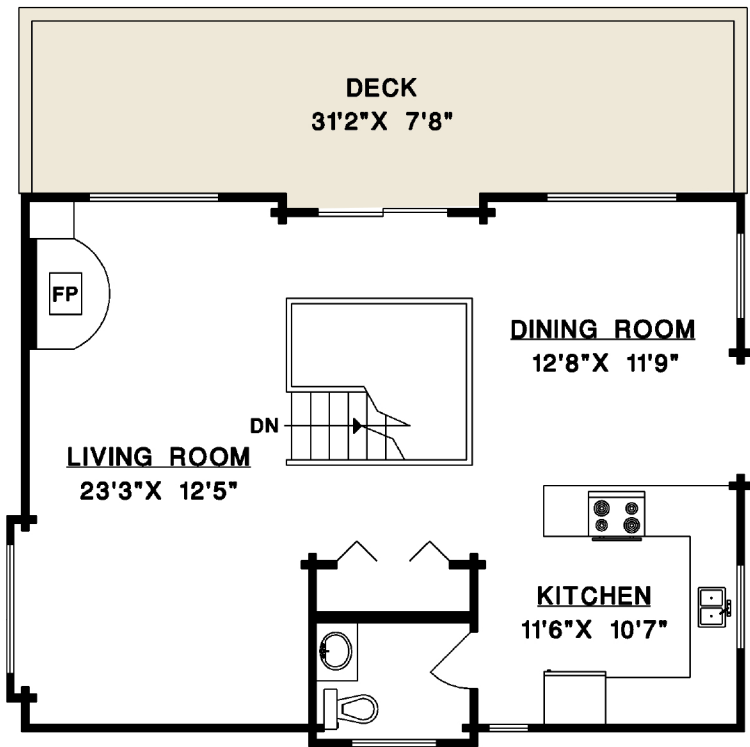
1684 WHITESAILS DRIVE
BOWEN ISLAND

MAIN FLOOR	777 SQ.FT.
LOWER FLOOR	756 SQ.FT.
BOTTOM FLOOR	186 SQ.FT.
TOTAL	1,719 SQ.FT.
GUEST SUITE	429 SQ.FT.
GARAGE	429 SQ.FT.
DECKS	465 SQ.FT.

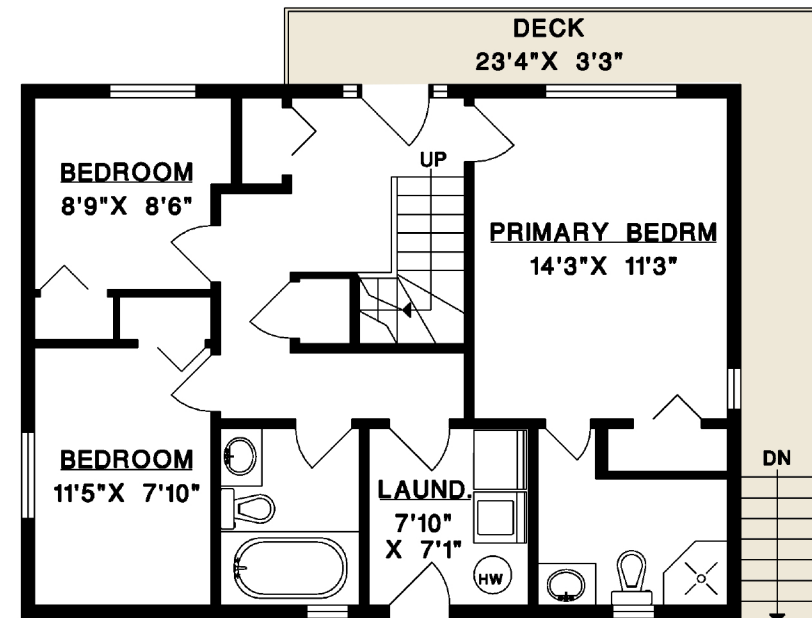
BUY ON BOWEN

MARY LYNN MACHADO
PERSONAL REAL ESTATE CORPORATION

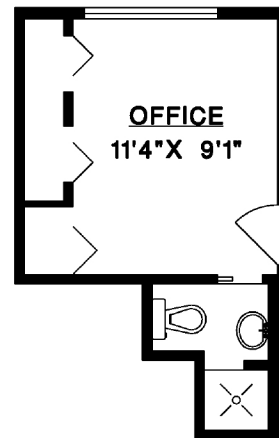
buyonbowen.com  604.220.7085



MAIN FLOOR



LOWER FLOOR



BOTTOM FLOOR

