

1105 MILLER ROAD
BOWEN ISLAND

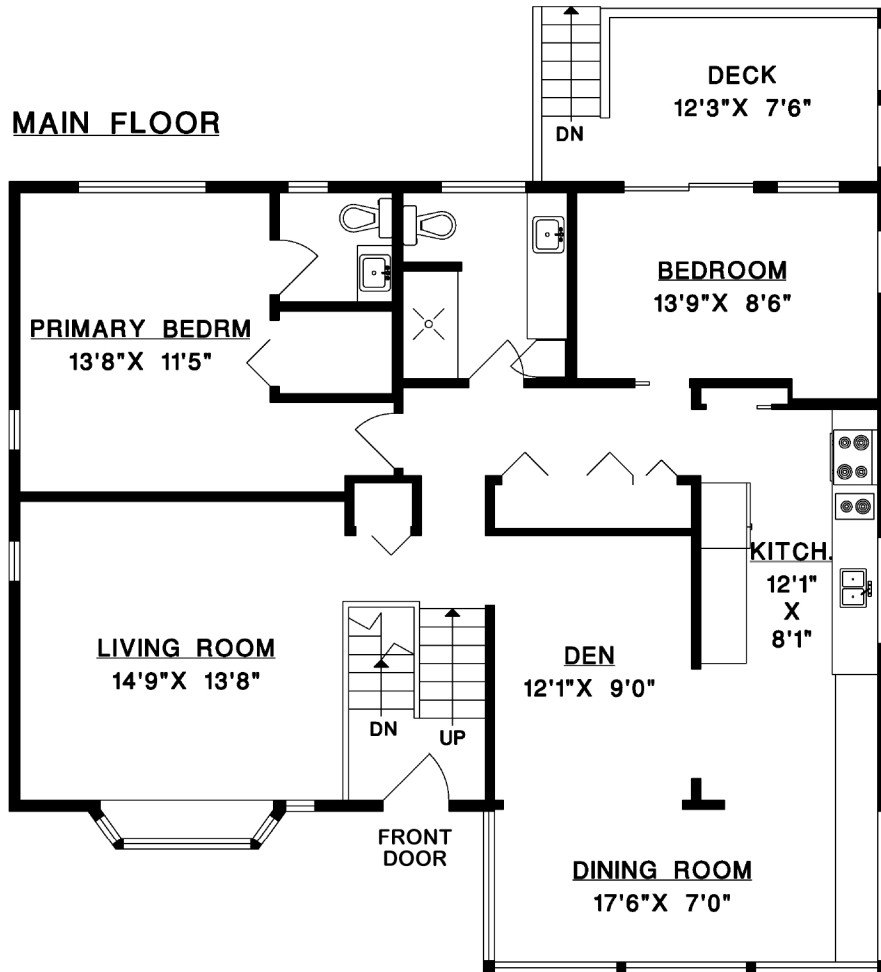
MAIN FLOOR	1,306 SQ.FT.
LOWER FLOOR	797 SQ.FT.
TOTAL	2,103 SQ.FT.
GARAGE	390 SQ.FT.
DECK	114 SQ.FT.

BUY ON BOWEN

MARY LYNN MACHADO
PERSONAL REAL ESTATE CORPORATION

buyonbowen.com  604.220.7085

MAIN FLOOR



LOWER FLOOR

