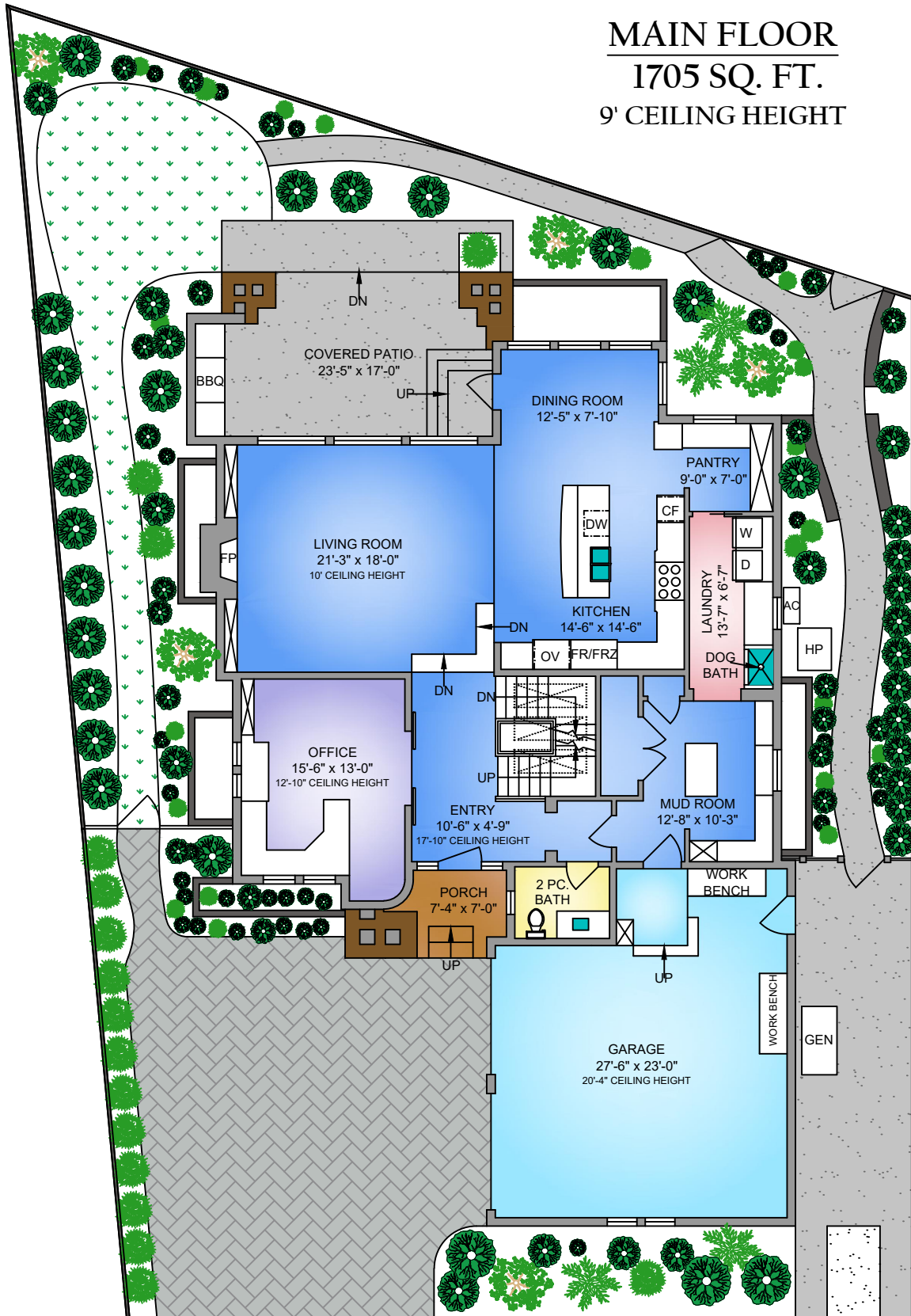


MAIN FLOOR
1705 SQ. FT.
9' CEILING HEIGHT

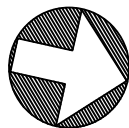


ENGEL & VÖLKERS
LEBLANC · PIERCY GROUP



250-884-9753
 matt@propermeasure.com
 www.propermeasure.com

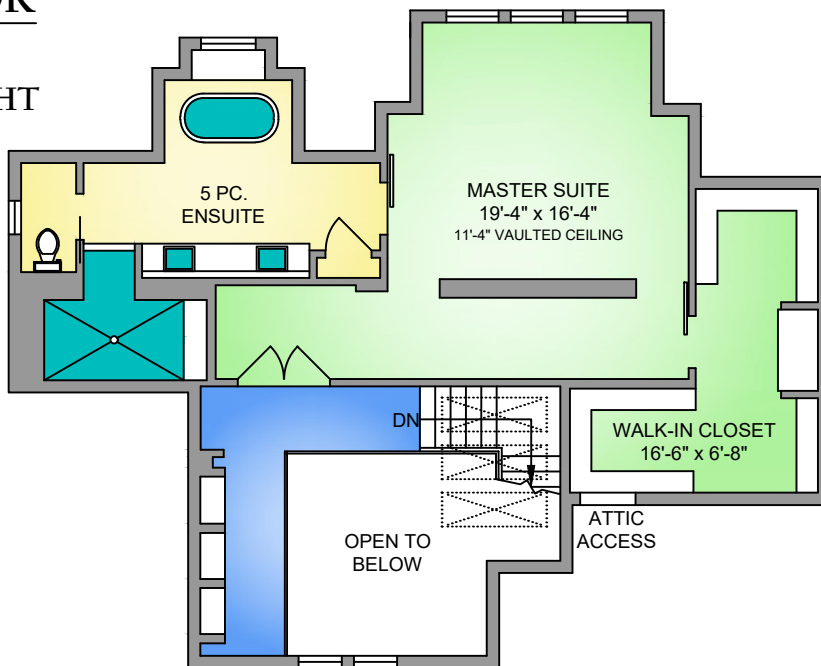
NORTH



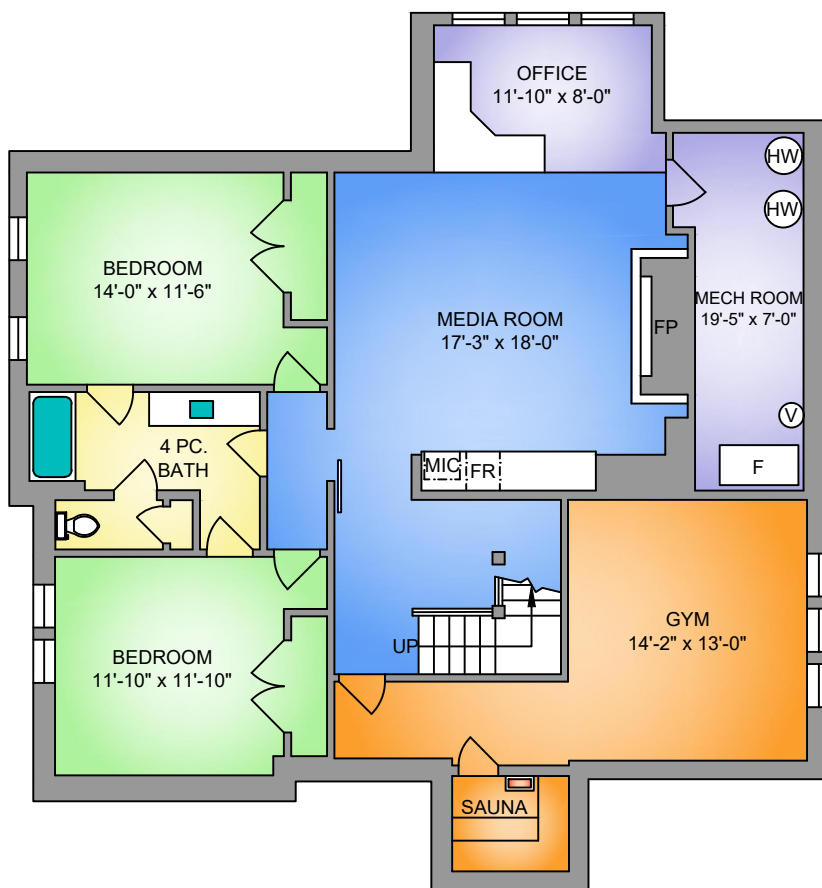
0' 5' 10'
SCALE

| 1319 CHAMPIONS COURT MARY 4, 2022 | | | |
|--------------------------------------------------------------------------------------------------------------------------|----------------|------------|--------------|
| PREPARED FOR THE EXCLUSIVE USE OF LEBLANC · PIERCY GROUP PLANS MAY NOT BE 100% ACCURATE, IF CRITICAL BUYER TO VERIFY. | | | |
| FLOOR | AREA (SQ. FT.) | | |
| | FINISHED | GARAGE | DECK / PATIO |
| MAIN | 1705 | 625 | 345 |
| UPPER | 963 | - | - |
| LOWER | 1687 | - | - |
| TOTAL | 4355 | 625 | 345 |

UPPER FLOOR
963 SQ. FT.
8' CEILING HEIGHT



LOWER FLOOR
1687 SQ. FT.
9' CEILING HEIGHT

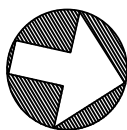


ENGEL & VÖLKERS
LEBLANC · PIERCY GROUP



250-884-9753
 matt@propermeasure.com
 www.propermeasure.com

NORTH



0' 5' 10'
SCALE

| 1319 CHAMPIONS COURT MARY 4, 2022 | | | |
|--------------------------------------------------------------------------------------------------------------------------|----------------|------------|--------------|
| PREPARED FOR THE EXCLUSIVE USE OF LEBLANC · PIERCY GROUP PLANS MAY NOT BE 100% ACCURATE, IF CRITICAL BUYER TO VERIFY. | | | |
| FLOOR | AREA (SQ. FT.) | | |
| | FINISHED | GARAGE | DECK / PATIO |
| MAIN | 1705 | 625 | 345 |
| UPPER | 963 | - | - |
| LOWER | 1687 | - | - |
| TOTAL | 4355 | 625 | 345 |