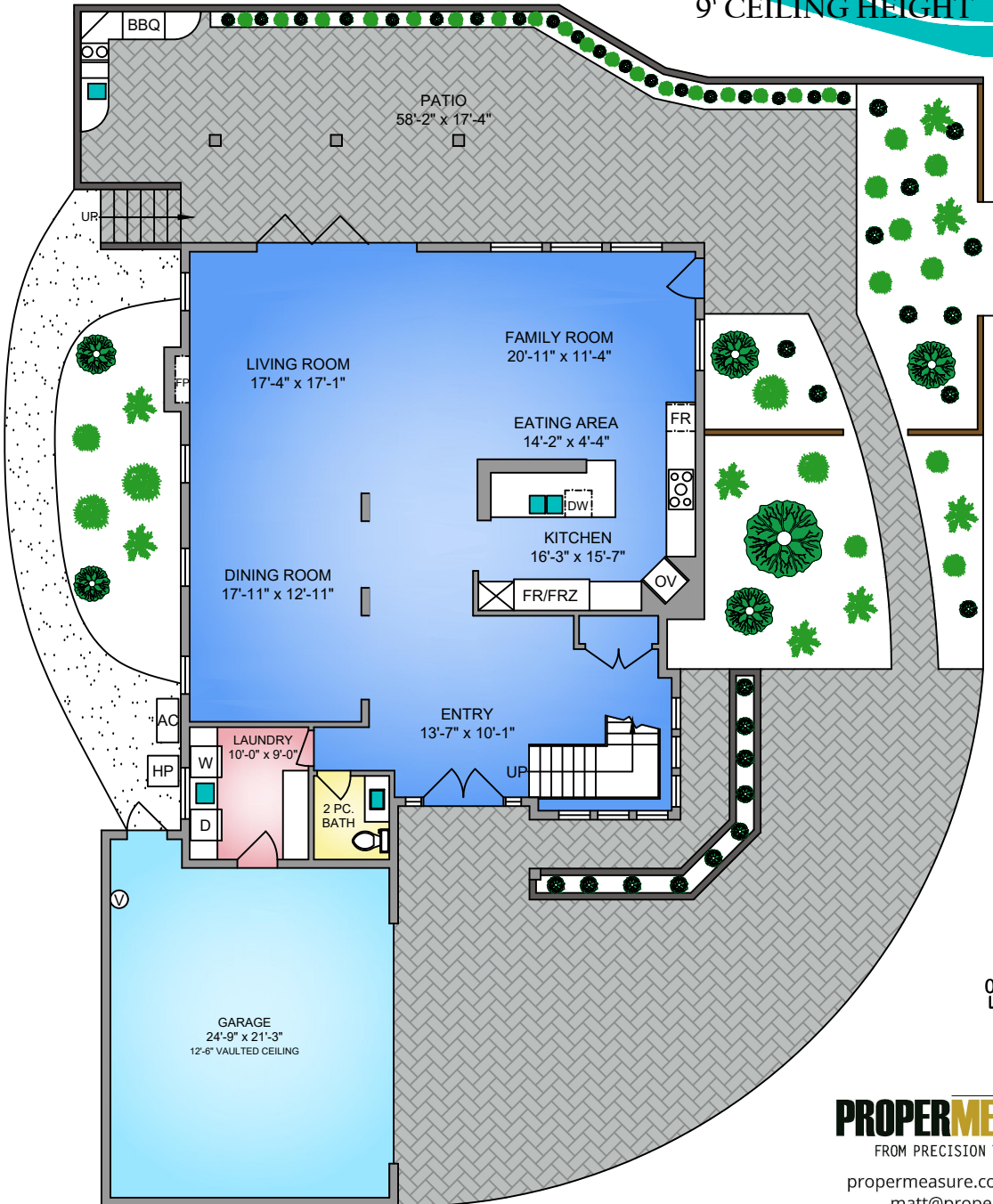
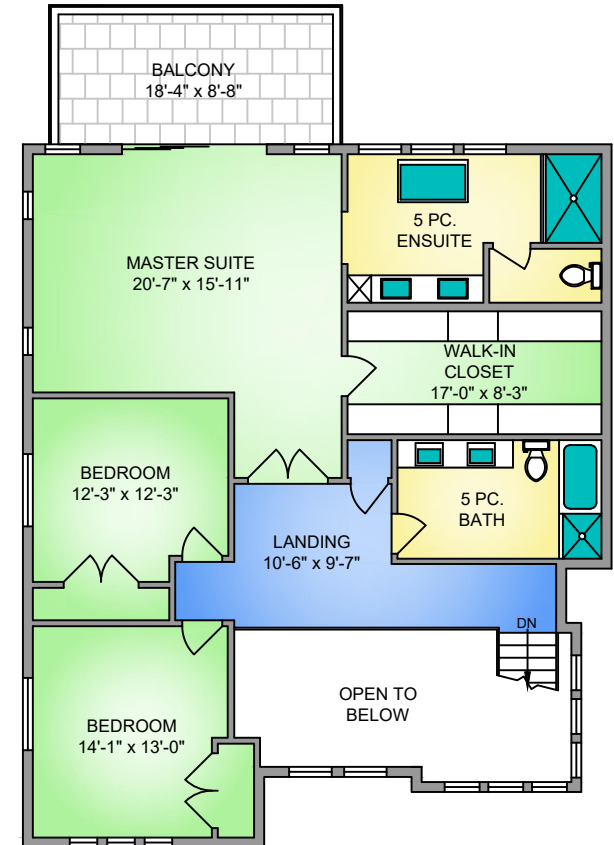


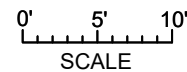
MAIN FLOOR
1722 SQ. FT.
 9' CEILING HEIGHT



UPPER FLOOR
1518 SQ. FT.
 9' CEILING HEIGHT



NORTH



2365 TRYON ROAD
 MAY 12, 2020
 PREPARED FOR THE EXCLUSIVE USE OF LEBLANC • PIERCY GROUP
 PLANS MAY NOT BE 100% ACCURATE. IF CRITICAL BUYER TO VERIFY.

FLOOR	AREA (SQ. FT.)		
	FINISHED	GARAGE	BALCONY
MAIN	1722	582	939
UPPER	1518	-	159
TOTAL	3240	582	1098