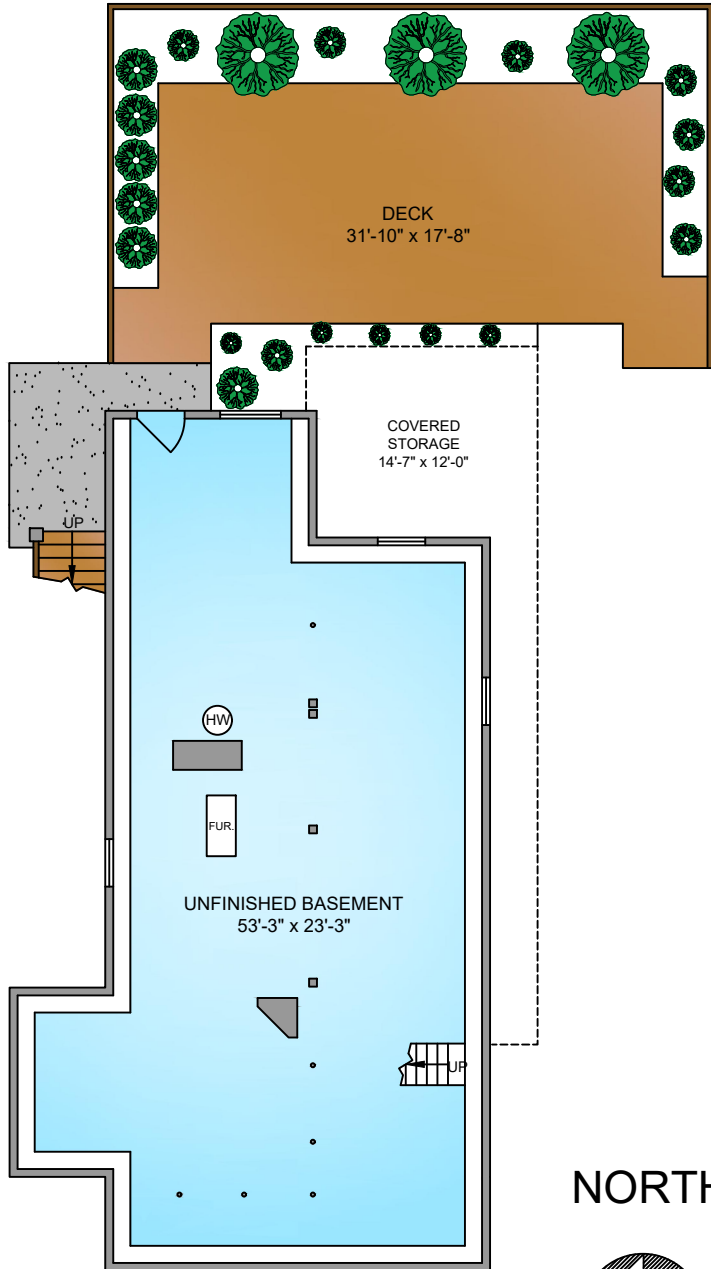


# LOWER FLOOR

1302 SQ. FT.

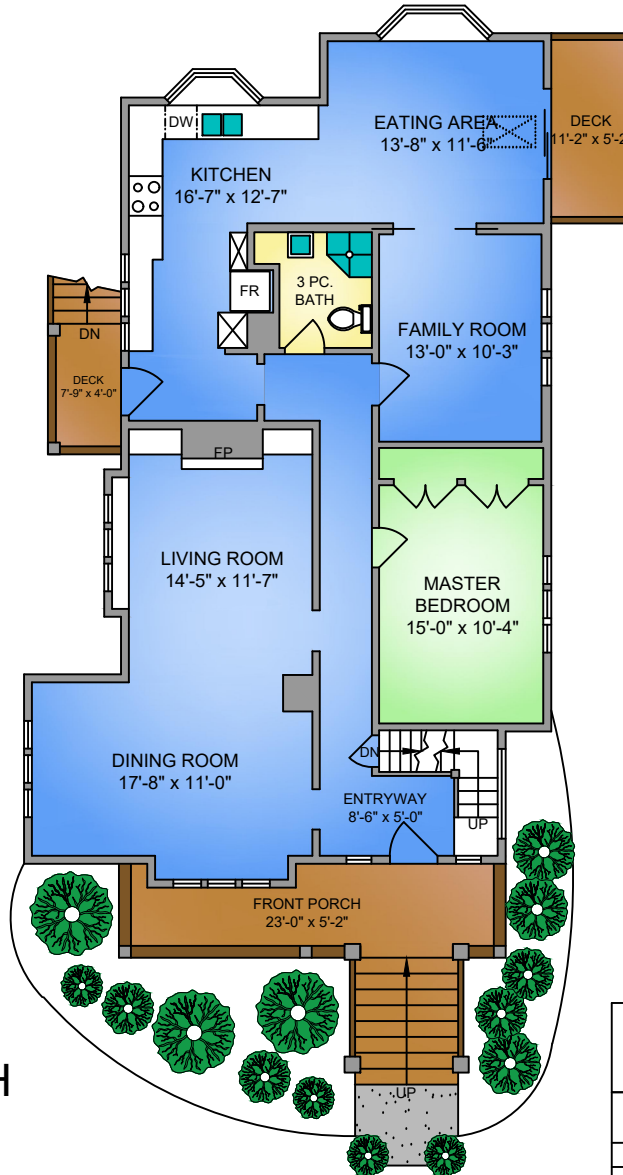
6' CEILING HEIGHT



# MAIN FLOOR

1463 SQ. FT.

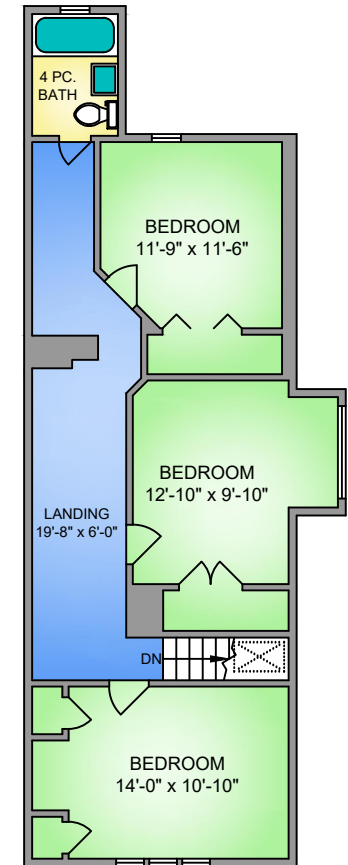
8'-8" CEILING HEIGHT



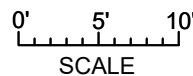
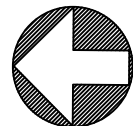
# UPPER FLOOR

871 SQ. FT.

4'-9" - 7'-3" CEILING HEIGHT



NORTH



1285 MONTEREY AVENUE

MARCH 27, 2019

PREPARED FOR THE EXCLUSIVE USE OF THE LEBLANC - PIERCY GROUP  
PLANS MAY NOT BE 100% ACCURATE, IF CRITICAL BUYER TO VERIFY.

FLOOR	AREA (SQ. FT.)		
	FINISHED	UNFINISHED	DECK / PATIO
MAIN	1463	-	199
UPPER	871	-	-
LOWER	-	1302	528
<b>TOTAL</b>	<b>2334</b>	<b>1302</b>	<b>727</b>