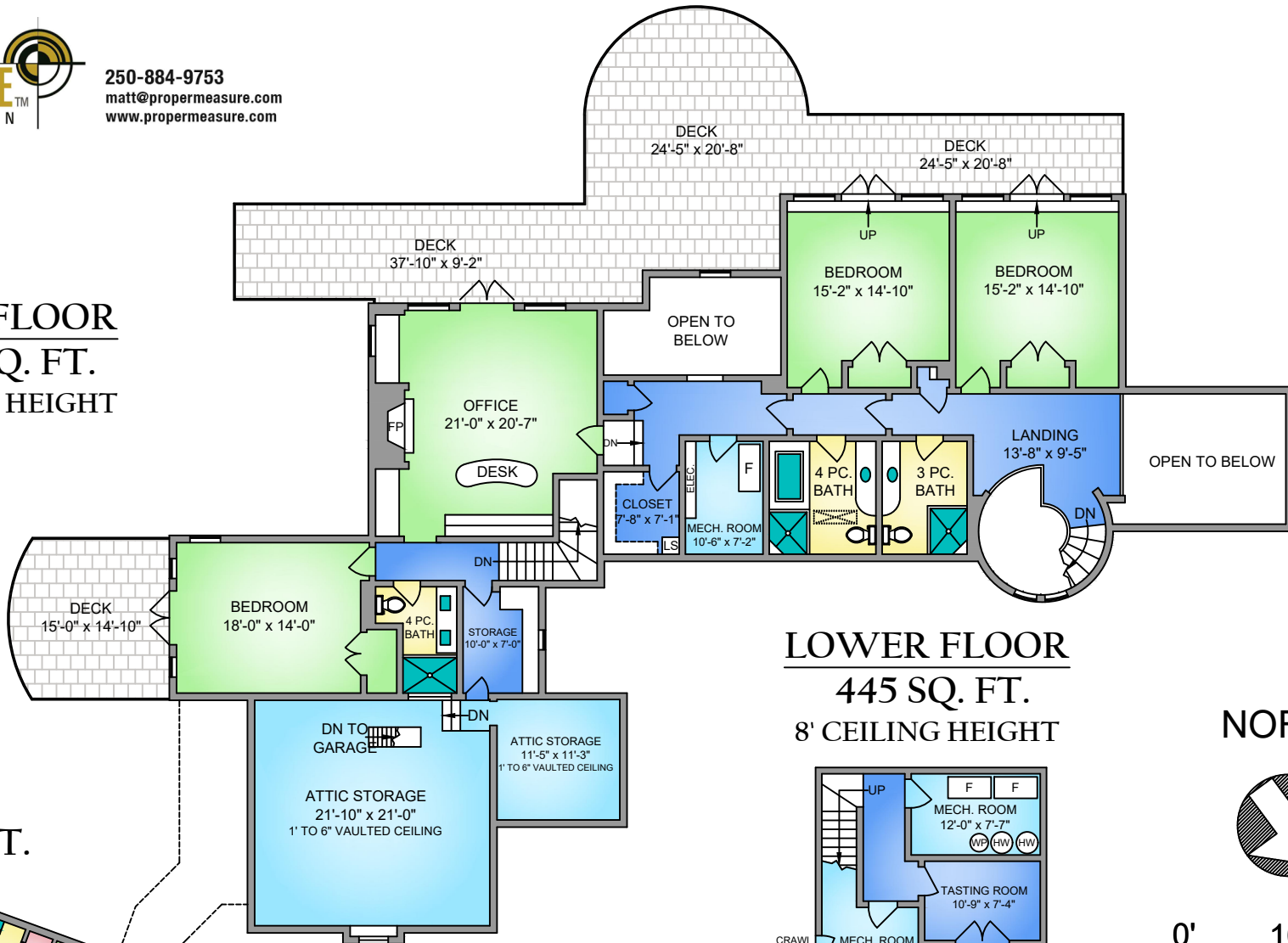
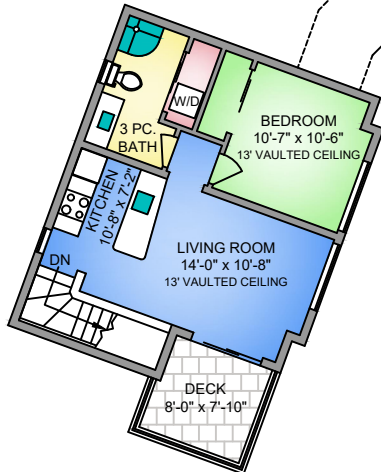




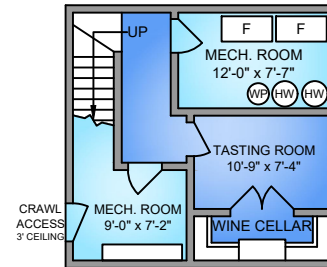
**UPPER FLOOR**  
2437 SQ. FT.  
9' CEILING HEIGHT



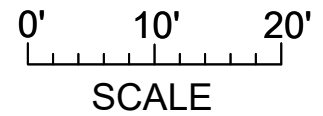
**SUITE**  
626 SQ. FT.



**LOWER FLOOR**  
445 SQ. FT.  
8' CEILING HEIGHT



NORTH



2795 SEA VIEW ROAD MAY 31, 2019 PREPARED FOR THE EXCLUSIVE USE OF THE LEBLANC · PIERCY GROUP PLANS MAY NOT BE 100% ACCURATE, IF CRITICAL BUYER TO VERIFY.				
FLOOR	AREA (SQ. FT.)			
	FINISHED	ATTIC	GARAGE	DECK / PATIO
LOWER	445	-	-	-
MAIN	6054	-	1050	3317
UPPER	2437	656	-	1175
SUITE	626	-	-	64
TOTAL	9562	656	1050	4556