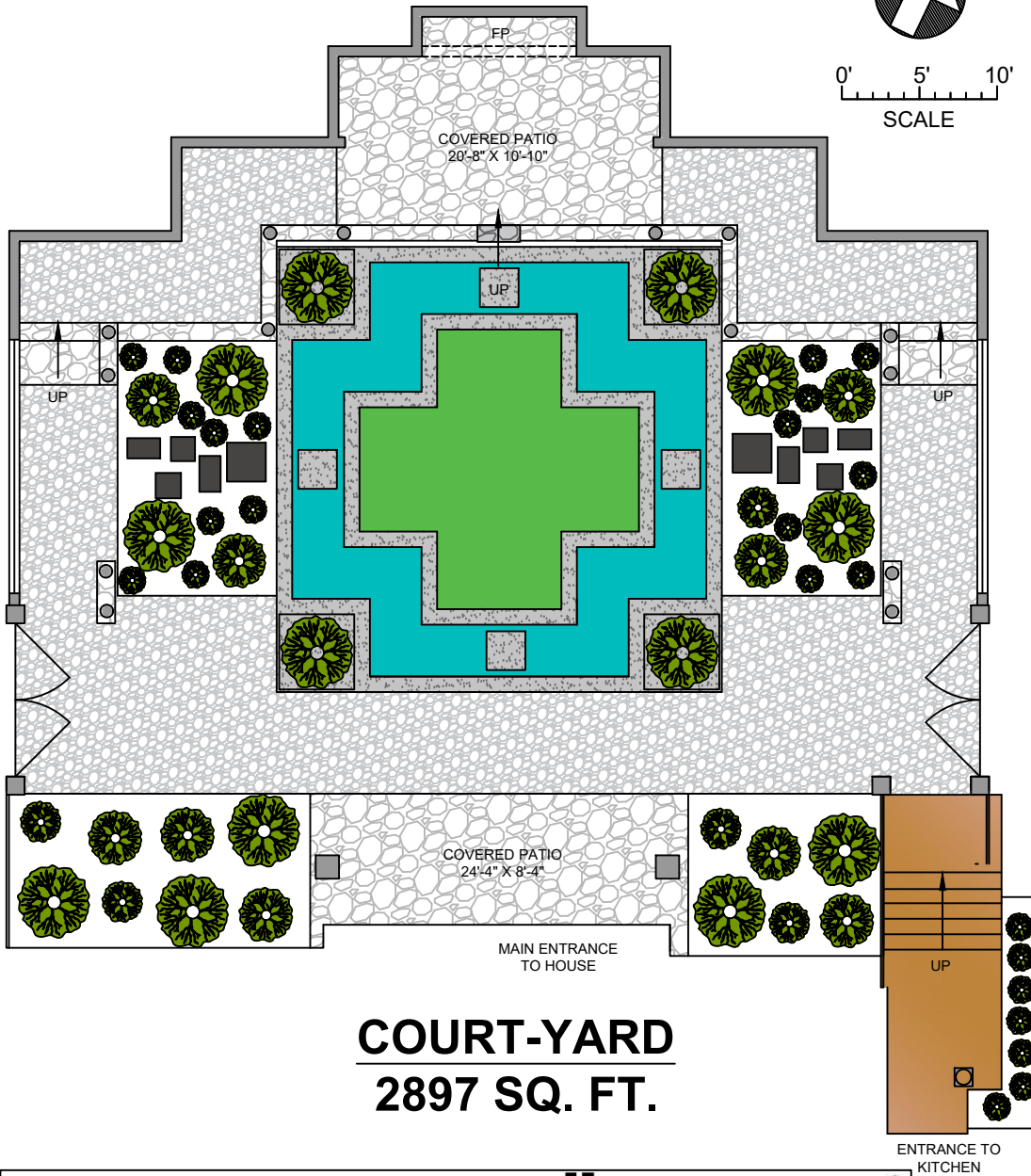


NORTH

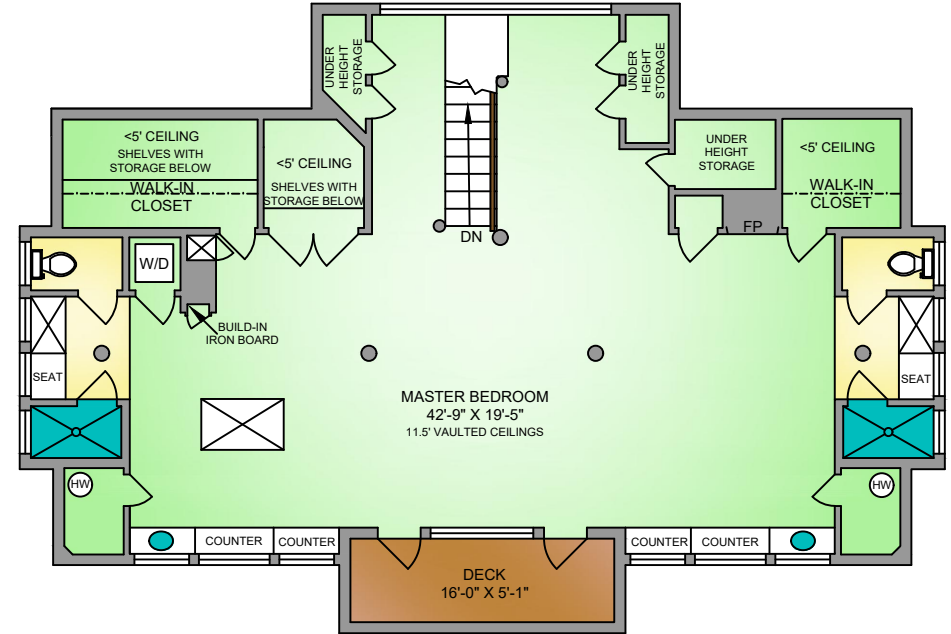


0' 5' 10'
SCALE

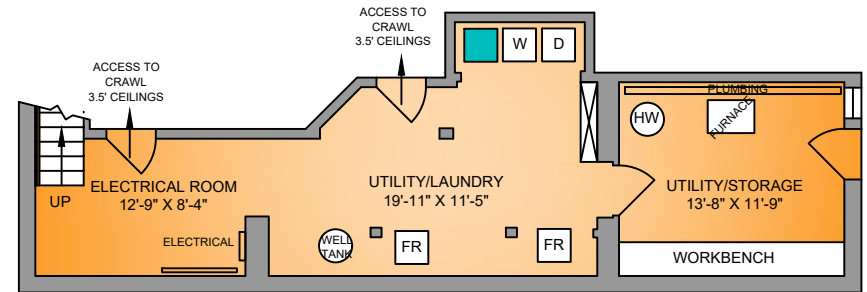


COURT-YARD
2897 SQ. FT.

UPPER FLOOR
1616 SQ. FT.



LOWER FLOOR
647 SQ. FT.



665 WHALETOWN RD
JUNE 18, 2018

Prepared by PROPER MEASURE NORTH ISLAND for the exclusive use of Jim LeBlanc and Scott Piercy
Plans may not be 100% accurate. Buyer must verify any critical measurement.
Private resale or modification of floor plans to a third party by any individual or entity other than Proper Measure North Island is strictly prohibited

FLOOR	AREA (SQ. FT.)			
	FINISHED	UNFINISHED	GARAGE	DECK/COURT-YARD
MAIN	2005	-	1110	4315
UPPER	1616	-	-	81
LOWER/GUEST	1343	-	-	246
TOTAL	4964	-	1110	4642