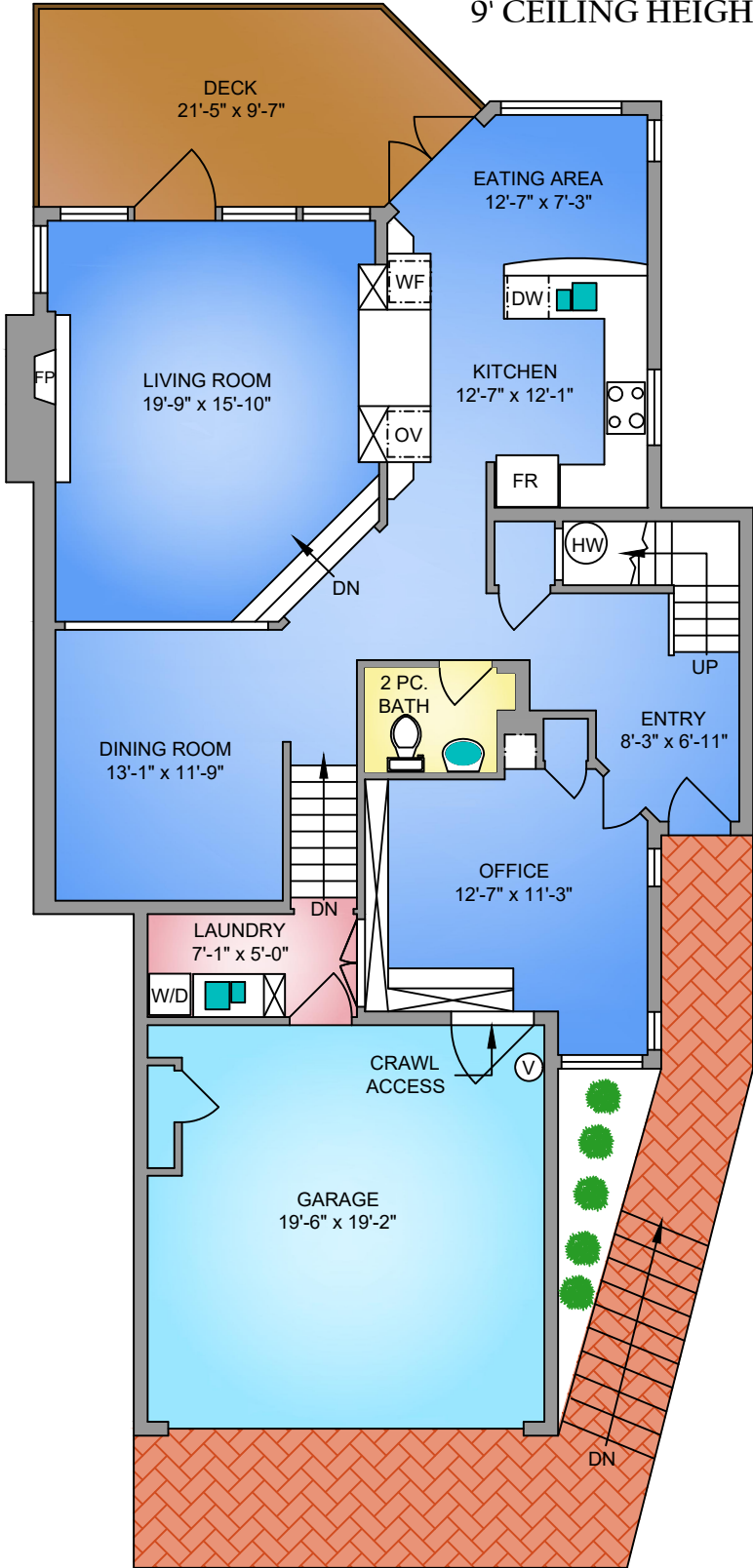
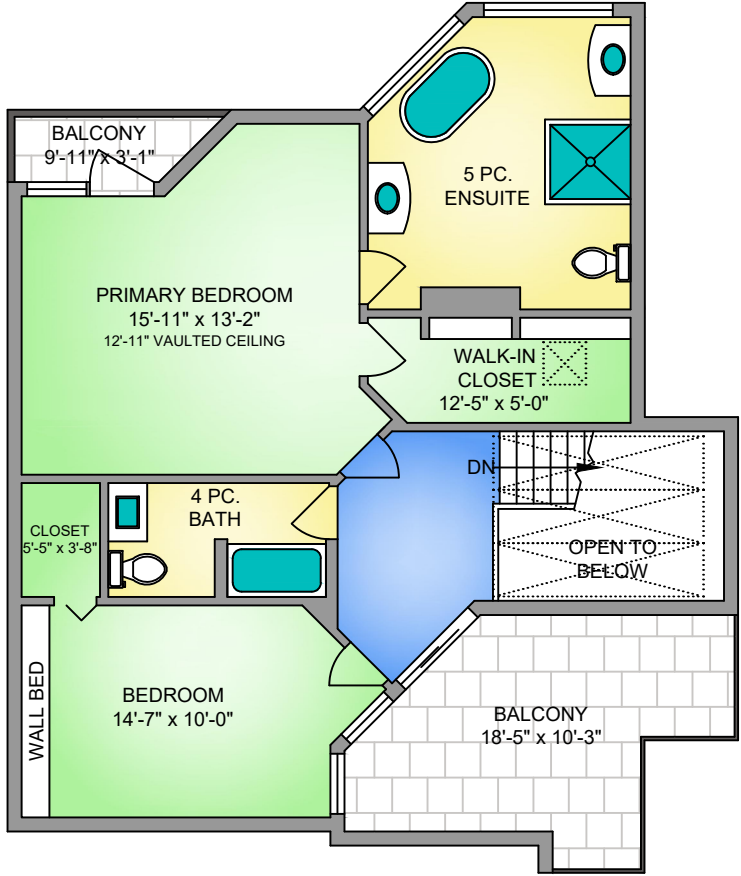


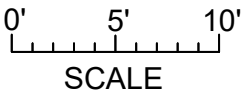
**MAIN FLOOR**  
**1273 SQ. FT.**  
**9' CEILING HEIGHT**



**UPPER FLOOR**  
**910 SQ. FT.**  
**9' CEILING HEIGHT**



NORTH



**ENGEL & VÖLKERS**  
**LEBLANC · PIERCY GROUP**

UNIT 14 - 4771 CORDOVA BAY ROAD  
 MARCH 26, 2021  
 PREPARED FOR THE EXCLUSIVE USE OF LEBLANC & PIERCY GROUP  
 PLANS MAY NOT BE 100% ACCURATE, IF CRITICAL BUYER TO VERIFY.

| FLOOR        | AREA (SQ. FT.) |            |                |
|--------------|----------------|------------|----------------|
|              | FINISHED       | GARAGE     | BALCONY / DECK |
| MAIN         | 1273           | 389        | 182            |
| UPPER        | 910            | -          | 181            |
| <b>TOTAL</b> | <b>2183</b>    | <b>389</b> | <b>363</b>     |



250-884-9753  
 matt@propermeasure.com  
 www.propermeasure.com