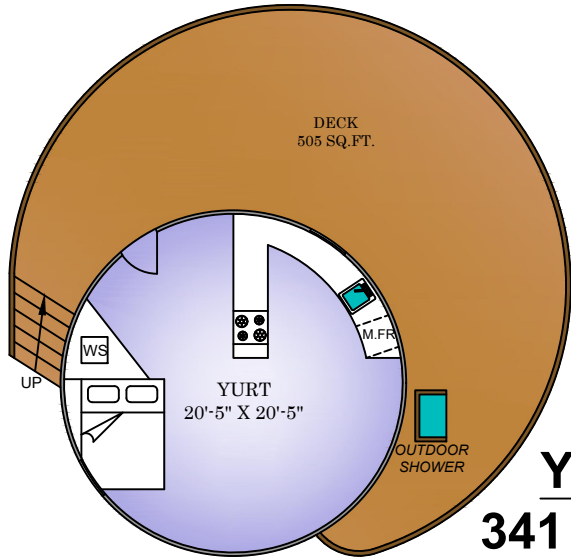


309 SUTIL POINT RD.

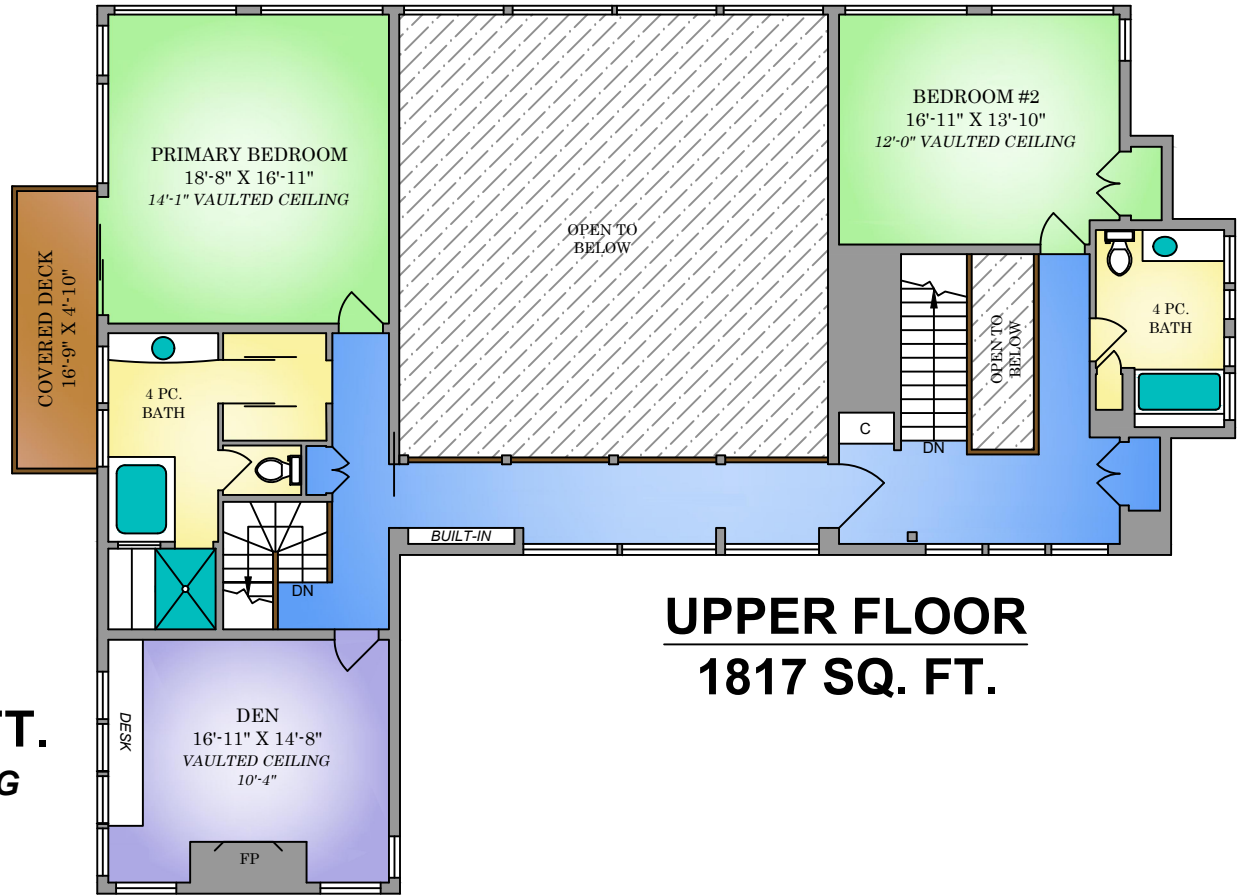
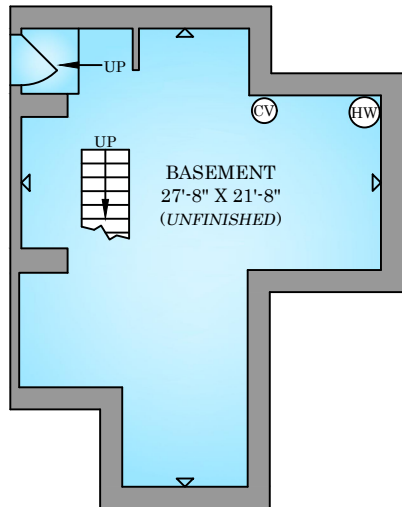
MAIN HOUSE: 4335 SQ. FT.

GUEST HOUSE: 635 SQ. FT.



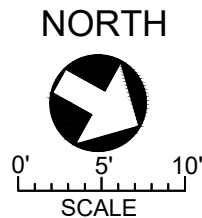
YURT
341 SQ. FT.
11'-9" CEILING

BASEMENT
548 SQ. FT.
7'-10" CEILING



UPPER FLOOR
1817 SQ. FT.

ENGEL & VÖLKERS®
LEBLANC-PIERCY GROUP



309 SUTIL POINT RD. JULY 28, 2021				
Prepared by PROPER MEASURE NORTH ISLAND for the exclusive use of Leblanc Piercy Group Plans may not be 100% accurate. Buyer must verify any critical measurement. Private resale or modification of floor plans to a third party by any individual or entity other than Proper Measure North Island is strictly prohibited.				
FLOOR	AREA (SQ. FT.)			
	FINISHED SQ.FT.	UNFINISHED SQ.FT.	DECK/PATIO	GARAGE/CARPORT
MAIN	2518	-	1860	1023
UPPER	1817	-	89	-
BASEMENT	-	548	-	-
GUEST HOUSE	635	-	-	-
YURT	341	-	505	-
TOTAL	5311	548	2454	1023