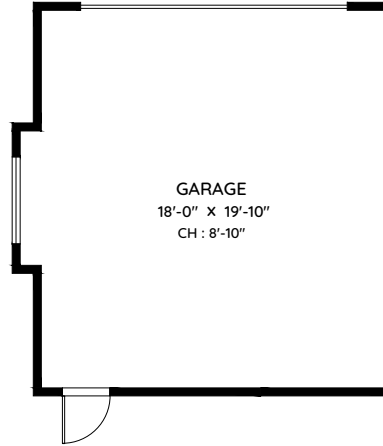
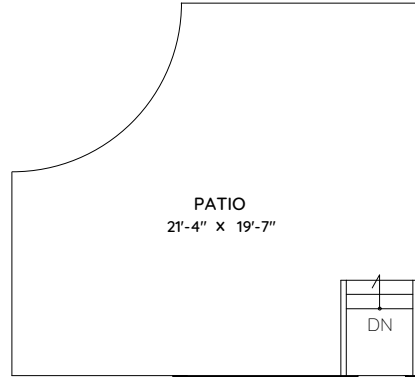


107 173 STREET

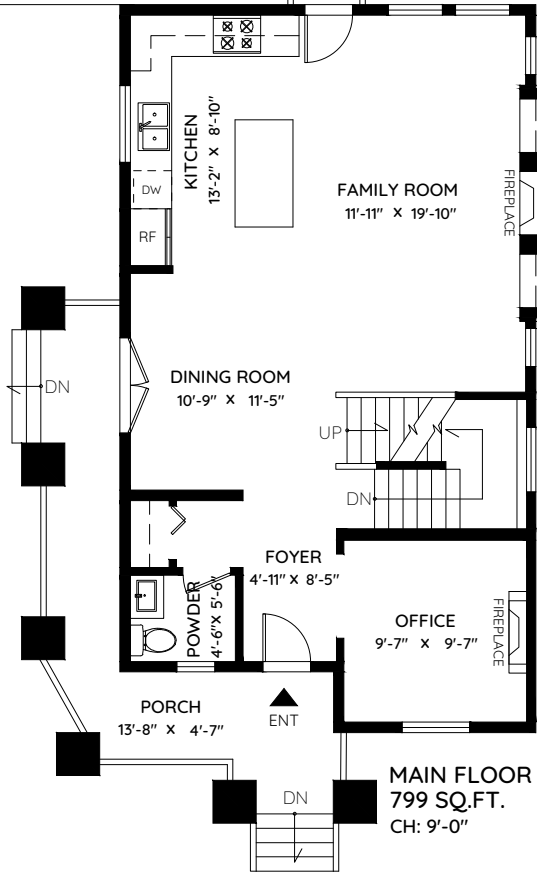
SURREY, BC



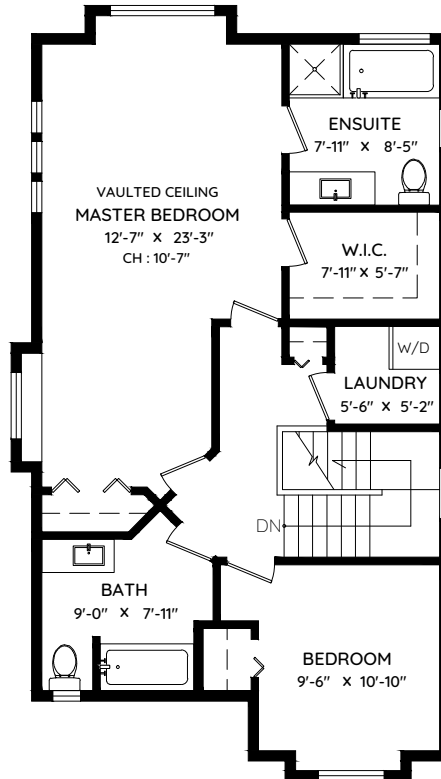
GILBERT
REAL ESTATE SERVICES
Doug & Krista
southsurreyrealtors.com
604.618.6736



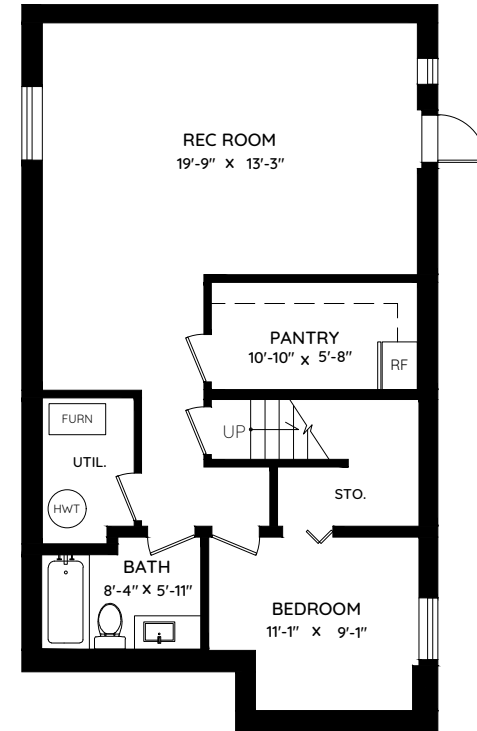
MAIN	799 SQ.FT.	GARAGE	398 SQ.FT.
UPPER	823 SQ.FT.	PORCH	206 SQ.FT.
LOWER	799 SQ.FT.	PATIO	356 SQ.FT.
TOTAL	2,421 SQ.FT.	TOTAL	960 SQ.FT.



MAIN FLOOR
799 SQ.FT.
CH: 9'-0"



UPPER FLOOR
823 SQ.FT.
CH: 8'-1"



LOWER FLOOR
799 SQ.FT.
CH: 7'-9"



0 ft 3 ft 5 ft 10 ft

The floor plan and the measurements are approximate within +/- 2% and are to be used for advertising usage only. May include unfinished area. Not suitable for architectural or construction. E&O Insured