



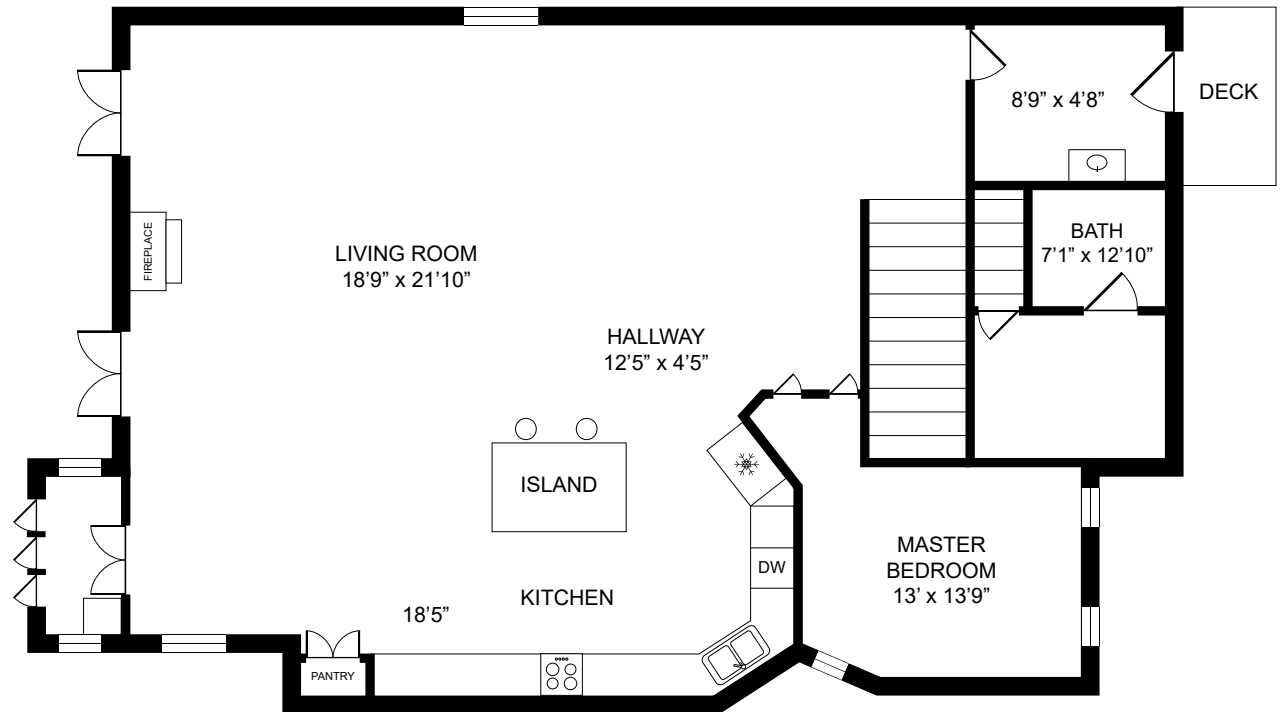
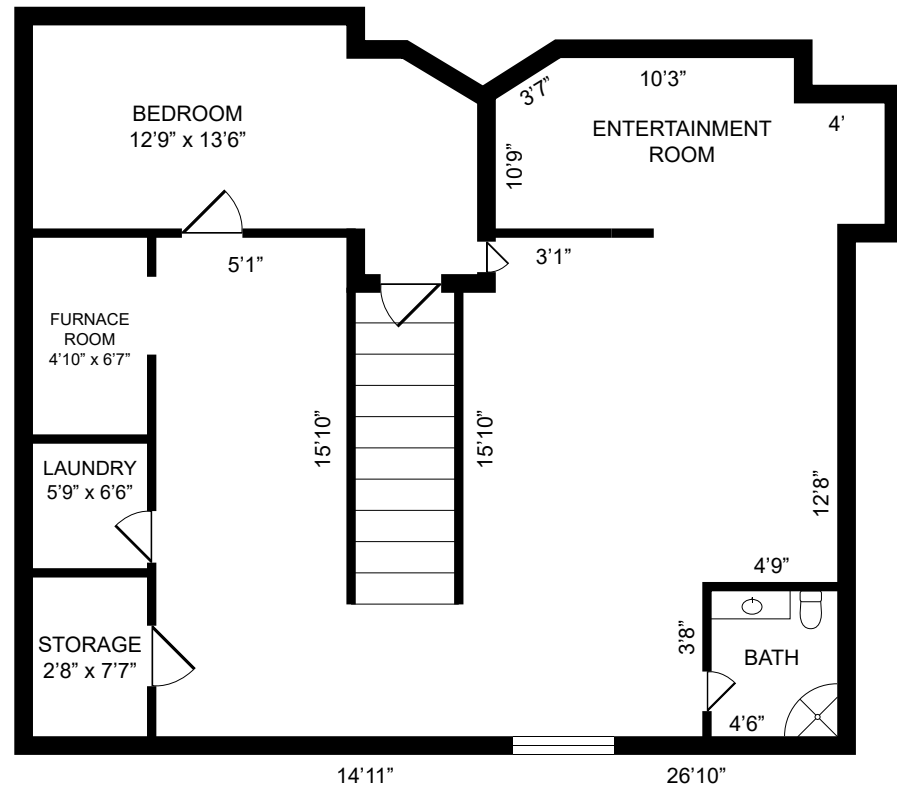
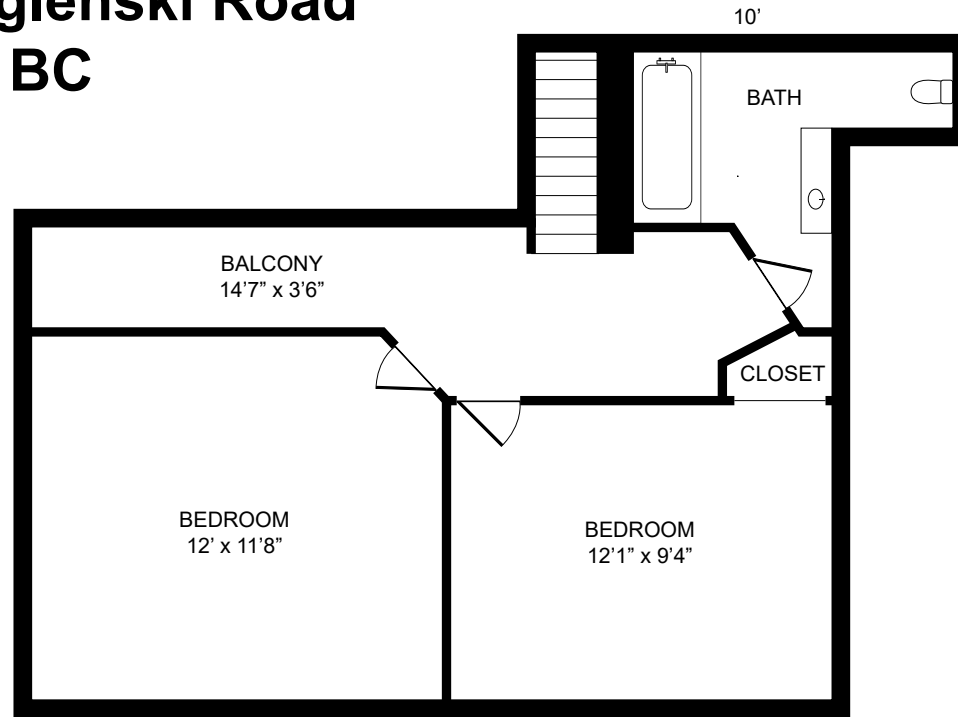
**3060 Figlenski Road
Merritt, BC**

MAIN HOUSE

Jennifer Kightley
250 315-3256
merritthomesforsale.ca

Harley Stephenson PREC*
778 878-0177
harleystephenson.ca

Upstairs:	678 sqft
Main Floor:	1,140 sqft
Basement:	1,140 sqft
Total:	2,958 sqft



BASEMENT

MAIN FLOOR

*Personal Real Estate Corporation

*All measurements are approximate as measured by the listing agents and should be verified by the Buyer.