

# 2512 Dewdney Trunk Rd.

Coquitlam, BC V3H 2E5

Lower Level: 1,154 SQ.FT.

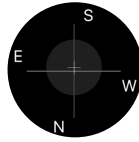
Main Level: 1,230 SQ.FT.

**Total Area: 2,384 SQ.FT.**

Aux. Measurements:

Deck Area: 460 SQ.FT.

Open Garage: 361 SQ.FT.



6

BEDROOMS

4

BATH-ROOMS

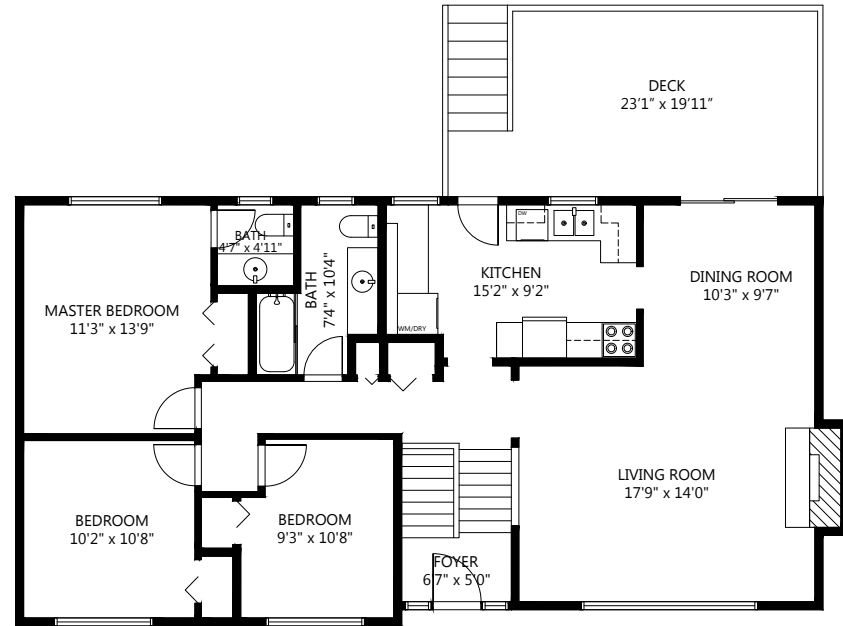
2,384

TOTAL SQ.FT.



Lower Level: 1,154 SQ.FT.

Ceiling Height: 8'0"



Main Level: 1,230 SQ.FT.

Ceiling Height: 8'0"

2512 Dewdney Trunk Rd., Coquitlam, BC V3H 2E5

The floor plan illustration is not suitable for construction/architectural purposes. Measurements are approximate and may not be to scale. Measurements provided by realtor/BC Assessment. This communication is not intended to cause or induce breach of an existing agency agreement

**REDFIN**™

**3D IMMERSIVE**  
Tours Photos Floor Plans

www.3d-immersive.com · 1-866-VAN-PICS