

556 21st St W, North Vancouver, BC V7M 1Z7, Canada

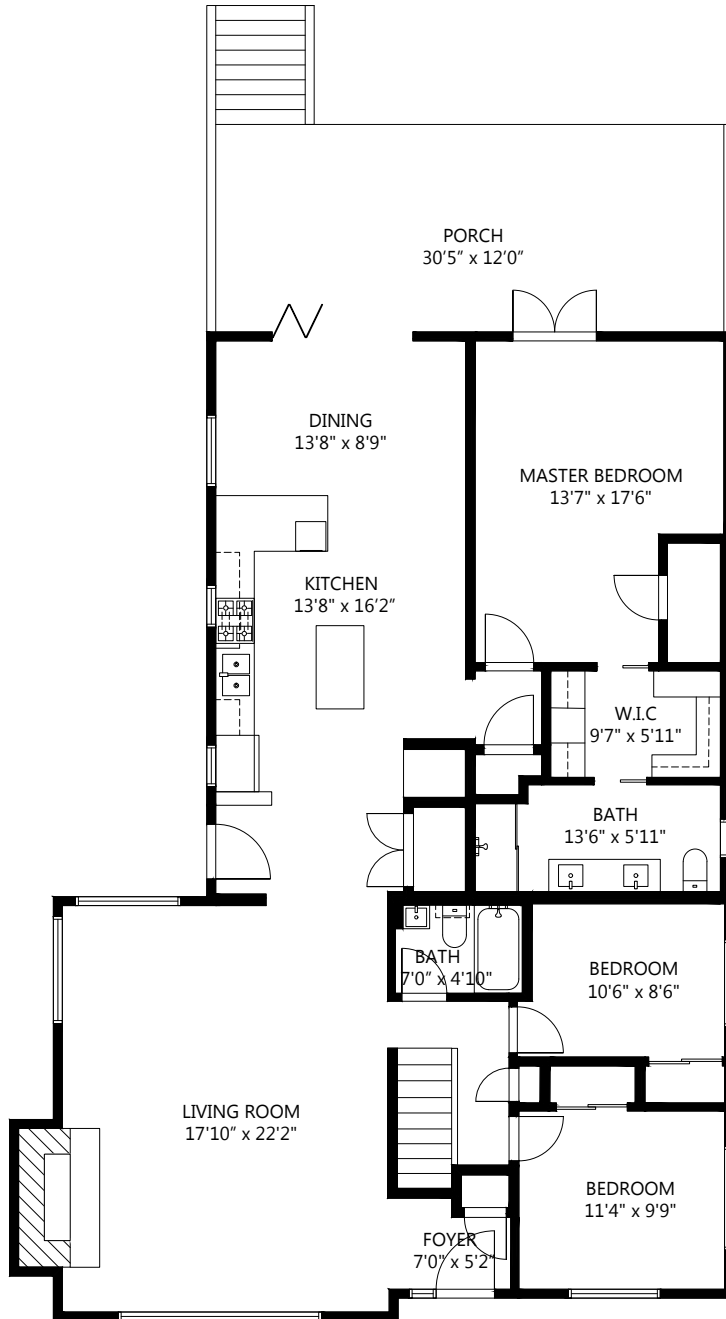
Aux. & Misc Area:

Patio: 365 sq.ft.

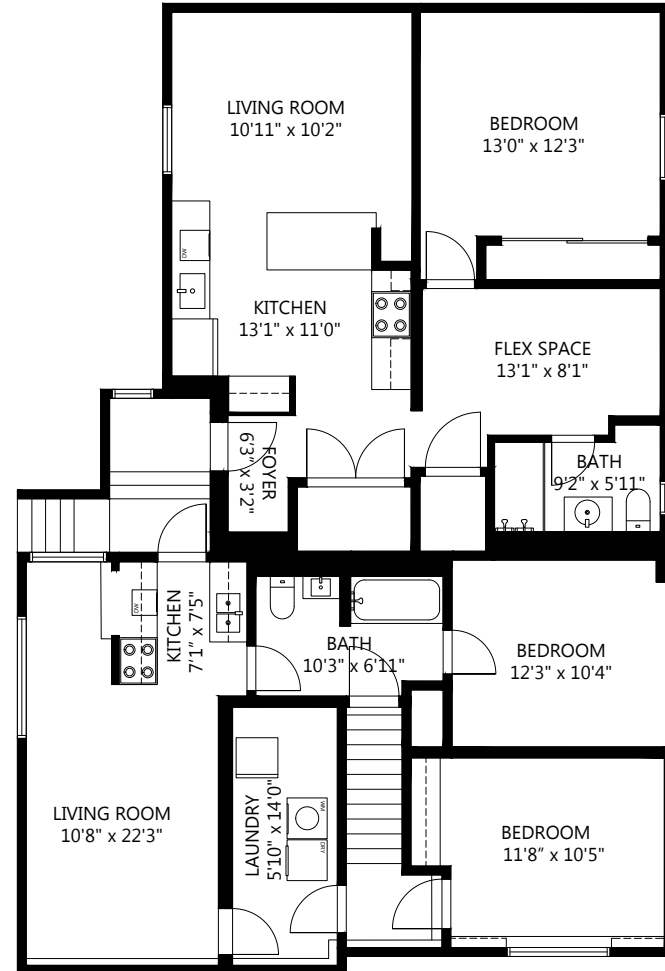
Lower Level: 1,642 sq.ft.

Main Level: 1,742 sq.ft.

Total Area: 3,384 sq.ft.



Main Level: 1,745 sq.ft.
Ceiling Height @ Highest: 8'9"



Lower Level: 1,640 sq.ft.
Ceiling Height @ Highest: 11'4"



REDFIN

556 21st St W, North Vancouver, BC V7M 1Z7, Canada

Floor plans are intended to give a general indication of the proposed layout only. All images and dimensions are not intended to form part any contract or warranty. This announcement is not intended to solicit or induce breach of an existing agency agreement.