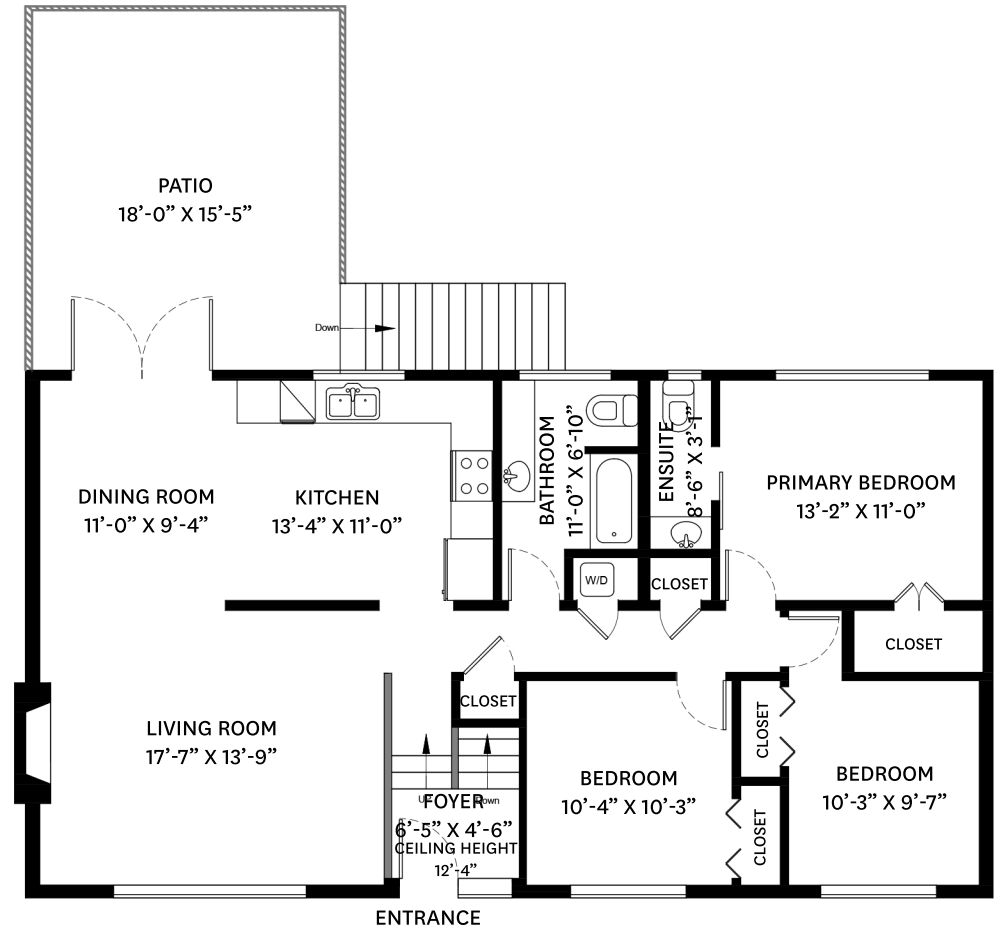


3421 MOUNT SEYMOUR PARKWAY, NORTH VANCOUVER, BC

LOWER FLOOR TOTAL: 963 SQ.FT. **UNFINISHED STORAGE:** 281 SQ.FT.
MAIN FLOOR TOTAL: 1,283 SQ.FT. **PATIO:** 279 SQ.FT.
TOTAL: 2,246 SQ.FT. **CARPORT:** 304 SQ.FT.



LOWER FLOOR PLAN
 Ceiling Height: 7'-8"



MAIN FLOOR PLAN
 Ceiling Height: 7'-11"



KELSIE & MORGAN

REAL ESTATE GROUP

www.KelsieAndMorgan.com

floor plan designed by
 ishot.ca Enterprises Inc.
 604-368-7979
<http://ishot.ca>