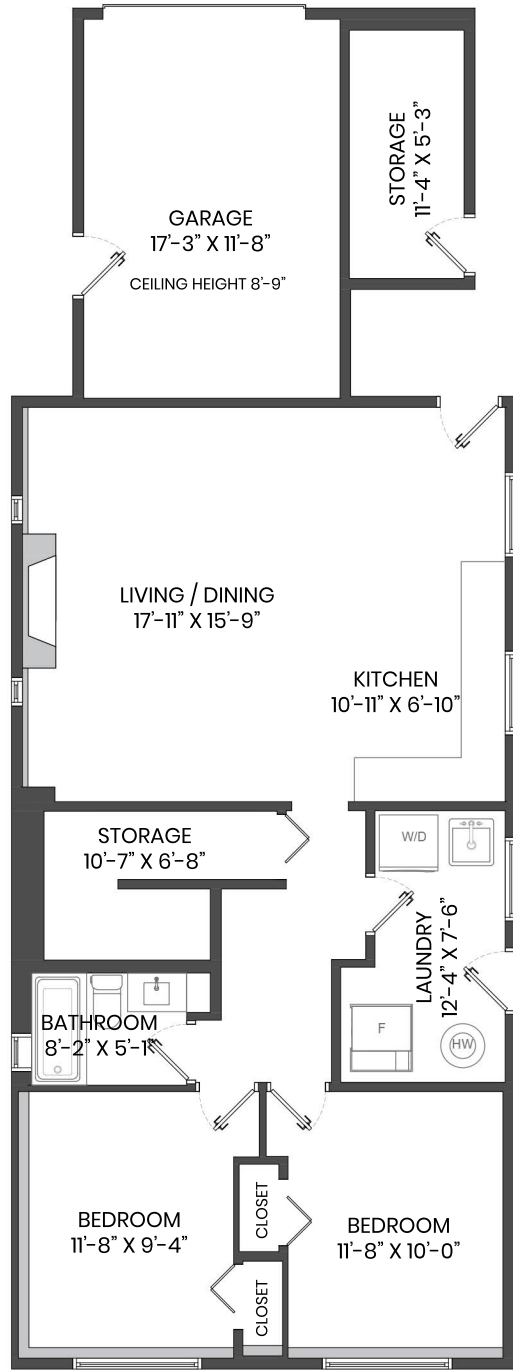
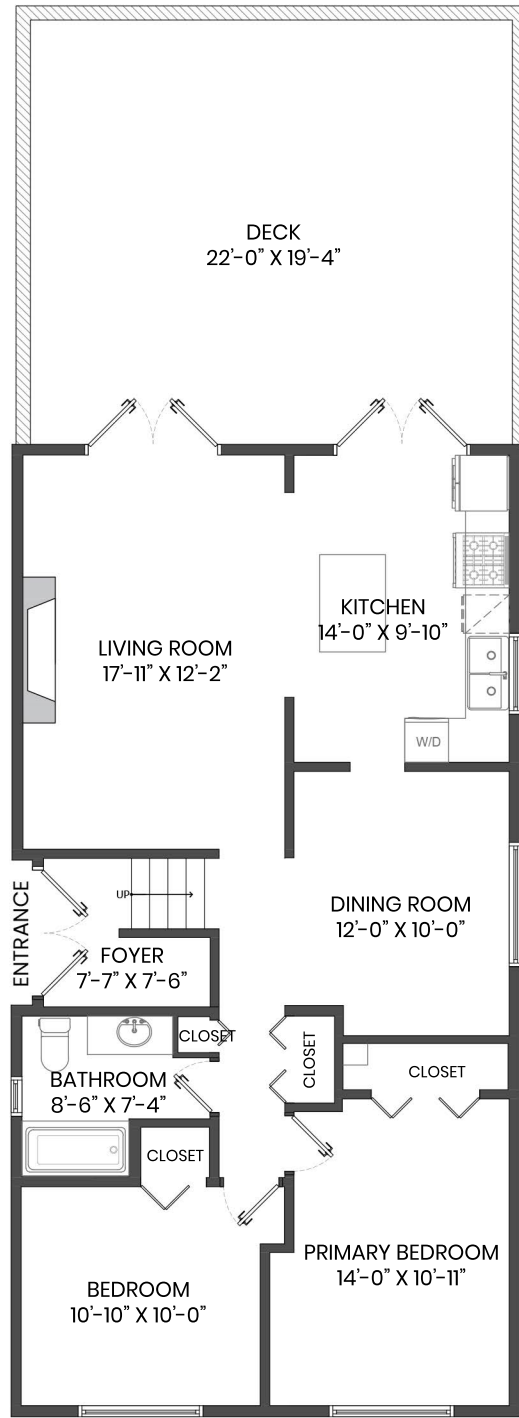


249 27TH STREET EAST, NORTH VANCOUVER, BC

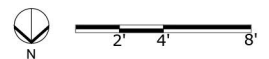
LOWER FLOOR TOTAL: 1,019 SQ.FT. DECK: 425 SQ.FT.
 MAIN FLOOR TOTAL: 1,020 SQ.FT. STORAGE: 73 SQ.FT.
 TOTAL: 2,039 SQ.FT. GARAGE: 224 SQ.FT.



LOWER FLOOR PLAN
 Ceiling Height: 7'-9"



MAIN FLOOR PLAN
 Ceiling Height: 8'-0"



KELSIE & MORGAN

REAL ESTATE GROUP

www.KelsieAndMorgan.com