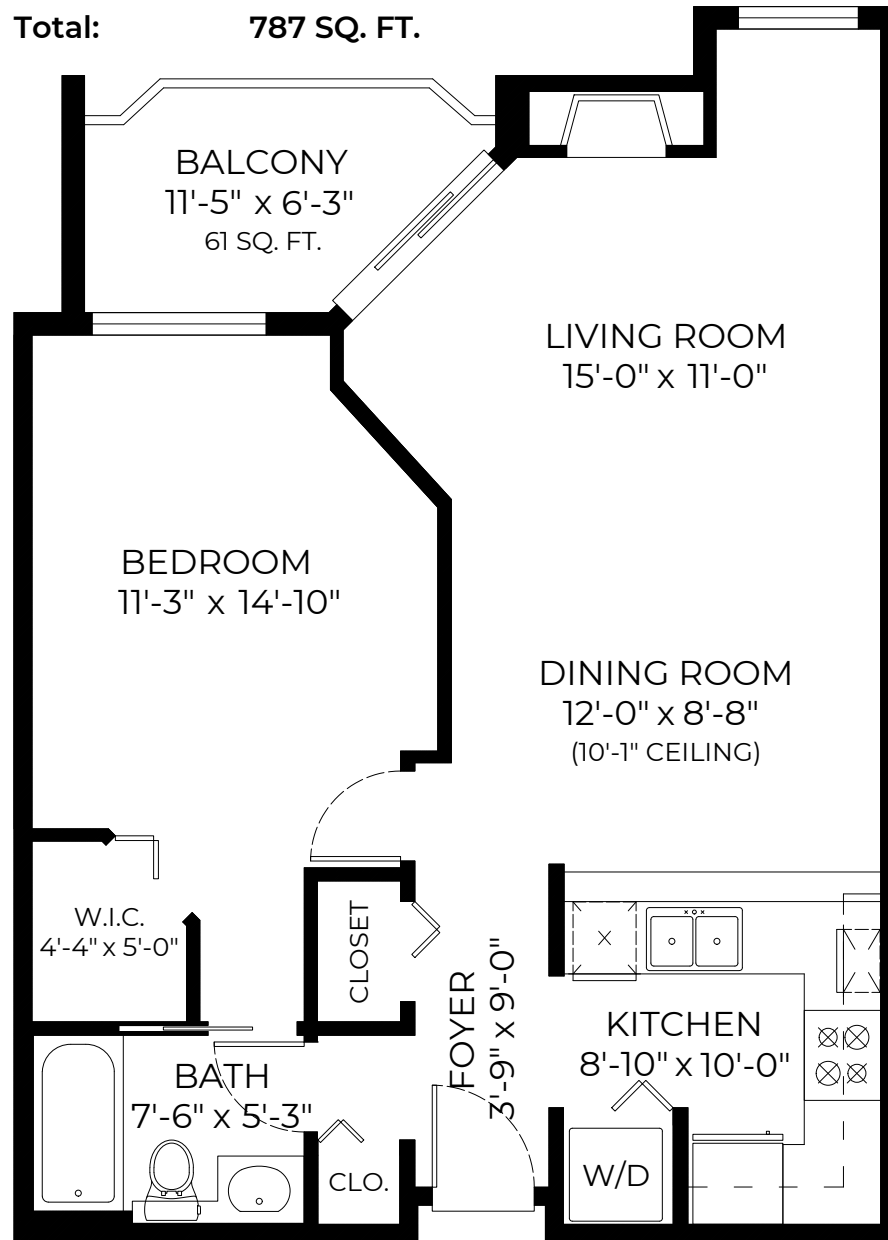


# #501-214 Eleventh Street, New Westminster, BC

Finished Area: 726 SQ. FT.

Balcony: 61 SQ. FT.

Total: 787 SQ. FT.



FLOOR PLAN  
Ceiling Height: 8'-0"



**Chris Brown** PREC\*  
778.881.0673  
chris@chrisbrownrealestate.ca  
www.chrisbrownrealestate.ca

**Jessica Lowes**  
778.288.1511  
jessica@kelsieandmorgan.com

FLOOR PLAN CREATED BY:  
SCANN3D.CA  
MAY 4, 2022 **stillhavn**  
REAL ESTATE SERVICES

\*PERSONAL REAL ESTATE CORPORATION.  
THE FLOOR PLAN ILLUSTRATION IS NOT SUITABLE  
FOR CONSTRUCTION/ARCHITECTURAL PURPOSES.  
MEASUREMENTS ARE APPROXIMATE AND MAY NOT BE TO SCALE. E&O INSURED.