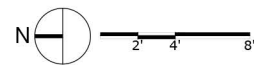
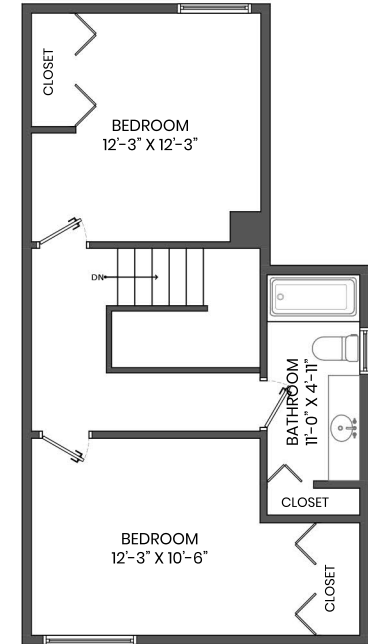
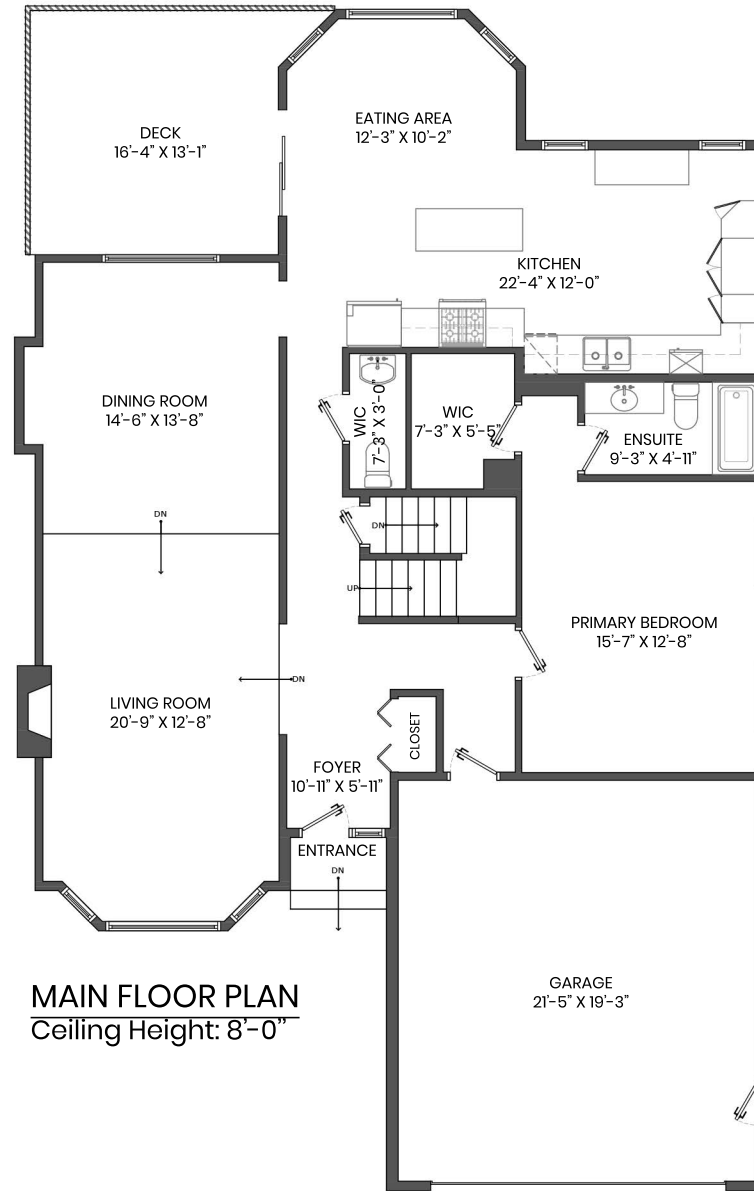
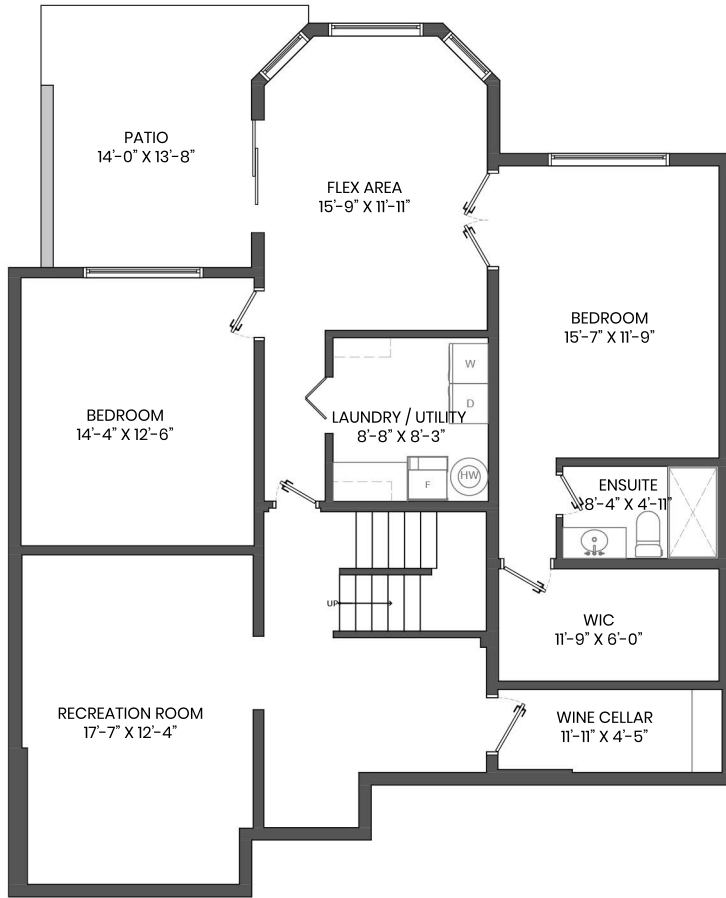


# 538 SAN REMO DRIVE, PORT MOODY, BC

LOWER FLOOR TOTAL: 1,407 SQ.FT.  
 MAIN FLOOR TOTAL: 1,470 SQ.FT.  
 UPPER FLOOR TOTAL: 562 SQ.FT.  
**TOTAL: 3,439 SQ.FT.**

GARAGE: 446 SQ.FT.  
 PATIO: 159 SQ.FT.  
 DECK: 178 SQ.FT.



## KELSIE & MORGAN

REAL ESTATE GROUP  
[www.KelsieAndMorgan.com](http://www.KelsieAndMorgan.com)



\*PERSONAL REAL ESTATE CORPORATION. THE FLOOR PLAN ILLUSTRATION IS NOT SUITABLE FOR CONSTRUCTION/ ARCHITECTURAL PURPOSES. MEASUREMENTS ARE APPROXIMATE AND MAY NOT BE TO SCALE. E&O INSURED. FLOOR PLAN DESIGNED BY ISHOT.CA ENTERPRISES INC. 604-368-7979 ISHOT.CA