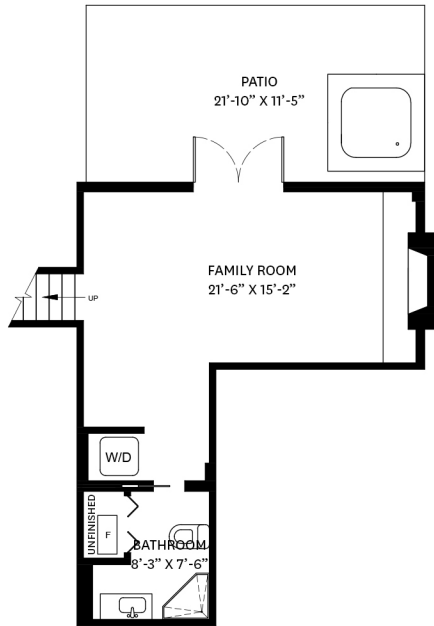
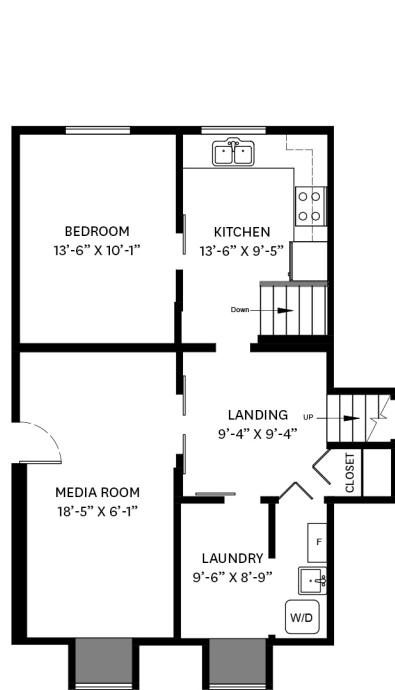


4686 TOURNEY ROAD, NORTH VANCOUVER, BC

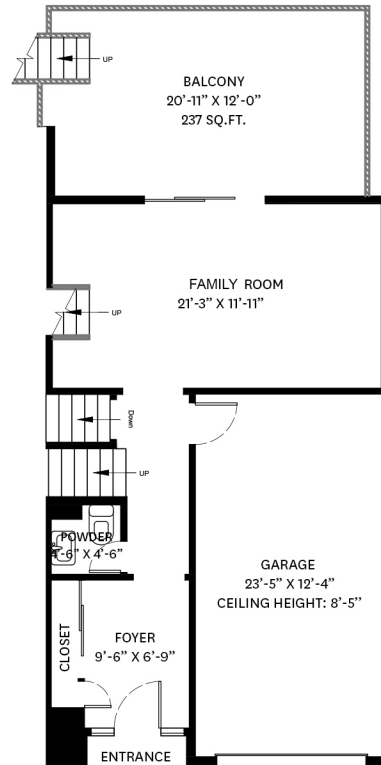
BOTTOM FLOOR TOTAL:	409 SQ.FT.	UNFINISHED TOTAL:	11 SQ. FT.
LOWER FLOOR TOTAL:	695 SQ.FT.	GRAND TOTAL:	3,150 SQ.FT.
MAIN FLOOR TOTAL:	507 SQ.FT.	GARAGE:	312 SQ. FT.
UPPER FLOOR TOTAL:	1,528 SQ.FT.	BALCONY:	297 SQ. FT.
TOTAL:	3,139 SQ.FT.	PATIO:	250 SQ. FT.



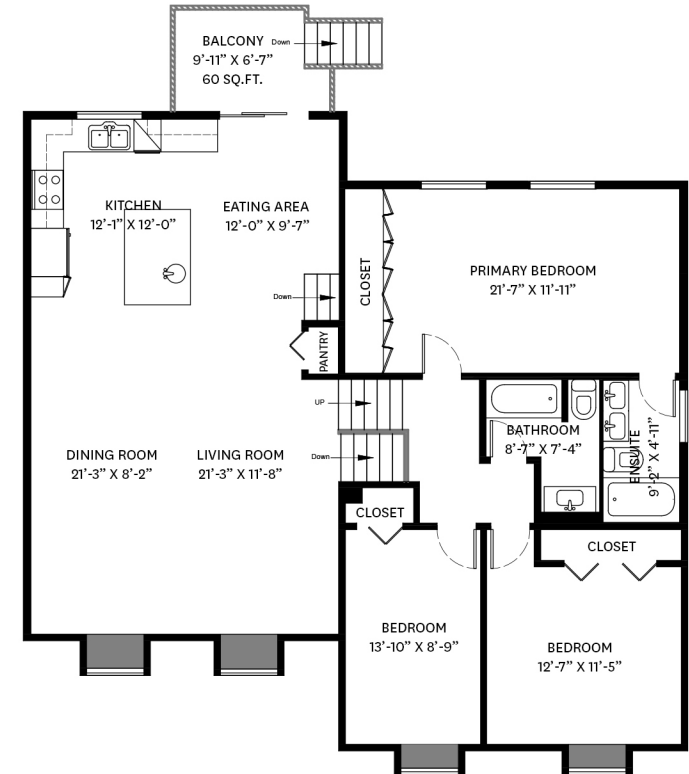
BOTTOM FLOOR PLAN
Ceiling Height: 7'-5"



LOWER FLOOR PLAN
Ceiling Height: 7'-4"



MAIN FLOOR PLAN
Ceiling Height: 8'-0"

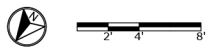


UPPER FLOOR PLAN
Ceiling Height: 7'-11"

KELSIE & MORGAN

REAL ESTATE GROUP

www.KelsieAndMorgan.com



floor plan designed by
ishot.ca Enterprises Inc.
604-368-7979
<http://ishot.ca>