

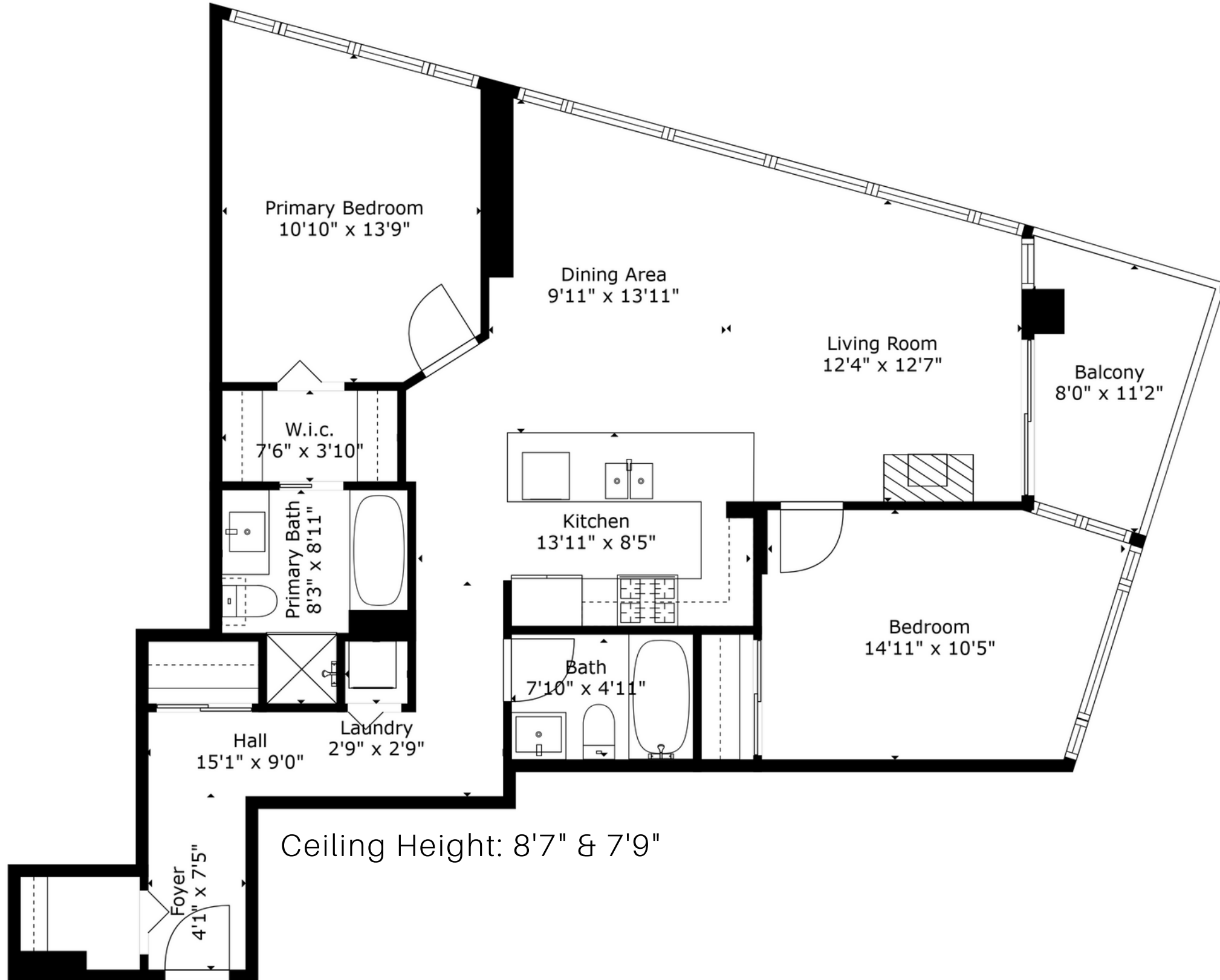
#1606, 110 Brew St, Port Moody, BC



Jessica Lowes

(778) 288-1511
 Jessicalowesrealestate@gmail.com

KELSIE & MORGAN
 REAL ESTATE GROUP



| | | Excluded areas | |
|--------------|-------------------|----------------|-----------------|
| Main | 1102 SQ.FT | Balcony | 76 SQ.FT |
| Total | 1102 SQ.FT | Total | 76 SQ.FT |



Bright-Media.ca

Measurements, features, and dimensions are an approximate, and are for illustrative purposes only. Measurements, features, and dimensions should not be used for any construction purposes. Actual measurements may vary. Total Square Footage may include low-height ceilings, unheated rooms, and room labels may not be accurate and is an approximate. The floor plan may not be to scale. E&O Insured