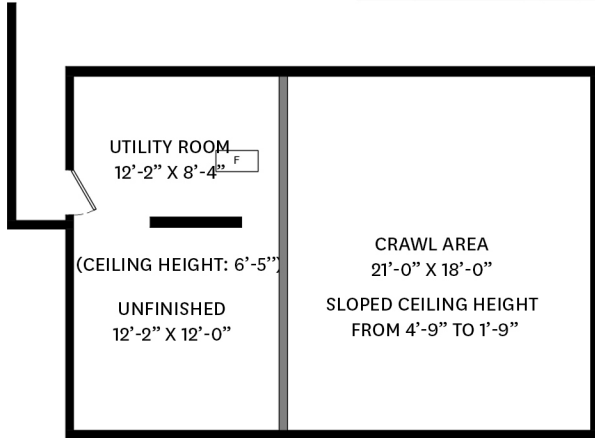
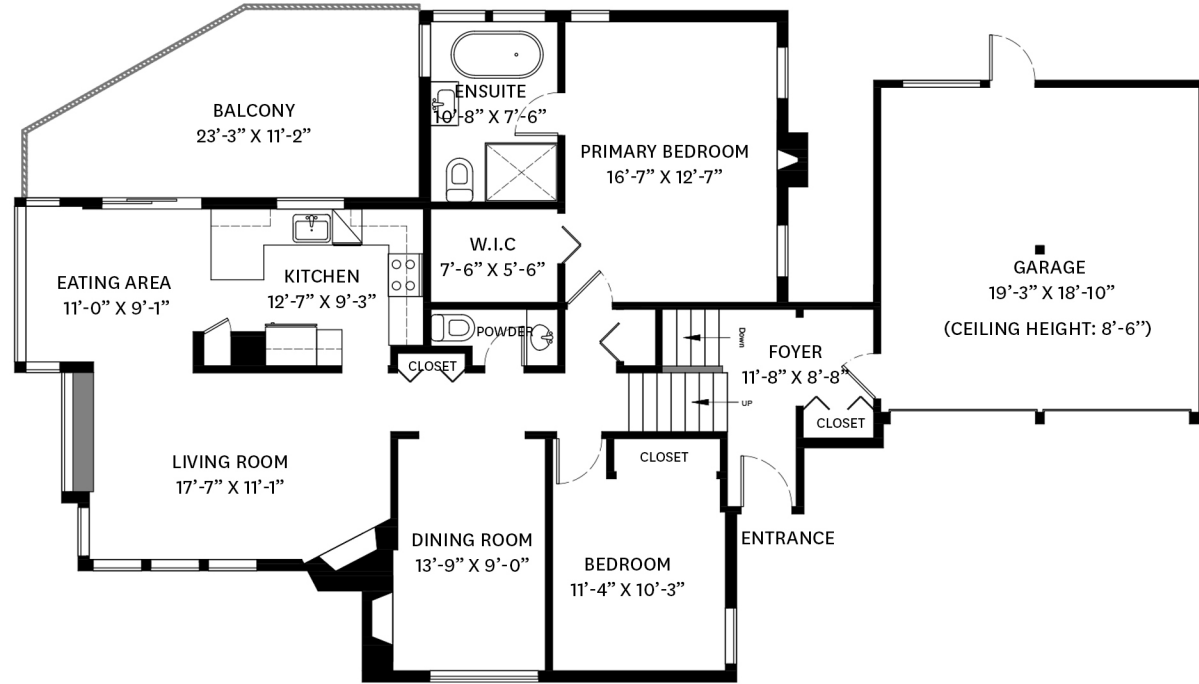
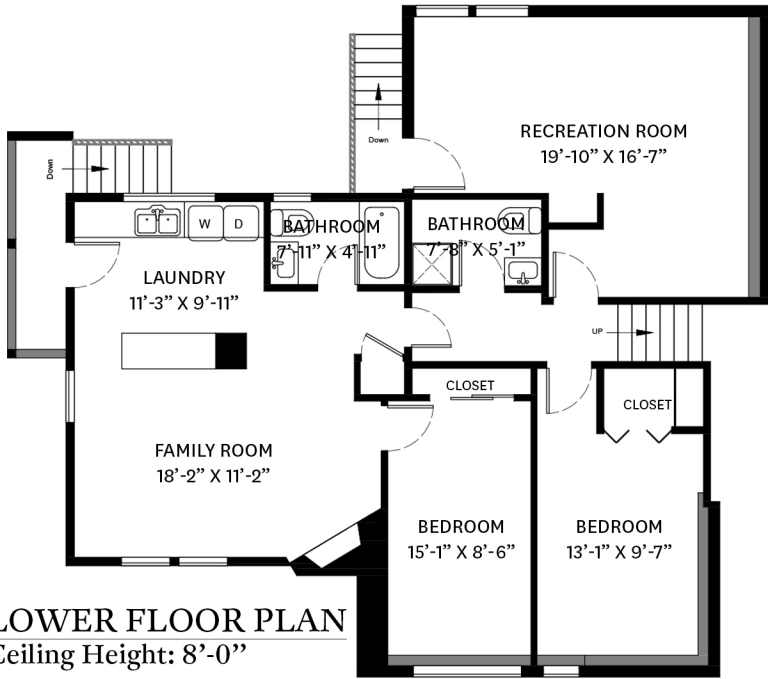


# 4225 CLIFFMONT ROAD, NORTH VANCOUVER, BC

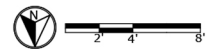
LOWER FLOOR TOTAL: 1,256 SQ.FT. CRAWL AREA: 699 SQ.FT.  
 MAIN FLOOR TOTAL: 1,404 SQ.FT. GARAGE: 404 SQ. FT.  
**TOTAL: 2,660 SQ.FT. BALCONY: 213 SQ. FT.**



## KELSIE & MORGAN

REAL ESTATE GROUP

[www.KelsieAndMorgan.com](http://www.KelsieAndMorgan.com)



floor plan designed by  
 ishot.ca Enterprises Inc.  
 604-368-7979  
<http://ishot.ca>