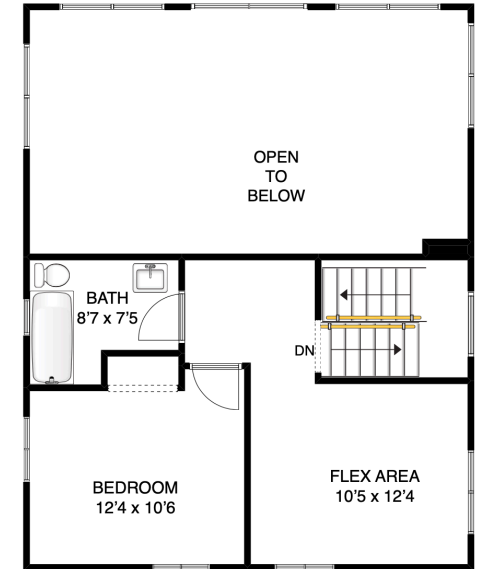


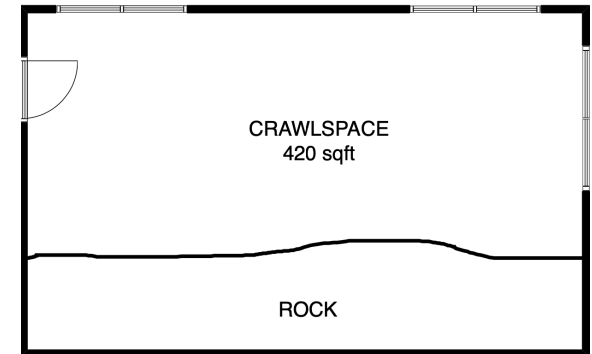
BASEMENT



MAIN FLOOR



UPPER FLOOR



CRAWLSPACE



FRANCES FROST
 PERSONAL REAL ESTATE CORPORATION
bowenlandrealestate.info
 604.947.9090
 #3 - 479 Bowen Trunk Rd.
 Bowen Island

ADDRESS

**843 HUMMINGBIRD LANE
 BOWEN ISLAND
 BC
 V0N 1G0**

AREA CALCULATION

MAIN FLOOR: **940 sq ft**
 UPPER FLOOR: **420 sq ft**
TOTAL FINISHED SQFT: 1360 sq ft
 UNFINISHED BASEMENT: 936 sq ft
 UNFINISHED CRAWLSPACE: 420 sq ft
TOTAL UNFINISHED SQFT: 1356 sqft
 MAIN FLOOR DECK: 400 sq ft
 LOWER COVERED DECK: 500 sq ft

NOTES

FLOOR PLAN MEASUREMENTS, DIMENSIONS, SQUARE FOOTAGE, EXISTING STRUCTURES & FEATURES ARE APPROXIMATIONS AND FOR ILLUSTRATIVE PURPOSES ONLY. WE MAKE NO GUARANTEE, EXPRESSED OR IMPLIED, AS TO THE ACCURACY AND COMPLETENESS OF THIS RENDERING.